



# S'NO PROBLEM

getting the Combustion & Humidification parts you need this Winter.

Purchase select  
Blower Assemblies, Ignition Controls, Gas Valves,  
Pressure Switches, Combustion Components,  
Defrost Controls, Flame Sensors  
and Humidification

and get a **FREE VEST**



Promo valid from January 6 to February 15



**SPEND \$350**  
on qualifying parts and get a  
**FREE VEST**



**SPEND \$1,500**  
on qualifying parts and get  
**15% OFF**  
PLUS A **FREE VEST**

CHOOSE FROM MORE THAN **1,000** BEST SELLING PARTS!



Blower  
Assemblies



Ignition  
Controls



Gas  
Valves



Pressure  
Switches



Combustion  
Components



Defrost  
Controls



Flame  
Sensors



Humidification


**BLOWER ASSEMBLY**

▶ 93W13	Lennox LB-94724AE Combustion Air Blower Assembly, 1/20 HP, 115 Volts, 60 Hz, 2-2.35 Amps, 3400 RPM
69M33	Lennox 69M3301 Combustion Air Blower, 1/12 HP, 208-230 Volts, 50/60 Hz, 0.32 Amps, 3200 RPM
19W04	Lennox LB-112090B Combustion Air Blower, 208-230 Volts, 60 Hz, 3300 RPM
69M32	Lennox 69M3201 Combustion Air Blower, 1/10 HP, 460 Volts, 0.14 Amps, 3200 RPM
24W95	Lennox LB-113219A Combustion Air Blower Replacement Kit, 1/30 HP, 115 Volts, 60 Hz, 1.65 Amps, 3000 RPM
44W30	Lennox 602107-02 Combustion Air Blower Assembly, 208-230 Volts, 60 Hz, 2700-3300 RPM
68K21	Lennox LB-65734G Combustion Air Blower Assembly, 115 Volts, 60 Hz, 2.5 Amps, 3400 RPM
12M55	Lennox LB-62533CC Blower Assembly, 1/25 HP, 208-230 Volts, 60 Hz, 3200 RPM
83M56	Fasco 7021-11634 Combustion Air Blower Assembly, 1/20 HP, 120 Volts, 60 Hz, 0.7 Amps, 3400 RPM
57M85	Lennox LB-94724E Combustion Air Blower Assembly, 1/20 HP, 115 Volts, 60 Hz, .8 Amps, 3300 RPM
74W55	Lennox LB-94724AA Combustion Air Blower Assembly, 1/40 HP, 120 Volts, 60 Hz, 1.18 Amps, 3250 RPM
81W45	Lennox LB-94724AC Combustion Air Blower Assembly, 1/20 HP, 115 Volts, 60 Hz, 0.3-0.6 Amps, 2800-3200 RPM
69M31	Lennox 69M3101 Combustion Air Blower, 1/12 HP, 208-230V, 0.28 Amps, 3200 RPM
16A66	LB-94724AL Combustion Air Blower Assembly
20J89	Lennox 65204100 Draft Inducer Blower Assembly, 1/25 HP, 115 Volts, 60 Hz, 1.3 Amps, 3000 RPM
14L67	Lennox LB-65734H Combustion Air Blower Assembly, 115 Volts, 60 Hz, 2.1 Amps, 3200 RPM
44W29	Lennox 602107-01 Combustion Air Blower Assembly, 208-230 Volts, 60 Hz, 2700-3300 RPM
85L49	Lennox LB-98714A Combustion Air Blower Assembly, 0.018 HP, 120 Volts, 60 Hz, 1.3 Amps, 3000 RPM
22F08	LB-112090E COMB AIR BLR-2SPD 230V W/XMFR
13U30	Lennox 104409-02 Combustion Air Blower, 1/16 HP, 460 Volts, 50-60 Hz, 0.17 Amps, 3450 RPM
47M55	Lennox LB-94724D Combustion Air Blower Assembly, 1/20 HP, 115 Volts, 60 Hz, 1.8 Amps, 3400 RPM
48L96	Lennox LB-65734J Combustion Air Blower Assembly, 120 Volts, 60 Hz, 2.5 Amps, 3400 RPM
74K77	Lennox 42250-001 Draft Inducer Blower, 1/30 HP, 208-230 Volts, 60 Hz, 0.6 Amps, 3000 RPM
13U29	Lennox 104409-01 Combustion Air Blower, 1/18 HP, 208-230 Volts, 50-60 Hz, 0.35 Amps, 3450 RPM
80M52	Lennox 80M5201 Draft Inducer Blower, 115 Volt,
99K57	Lennox 99K5701 Combustion Air Blower, 1/10 HP, 208-230 Volts, 60 Hz, 3200 RPM


**BLOWER ASSEMBLY (Continued)**

43W85	Lennox LB-94724M Combustion Air Blower, 1/30 HP, 115 Volts, 60 Hz, 2 Amps, 3000 RPM
23G81	Lennox 23G8101 Combustion Air Blower, 1/12 HP, 208-230 Volts, 60 Hz, 3200 RPM
13Y15	Lennox LB-112090C Combustion Air Blower, 230 Volts, 3450 RPM
27K61	Lennox 65256500 Draft Inducer Blower Assembly, 0.017 HP, 120 Volts, 60 Hz, 3000 RPM
43K30	Lennox 65238200 Draft Inducer Blower Assembly, 0.017 HP, 120 Volts, 60 Hz, 3000 RPM
44J07	Lennox LB-65734D Combustion Air Blower Assembly
73W09	Lennox LB-94724T Combustion Air Blower, 1/40 HP, 120 Volts, 60 Hz, 2200-3000 RPM
43J57	Lennox LB-65734C Combustion Air Blower Assembly
28G66	Lennox 28G6601 Draft Inducer Blower, 1/12 HP, 208-230 Volts, 60 Hz, 3200 RPM
67M68	Lennox LB-107228T Combustion Air Blower Replacement Kit, 1/30 HP, 115 Volts, 60 Hz, 3200 RPM
15F58	LB-112090D COMB AIR BLR - 1 SPD 460V
67M54	Lennox LB-107228C Combustion Air Blower Replacement Kit, 0.017 HP, 120 Volts, 60 Hz, 0.8 Amps, 3000 RPM
67M69	Lennox LB-107228W Combustion Air Blower Replacement Kit, 1/30 HP, 115 Volts, 60 Hz, 3200 RPM
98G42	Lennox 98G4201 Combustion Air Blower, 1/10 HP, 208-230 Volts, 60 Hz, 3300 RPM
58W01	45037-001 Draft Inducer Blower Assembly, 1/30 HP, 115 Volts, 60 Hz, 1.8 Amps, 3400 RPM
88J38	Lennox 65252500 Draft Inducer Blower, 1/15 HP, 115 Volts, 60 Hz
43J58	Lennox LB-65734E Combustion Air Blower Assembly, 1/30 HP, 115 Volts, 60 Hz, 3200 RPM
70L60	Lennox 702111220S Draft Inducer Blower
22G55	LB-94724AP MOTOR-COMB BLO 2 STAGE
67M64	Lennox LB-107228N Combustion Air Blower Replacement Kit, 1/70 HP, 120 Volts, 60 Hz, 1.1 Amps, 3000 RPM
67M53	Lennox LB-107228B Combustion Air Blower Replacement Kit, 0.017 HP, 120 Volts, 60 Hz, 0.73 Amps, 3000 RPM
12K98	Lennox 104070-01 Draft Inducer Blower, 208-230V, 60 Hz, 3000 RPM
68M33	Lennox LB-107336A Blower Assembly (Unpainted)
63L83	Lennox LB-65734K Combustion Air Blower Assembly, 115 Volts, 60 Hz, 3 Amps, 3200 RPM
67M55	Lennox LB-107228D Combustion Air Blower Replacement Kit, 0.017 HP, 120 Volts, 60 Hz, 0.8 Amps, 3000 RPM
20M31	CAI Replacement Kit (Combustion Air Inducer), 105035-03, 615543-04
75M78	Fasco 75M7801 Combustion Air Blower, 1/10 HP, 208-230 Volts, 60 Hz, 0.9 Amps, 3200 RPM
50J07	Lennox LB-65734F Combustion Air Blower Assembly
16X30	Combustion Air Blower, 2 Speed
70W38	Lennox LB-94724P Combustion Air Blower Assembly, 1/80 HP, 120 Volts, 60 Hz, 2200-3300 RPM
92L14	Excel Comfort Systems 702110948 Draft Inducer Blower Assembly, 115 Volts, 60 Hz, 1.90 Amps, 3225 RPM
19J04	Lennox 65237500 Draft Inducer Blower, 1/65 HP, 120 Volts, 60 Hz, 3000 RPM
99C33	Fasco 7021-5039 Combustion Blower Assembly, 1/50 HP, 230 Volts, 60 Hz, 0.45 Amps, 3000 RPM
80W97	Lennox 101431-01 Draft Inducer Blower, 1/30 HP, 115 Volts, 60 Hz, 1.4 Amps, 3000 RPM
19B14	105857-01 BLOWER-INDUCED DRAFT
25B17	LB-94724AR COMB BLWER REPAIR KIT - EL297
22G64	615543-05 CAI REPAIR KIT (105035-05)
67M61	Lennox LB-107228K Combustion Air Blower Replacement Kit, 0.015 HP, 220-240 Volts, 50 Hz, 0.3 Amps, 2500 RPM
23A33	615543-08 CAI COMB-MTR KIT ECM 1-STG
16J35	CAI Repair Kit
68M35	Lennox LB-107337A Blower Assembly (Unpainted)
85W66	Lennox 608261-01 Blower Relay Kit
56W68	44431-001 Draft Inducer Blower Assembly, 1/30 HP, 115 Volts, 60 Hz, 1.4 Amps, 3000 RPM
20A64	106566-01 BLOWER-INDUCED DRAFT

**93W13**


# Combustion Air Blower Assembly

- 1/20 HP, 115 Volts, 60 Hz, 2-2.35 Amps, 3400 RPM
- Includes: Inducer Assembly, Wiring Harness, 4 Screws, Inducer Gasket, 9" silicone tubing, Installation Instructions







## BLOWER ASSEMBLY (Continued)

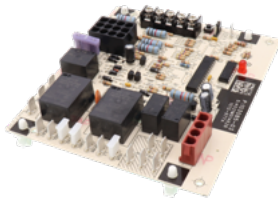
12W47	Jakel Incorporated 20556201 Furnace Induced Draft Blower
52M60	Excel Comfort Systems 20467901 Draft Inducer Blower Assembly, 1/25 HP, 230 Volts, 60 Hz, 0.75 Amps, 3060 RPM
19B13	106021-01 BLOWER-INDUCED DRAFT
93K98	Lennox LB-91396C Combustion Air Blower
67M67	Lennox LB-107228S Combustion Air Blower Replacement Kit, 0.017 HP, 208-230 Volts, 60 Hz, 0.4 Amps, 3000 RPM
23A35	615543-10 CAI COMB-MTR KIT PSC 1-STG
24W74	Lennox LB-110395E Blower Assembly (Unpainted), 5 HP
19A58	LB-94724AM BLOWER-INDUCED DRAFT
43J56	Lennox LB-65734B Combustion Air Blower Assembly, 1/30 HP, 115 Volts, 60 Hz, 3200 RPM
20J34	LB-94724AN BLOWER-INDUCED DRAFT
10H18	OEM Corporation 103672-01 Blower Shaft, 0.62" x 17.625"
80C93	Jakel Incorporated 80C9301 Blower, 120 Volts, 60 Hz, 0.51 Amps, 3000 RPM
23A34	615543-09 CAI COMB-MTR KIT ECM 2-STG
25B16	615543-11 COMB BLWR KIT - EL297UH135
67M56	Lennox LB-107228E Combustion Air Blower (International Only), 0.03-0.037 HP, 240 Volts, 50-60 Hz, 0.52-0.6 Amps, 2500-3000 RPM

19V36



## SureLight® Ignition Control

This kit contains all components required to replace any existing single stage SureLight® ignition control in a Lennox gas furnace.



## IGNITION CONTROLS

▶ 19V36	LB-109531B SURELIGHT
▶ 49W66	UT Electronic Controls Direct Spark Ignition Control, 24 Volts
22K52	Allied 607308-23, Integrated Control Replacement Kit For use in A80US/DS2V and A96US2V/DS2V Furnaces
RI02614-01	Lennox 102614-01, Pressure Switch, Actuates at 0.40" W.C.; Resets at 0.55" W.C.
21W14	Lennox 101029-01 Integrated Ignition Control Board
15T94	Lennox 607308-17 Ignition Control (103130-05)
63W27	Honeywell S9230F1014/U Ignition Control, 24 Volt, 60 Hz
Y9894	50A66-743 Integrated Furnace Control
94W83	UT Electronic Controls 1012-977A-I Merit Series Ignition Control Board
70W16	Kyocera LB-112237B Ignitor Replacement Assembly
19J95	607308-19 Ignition Control Kit
81W03	UT Electronic Controls 100973-02 Ignition Control
19M54	UT Electronic Controls 065310400 Ignition Control Board Conversion Kit
19W94	UT Electronic Controls Ignition Control Conversion Kit
23L53	UT Electronic Controls 1097-504-I Furnace Spark Ignition Control Board
80K12	Kidde-Fenwal 35-605903-223-OG-IP 24-Volt Microprocessor Based Direct Spark Ignition Control
30W33	Honeywell S8670K3000/B 2 Rod Intermittent Pilot Control, 24 Volts
17W82	UT Electronic Controls 1173-1 Ignition Control Replacement Kit
Y4749	Baso BGN891-2C Direct Spark Ignition Control Replacement for JCI G891 Pulse Ignition Control



49W66

## Direct Spark Ignition Control



- UTEC Model: 1016-500
- Pre-Purge: 30 sec nom
- Trial for Ignition: 8 sec
- Ignition Trials: 3 with 5 min recycle
- Operating Voltage: 24V 50/60 hz
- Operating Current: 250 mA max



## IGNITION CONTROLS (Continued)

63W26	Honeywell S9220E1018/U 2-Stage PSC Integrated Furnace Ignition Control
23C48	607436-05 IGNITION CONTROL KIT
12X08	Honeywell 614148-01 Ignition Control Kit
19W61	Kyocera LB-112237A Ignitor Replacement Assembly
12J99	Lennox OEM Replacement Furnace Control Board, 6" x 6" x 6"
98W20	607308-08 Kit-Ignition Control
12X09	614148-02 KIT - IGNITION CONTROL
21L14	106855-01 M4 UNIT CONTROLLER KIT
80M27	HONEYWELL Lennox Armstrong Ducane Control Circuit Board
10J58	24 VAC Microprocessor Based Direct Spark Ignition Control with Combustion Blower Relay
56M61	Lennox IGN Control Board
56W19	R47582-001 CONTROL-IGNITION
96W66	102186-02 CONTROL-IGNITION
22K51	607308-22 KIT-IGNITION CONTROL
19V33	607308-20 KIT-IGNITION CONTROL
14Y53	607308-14 KIT-IGNITION CONTROL
68M28	LB-107357 IGN CONTROL KIT
10W56	100253-01 CONTROL - IGN
84W58	607308-04 Kit-Ignition Control
74W03	103098-01 CONTROL-IGNITION 1Stg Elite
15K17	Ignitor
21J99	105802-02 BOARD-CONTROL, DSI
Y0655	Honeywell S9200U1000/U Universal Hot Surface Ignition Integrated Furnace Control
17Y92	Ignition Control Kit
16A06	Ignition Control Kit
10X87	103976-01 C3 CONTROLLER
15T95	Ignition Control Kit
Y3367	White-Rodgers 50M56U-843 Universal Single Stage Integrated HSI Furnace Control Kit, 25VAC, 50/60 Hz
22K54	607308-25 KIT-IGNITION CONTROL
87W62	103324-04 CONTROL-SCR 40A 3PH
16A07	Ignition Control Kit
Y4151	Universal Integrated 3-Speed (PSC) HSI Furnace Control Kit Two Stage 24 VAC 60 Hz
10U92	103132-03 CONTROL-IGN CONT-TORQUE-2STAGE
21N34	Honeywell S8910U3000/U Universal Hot Surface Ignition Module
Y8726	White-Rodgers 50M56U-801 Integrated Furnace Control, 120V HSI Ignition, Single Stage, 2 or 3 Speed PSC Blower Motor
17H03	Robertshaw 780-001 Universal Ignition Control, Non-Lockout

**33M70**


# Replacement Combustion Air Blower Kit

INCLUDES:

- Complete ventor motor assembly 25M5501 (Fasco # 7021 11231)
- Transition gasket LB-61781D
- 3 x Screws P-8-10660



## IGNITION CONTROLS (Continued)

87W60	103324-02 CONTROL-SCR 30A 3PH
40W08	101018-02 Control-Ignition
21L15	106856-01 C4 CONTROLLER REPAIR KIT
X3246	White-Rodgers 50E47-843 Universal Non-Integrated Hot Surface Ignition (HSI) Control, 25 VAC Nominal
24Z39	607308-26 KIT-IGNITION CONTROL
92W88	607308-09 Kit-Ignition Control
97N56	Honeywell SV9502H2522/U Intermittent Hot Surface Pilot SmartValve, Slow Opening, 1/2" x 1/2", 3.2" WC
Y9962	White Rodgers Universal Single Stage Furnace Control Kit
17H18	White-Rodgers 50T35-743 Integrated Furnace Control
30W34	2 Rod Intermittent Pilot Control,90 S./cont.
16C81	607436-03 Ignition Control Kit



## COMBUSTION COMPONENTS (Continued)

44W52	102107-01 Collector Box
17F18	619598-19 Collector Box, Found in SLP98 Series
71W26	102504-01 Flue-Exhaust
74M19	LB-66725 PLATE - CORBEL
43L21	UH-65204002 TURBULATOR ASSY
17F26	619598-26 Collector Box, Found in EL296 Series
17F57	619598-52 Collector Box, Found in ML195 Series
17F60	619598-55 Collector Box, Found in ML195 Series
28W44	LB-108343B FLUE ASSY (Exhaust Tee)
17F33	619598-32 Collector Box, Found in EL296 Series
17F54	619598-49 Collector Box, Found in ML195 Series
22J95	615543-06 CAI REPLACEMENT (105035-04)
17F43	619598-41 Collector Box, Found in ML195 Series
72W31	102492-03 GASKET-VEST PANEL
16C63	Adapter Plate Kit
17F09	619598-16 Collector Box, Found in ML195 Series
17F21	619598-21 Collector Box, Found in EL296 Series
32M65	32M6501 COLLAR - FLUE (10.148)
50M18	LB-101508A Ring/Cap/Plug Repl Kit
17F15	17F1501PR GASKET REP
17F45	619598-43 Collector Box, Found in EL296 Series
19W95	LB-108344B FLUE ASSY
44W53	102107-02 Collector Box
17F34	619598-33 Collector Box, Found in ML195 Series
16U10	619598-10 KIT -COLLECTOR BOX 105671-01
84M22	LB-91798 BURNER BOX
93M28	LB-74816A FLUE ASSY
21U01	616086-20 ULN Air Orifice 0.787
95W66	609313-07 REPL COLD END COLL BOX KIT
11M63	LB-66721 BOX-BURNER
17F05	619598-12 Collector Box, Found in ML195 Series
92W30	609313-13 REPL COLD END COLL BOX KIT
19V58	619598-57 KIT -COLLECTOR BOX 105671-46
92W29	609313-12 REPL COLD END COLL BOX KIT
95W63	609313-04 REPL COLD END COLL BOX KIT
17H41	Heat Exchanger ML193E/A93E/92GE UH090
44W58	102109-05 Collector Box
17F23	619598-23 Collector Box, Found in EL296 Series
17F44	619598-42 Collector Box, Found in SLP98 Series, Found in ML195 Series
17F41	619598-39 Collector Box, Found in ML195 Series
44W61	102108-01 Collector Box
21U03	616086-22 ULN Air Orifice - 1.085"
19X32	616086-04 ULN AIR ORIFICE 1.219" DIA
93L86	LB-99004C COLLECTOR BOX
17F22	619598-22 Collector Box, Found in SLP98 Series
83W39	103303-01 Fuel Pump w/Solenoid
17F17	619598-18 Collector Box, Found in SLP98 Series
15P57	Heat Shield
84M94	LB-108343C FLUE ASSY (Exhaust Tee)
17F28	619598-28 Collector Box, Found in ML195 Series
81W46	LB-101510C GASKET- COMBUSTION AIR
17F24	619598-24 Collector Box, Found in EL296 Series
93M29	LB-74816B FLUE ASSY
15P54	Gas/Air Plenum
44W60	102110-02 Collector Box
71W28	102515-01 GASKET-COLL BOX (70/90)
92W27	609313-10 REPL COLD END COLL BOX KIT
17F29	619598-29 Collector Box, Found in ML195 Series
21U25	616086-13 ULN Air Orifice - 0.980"



## COMBUSTION COMPONENTS

33M70	Fasco LB-101225A Replacement Combustion Air Blower Kit
48W32	Lennox 602864-01 Turbulator
29L43	LB-89287D BOX-COLL
98M88	R100155-01 BLOWER - COMB (SINGLE)
10W59	R100156-01 BLOWER - COMB (2 STAGE)
15P73	Heat Shield
21W66	LB-106197 Gasket-Induced Draft
17F50	619598-46 Collector Box, Found in EL296 Series
15P66	Heat Shield
59L20	LB-91846 GASKET-COLLECTOR BOX
17H92	617368-01 Flue Coupling
17F38	619598-36 Collector Box, Found in EL296 Series
17F52	619598-48 Collector Box, Found in SLP98 Series, Found in ML195 Series
25W89	LB-109746 CAP-BURNER
17F56	619598-51 Collector Box, Found in EL296 Series
16U11	619598-11 KIT -COLLECTOR BOX 105671-03
17H53	Heat Exchanger ML193E/A93E/92GE UH030
95W64	609313-05 REPL COLD END COLL BOX KIT
17F55	619598-50 Collector Box, Found in EL296 Series
15P63	Heat Shield
17F08	619598-15 Collector Box, Found in EL296 Series
17F07	619598-14 Collector Box, Found in SLP98 Series
17F10	619598-17 Collector Box, Found in ML195 Series
17F19	619598-20 Collector Box, Found in ML195 Series


**COMBUSTION COMPONENTS**

17F42	619598-40	Collector Box, Found in EL296 Series
19X39	616086-19	ULN AIR ORIFICE
83M82	LB-108344C	FLUE ASSY
10M82		Two Stage Natural to LP Gas Conversion Kit For VR820xQ VR830xQ VR820xN VR830xN
99M77	LB-101510B	GASKET- COMBUSTION AIR
44W57	102109-04	Collector Box
60J55	65238400	GASKET
95W67	609313-08	REPL COLD END COLL BOX KIT
21U02	616086-21	ULN Air Orifice 1.010"
95W60	609313-01	REPL COLD END COLL BOX KIT
17F36	619598-34	Collector Box, Found in ML195 Series
65W28	102590-01	Collector Box
15P51		Gas/Air Plenum
17F51	619598-47	Collector Box, Found in ML195 Series
71W27	614169-01	AIR INLET GASKET ASSY
35K71	R41924-002	COMB CHAMBER (WET PACK)
38K29	LB-89287A	BOX-COLL
19X31	616086-03	ULN AIR ORIFICE 1.125" DIA
65W29	102590-02	Collector Box
20U95		Burner Box Top, 620956-01
12L02	611342-01	BOX-COLLECTOR
19X36	616086-14	ULN AIR ORIFICE 0.995" DIA
98W23	103362-01	SCREEN - 1 PACK OF 10 SCREENS
98L87	LB-99004E	COLLECTOR BOX
71W36	102809-02	Hose Drain (UH)
21U23	616086-01	ULN Air Orifice 0.812"
52J98		Gasket for COMB Air Assembly
45K27	LB-66251	GASKET-FLUE
44W55	102109-02	Collector Box
15P33		Premix Burner
19X37	616086-15	ULN AIR ORIFICE 0.937" DIA
15P44		Gas/Air Plenum
32M68	32M6801	COLLAR - FLUE (6.648)
27M71	LB-99226C	MANIFOLD/ORIFICE KIT
58W13	R42381-003	Header Box Gasket
44W56	102109-03	Collector Box
16U14		Cold End Header Box Kit
21U26	616086-16	ULN Air Orifice 0.800
16A58		Sensor/ Igniter Gasket
19V61	619598-60	KIT-COLLECTOR BOX 105672-18
45J63	UH-65214500	BOX-FLUE
65W30	102591-01	Collector Box
10F95	610261-15	Box-Collector (103370-10)
15V87		Burner/ Plenum Gasket, Graphite
19V60	619598-59	KIT -COLLECTOR BOX 105672-17
17F30	619598-30	Collector Box, Found in ML195 Series
27M72	LB-99226D	MANIFOLD/ORIFICE KIT
17F58	619598-53	Collector Box, Found in ML195 Series
84K81	ROBERT SHAW41358-007	COVER-FLUE
81L93	LB-94571	GASKET
19X35	616086-08	ULN AIR ORIFICE 0.969" DIA
15V84		Burner/ CC Gasket, Graphite
59M27	R20535701	COLD HEADER-COLLECTOR BOX
28J96	LB-69815	GASKET
95W65	609313-06	REPL COLD END COLL BOX KIT
22J96	616086-23	ORIFICE - AIR
24G44	616086-30	AIR ORIFICE 1.030
43J60	LB-69706E (UH-65214300)	BOX-FLUE


**COMBUSTION COMPONENTS (Continued)**

20U04	619598-56	Collector Box Kit KIT 105671-48
23A27	616086-25	AIR ORIFICE .745
71W35	102809-01	Hose Drain (UH)
16U01	619598-01	KIT -COLLECTOR BOX 105672-01
16U02	619598-02	KIT -COLLECTOR BOX 105672-02
23A31	616086-28	AIR ORIFICE .880
21U24	616086-12	ULN Air Orifice 1.105"
23A32	616086-29	AIR ORIFICE 1.160
15V48		Burner/ Plenum Gasket, Graphite
83W33	103312-01	Drawer Assembly
82L00	LB-91504	BOX-COLLECTOR
21D40		Gas Air Plenum Kit, 622484-01
17F31	619598-31	Collector Box, Found in ML195 Series
51M91		4" Diameter Blower Gasket Graphite
19X30	616086-02	ULN AIR ORIFICE 1.000" DIA
84L02	LB-91506	BOX-COLLECTOR
17F40	619598-38	Collector Box, Found in ML195 Series
46K90		Draft Inducer Gasket
97L12	97L1201	CONNECTOR" GAS FLEX LINE 34"
15V83		Burner/ CC Gasket, Graphite
51W26	LB-90853	PLATE - CORBEL
17F27	619598-27	Collector Box, Found in EL296 Series
72W30	102492-02	GASKET-VEST PANEL
70W15	605733-01	Kit-NOx Insert
19X38	616086-18	ULN AIR ORIFICE 0.906" DIA
29K12		Plug - Flue 2
15P34		Premix Burner
57W95		Induced Draft Blower Motor Gasket
93M30	LB-74816C	FLUE ASSY
23A28	616086-26	AIR ORIFICE 1.047
21J94		BOOT-FLUE TRAP
24L19	105157-04	COUPLING AIR INTAKE ULN-90
15V47		Burner/ CC Gasket, Graphite
84K82	ROBERT SHAW41358-008	COVER-FLUE
10Z62	610261-25	Box-Collector (103370-25)
22B33	105157-02	COUP AIR-INTAKE ULN-90 LONG
97M72	LB-108273	COVER-CONTROL BOX (MEDIUM)
61M30	LB-100684C	BURNER BOX - COVER
72W32	102492-04	GASKET-VEST PANEL
81L71	LB-94557	BRACKET-IGNITOR
11C83		CoreMax High Flow Processing Valve Pressure Rating 700
16U06	619598-06	KIT -COLLECTOR BOX 105672-09
95W92	610261-08	Box-Collector (103370-08)
19V59	619598-58	KIT -COLLECTOR BOX 105671-47
19X34	616086-07	ULN AIR ORIFICE 1.094" DIA
17F25	619598-25	Collector Box, Found in ML195 Series
10Z53	610261-16	Box-Collector (103370-16)
13U65	610261-47	BOX-COLLECTOR (103370-61)
83L24		GASKET-COLD HEADER BOX
10Z67	610261-30	Box-Collector (103370-30)
28G61		Natural to Regulated L.P. Gas Conversion Kit For Use On Single Stage 36C D E F G H J Gas Valves
25W72	100742-02	GASKET-ID DRAFT
22B32	105157-01	COUP AIR-INTAKE ULN-90 SHORT
17F59	619598-54	Collector Box, Found in ML195 Series
28J97	65203800	LB-69816 GASKET
49K67	49K6701	GASKET - PVC (14 IN.)
61M21	LB-100712D	BURNER BOX - BOTTOM
95W95	610261-11	Box-Collector (103370-11)


**COMBUSTION COMPONENTS (Continued)**

51M92	6" Diameter Blower Gasket with 316 Foil Insert
95W85	610261-01 BOX-COLLECTOR (103370-01)
13U06	Right Burner Bracket
11U58	610261-33 BOX-COLLECTOR (103370-47)
19W96	LB-108344D FLUE ASSY
69W51	102710-01GASKET INDUCER MT PLATE
59W72	R45180-003 GASKET-BURNER BOX COVER
31L98	ADAPTOR-FLUE
28J94	65259500 GASKET
61M25	LB-100667C BURNER BOX - TOP
54J12	LB-69959 DIVERTER
82M50	LB-102127 GASKET-COLLECTOR
70L61	20097501 GASKET
59M28	R20535702 COLD HEADER-COLLECTOR BOX
11X25	611341-01 BURNER BOX CORBEL BRACKET
15V94	Burner Box Vest Panel Gasket
23A29	616086-27 AIR ORIFICE 1.330
61M19	LB-100712B BURNER BOX - BOTTOM
91H56	65248600 GASKET
25B92	616086-31 ULN Air Orifice 0.730
54M61	LB-100674A AIR INTAKE COUPLING ASSY
12K80	104077-01 COLL BOX GASKET 3-5 BURNER
25A93	619598-63 COLLECT BOX (CEHB) EL297-E-100
19X33	616086-06 ULN AIR ORIFICE 1.250" DIA
64G28	LB-55093D GASKET
18K01	Air Intake And Induced Draft Combustion Blower Gasket Kit
72W33	102492-05 GASKET-VEST PANEL
95M47	100520-01 Fitting - PressureTap
44W13	LB-110901 COVER-CONTROL BOX
98W72	102809-03 Hose Drain
49K66	49K6601 GASKET - PVC (19 IN.)
22J56	616086-17 ULN AIR ORIFICE 1.062 IN DIA
13U07	Left Burner Bracket
50W58	R20539502 Gasket Kit Cold Box/Inducer
27K62	65256600 GASKET-FLUE BOX
46J16	LB-69902 GASKET
47K39	R40424-001 GASKET-FLUE
22J97	616086-24 ORIFICE - AIR
35K56	Flue Pipe Gasket
15V86	Burner/ Plenum Gasket, Graphite
25W73	100742-03 GASKET-FLUE
71W29	102515-02 GASKET-COLL BOX (110)
16V71	Flue Exhaust Tee
50J79	LB-65616 GASKET
17J66	65232800 GASKET-FLUE
71W47	102865-02 Hose Drain (DF)
71L49	20069403 PLATE-ADAPTER
38L96	LB-90890 GASKET
72W51	102859-01 Collar-Air Inlet (DF)
33H06	R37818B001 Gasket (Insulation-Mtg Plate)
18G94	Transition Flue 5"
58W14	R42381-004 Header Box Gasket
58W12	R42381-002 Header Box Gasket
87W22	103355-01 Gasket-CEHB
82M59	LB-108371 GASKET-COMB AIR MTR
84L03	LB-91507 BOX-COLLECTOR
13U74	603688-01 BOX-BURNER SIDE-NO MANIFOLD
15V93	Burner Box Vest Panel Gasket
17J67	65232900 GASKET-FLUE


**COMBUSTION COMPONENTS (Continued)**

48L28	LB-90889 GASKET-COLLECTOR BOX
61M10	LB-96425 GASKET-BURNER BOX/VEST
15V91	Collector Box Gasket
81W56	102996-03 Bracket-Burner Mtg-R
71W46	102865-01 Hose Drain (DF)
81L94	LB-94572 GASKET
47K66	Heat Exchanger Gasket
20U84	104981-05 GASKET-BURNER BOX (MED HT)
95M45	100275-01 Cap-Seal
69W46	102697-02 GASKET-COLL BOX
59W70	R45180-001 GASKET-BURNER BOX COVER
81L95	LB-94573 GASKET
61M12	LB-96427 GASKET-BURNER BOX/VEST
95M46	100519-01 Fitting - PressureTap
47K65	Heat Exchanger Gasket
12K82	104077-02 GASKET FLUE COVER 6-7 BURNER
61M09	LB-96424 GASKET-BURNER BOX/VEST
13K25	100743-01 PRESSURE FITTING
14W70	104396-01 GASKET COLLECTOR
13U21	610261-41 BOX-COLLECTOR (103370-68)
16U08	619598-08 KIT -COLLECTOR BOX 105672-13
25B23	625350-01 AIR-INTAKE ULN-80 LOW PROFILE
15V95	Burner Box Vest Panel Gasket
16U17	Cold End Header Box Kit
21D43	Gas Air Plenum Kit, 622484-02
15P55	Gas/Air Elbow
21A46	Heat Shield Replacement Kit, 620602-05
17L93	LB-66723 SUPPORT-BNR
17L28	LB-89287B BOX-COLL
93L84	LB-99004A COLLECTOR BOX
20M07	619598-61 COLD END HEADER BOX 105671-49
71L02	Gasket Set Flue Collector Box & Inducer for MPGA050B3B MPGA050B4B
61M11	LB-96426 GASKET-BURNER BOX/VEST
15V92	Collector Box Gasket
95W61	609313-02 REPL COLD END COLL BOX KIT
56M10	GASKET-PATCH PLATE
17F46	619598-44 Collector Box, Found in EL296 Series
17F39	619598-37 Collector Box, Found in ML195 Series
16U03	619598-03 KIT -COLLECTOR BOX 105672-04
16U04	619598-04 KIT -COLLECTOR BOX 105672-05
59M30	R20095110 COLLECTOR-FLUE BOX
44W54	102109-01 Collector Box
17H42	Heat Exchanger ML193E/A93E/92GE UH110
20L43	LB-67141 BAFFLE


**FLAME SENSORS**

52W29	Precision Speed Equipment LB-74940A Flame Sensor Kit
41K56	White Rodgers LB-109261A Replacement Nitride Ignitor Assembly
49M85	Precision Speed Equipment PSE-L60-SB Electrode Ignitor
49M84	Precision Speed Equipment PSE-L59-SB Flame Sensor
X9547	Universal Intermittent Pilot Ignition Module
80M29	Furnace Ignitor
56W61	Hot Surface Ignitor for Air Models
40L81	Precision Speed Equipment LB-94701A Flame Sensor Kit
17J56	Precision Speed Equipment PSE-HC2-SB Flame Sensor
79J21	Precision Speed Equipment PSE-L19-SB Electrode Ignitor
17J57	Precision Speed Equipment PSE-HC3-SB Electrode Ignitor
62K50	LB-79982C Flame Sensor Kit

69W43



## Flame Sensor Kit

- Kit contains 1 Precision Speed Equipment flame sensor L79 (102431-02)
- Rod max temp: 2190°F
- Ceramic max temp: 1000°F
- Insulation max temp: 250°F
- 90° "crook" on end



### FLAME SENSORS (Continued)

69W43	Precision Speed Equipment LB-74940B Flame Sensor Kit
Y2927	Glowfly Universal 120Vac Hot Surface Igniter, Pack of 1
Y2928	Glowfly Universal 120Vac Hot Surface Igniter, Pack of 6
28G36	Precision Speed Equipment PSE-LN1-SB Electrode
21L98	Precision Speed Equipment PSE-L44-SB Electrode Ignitor
21L99	Precision Speed Equipment PSE-L45-SB Flame Sensor
51M14	Precision Speed Equipment PSE-L58-SB Flame Sensor
80K09	Precision Speed Equipment PSE-L42-SB Electrode Ignitor
15K16	Lennox 104987-01 Flame Sensor - ULN
18G89	Precision Speed Equipment PSE-LN9-SB Flame Sensor
70L55	Igniter Flame Rod Assembly For Pilot Burners Includes 18" Cable
51M93	Igniter - ARC Boxed for Norton 201Q
X4459	White-Rodgers 50A55-843 Universal Silicon Carbide Integrated Furnace Control, 24 VAC, 120 VAC, 50/60 Hz
10P28	30 mV Thermocouple with 11/32 32 Male Connector Nut Connection and 36" Leads" Q340 Series
98M87	Flame Sensor
43K53	Flame Sensor
73K38	IGNITOR
13H27	Electrode-Flame Sensor
98P78	5" Hot Surface Furnace Ignitor" Ceramic Block Style B
13H25	ELECTRODE
45L68	LB-63386CJ DISCHARGE SENSOR ASSEMBLY
28M97	20467102 Flame Sensor
25N40	19" Hot Surface Furnace Ignitor" Ceramic Block Style B
20J91	Flame Sensor
27J02	Flame Sensor
20W99	Hot Surface Ignitor 150V
44L48	Precision Speed Equipment PSE-L48-SB Flame Sensor
25N42	Silicon Carbide Hot Surface Ignitor" 5.25" Lead Receptacle with 0.093" Male Pins" Replaces R/S 41-403" 41-409
20J90	IGNITOR-ELECTRODE
Y7760	White-Rodgers 21D64-5PK Hot Rod HSI Universal Silicon Nitride Ignitor
94X26	PB UK-1090 UNIVERSAL KIT FLAT (HSI)
X1085	Honeywell Q3400A1024, 30" Ignitor Flame Rod Assembly for Smart Valve Pilots
45M47	51805U Igniter Electronic
12L09	104160-01 Flame Sensor
27L41	LB-91394B KT-ELECTRODE
98P77	Silicon Carbide Hot Surface Ignitor" 5.25" Lead Receptacle with 0.093" Male Pins Replaces R/S 41-405



### FLAME SENSORS (Continued)

X4460	White-Rodgers 50A65-843 Universal Nitride Integrated Furnace Control, 25 VAC 50/60 Hz
96M49	65319000 ELECTRODE
33J37	Gas Furnace Ignitor
X9281	HotRod Universal Nitride Upgrade Kit For Conversion of Silicon Carbide (Flat or Spiral), 120V
20C76	106379-01 IGNITOR
10P29	30 mV Thermocouple with 11/32 32 Male Connector Nut Connection and 30" Leads" Q340 Series
20J48	106588-01 IGNITOR
90H83	T6-2092 Flame Sensor
94X27	PB FC-055 HSI KIT ROUND
93J54	Temp Sensor 13.125 10000 OHMS 60V-FEMALE
84K65	PSE-A21b Spark Electrode
19D31	Flame Sensor
25N41	Silicon Carbide Hot Surface Ignitor" 11" Lead Electrical Connection Stripped Ends
75M72	IGNITOR
87X85	Silicon Carbide Hot Surface Ignitor" 5.25" Lead Molex Side Lock Connector with 0.092" Male Pins
36K32	Nozzle Line Electrode Assembly NL6464
83L72	R45708-002 Flame Sensor
98M85	R100220-01 IGNITOR
83L71	R39050B001 ELECTRODE
39F95	Sensing Probe" 0.114" Dia." 18 AWG Gauge Spade Terminal" Locating Dimension 0.344 "
10P27	30 mV Thermocouple with 11/32 32 Male Connector Nut Connection and 24" Leads" Q340 Series
52M72	20467101 Flame Sensor
87X86	Silicon Carbide Hot Surface Ignitor" 5.25" Lead Receptacle with 0.093" Male Pins Replaces R/S 41-412
52M71	IGNITOR
64X09	Silicon Carbide Hot Surface Ignitor" 6.125" Lead Electrical Connector Matches ARMSTRONG #44744-2
96M48	65319100 Flame Sensor
12F19	Sensing Probe" 0.114" Dia." 18 AWG Gauge Spade Terminal" Locating Dimension 0.578 "
14K99	IGNITOR-ELECTRODE
90H82	T6-2091 ELECTRODE
33F37	Sensing Probe" 0.114" Dia." 18 AWG Gauge Spade Terminal" Locating Dimension 0.344 "
37H40	Electrode Kit - F Head up to 9
87X84	Silicon Carbide Hot Surface Ignitor" 4.5" Lead Molex Front Lock Connector with 0.092" Male Pins Replaces R/S 41-410
32P75	WHITE RODGERS H06E-24 THERMOCOUPLE 24" "
79L59	65255700 Flame Sensor Lead
32P76	36" Universal Replacement Thermocouple For Water Heater Use and Heating Devices with a Standing Pilot
96P01	Silicon Carbide Hot Surface Ignitor" 5.5" Lead Molex Internally Keyed Connector with 0.093" Male Pins
10P30	30 mV Thermocouple with 11/32 32 Male Connector Nut Connection and 48" Leads" Q340 Series
36K53	Sensor - Cad Cell with 14" Leads for AFII Oil Burner



### BURNERS

#### GAS/OIL

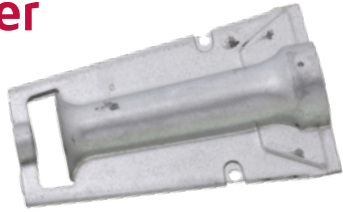
79J74	79J7401 BURNER ASSY INSHOT LGA SERIES
58L67	Lennox LB-94731B Cluster Burner Assembly
58L68	Lennox LB-94731C Cluster Burner Assembly
17J58	T6-2110 BURNER
71M82	LB-106845A BURNER - MAIN
58L69	LB-94731D BURNER ASSY



**60M56**


# Inshot Burner

Single Burner



## BURNERS (Continued)

### GAS/OIL (Continued)

60M56	Lennox Inshot Burner, Single Burner
46K18	R39271B001 BURNER
14X54	104910-11 BURNER ASSY
13U27	100195-06 BURNER OIL ARM 1810
69W89	602866-08 Burner Assy (090) # 609702-01
69W88	602866-06 Burner Assy (070) # 609702-01
58L70	LB-94731E BURNER ASSY
58L66	LB-94731A BURNER ASSY
27K33	27K3301 BURNER - INSHOT
14X49	104910-07 BURNER ASSY
69W87	602866-04 Burner Assy (045) # 609702-01
71L03	R20004601 BURNER-INSHOT
14X46	104910-05 BURNER ASSY
14X42	104910-03 BURNER ASSY
69W90	602866-10 Burner Assy (110) # 609702-01
14C38	612997-06 NOISE REDUCTION BURNER ASSY
14X53	104910-09 BURNER ASSY
56K21	FBX64HGXS with 3174908 5-3/16" INS
20J87	65246300 BURNER-INSHOT
14C40	612997-10 NOISE REDUCTION BURNER ASSY
14C39	612997-08 NOISE REDUCTION BURNER ASSY
18L62	619796-12 Inshot Burner Assembly (12)
69W91	602866-12 Burner Assy (135)
75W41	R39271B002 BURNER-SS INSHOT
14X47	104910-06 BURNER ASSY
18L52	619795-03 Inshot Burner Assembly (3)
25B33	625347-02 BURNER BOX UH ASSY 80% CLOSED
27K66	65257000 BURNER-INSHOT

### KITS

16U97	Burner Support & Cap Kit
-------	--------------------------



## GAS VALVES

73W17	Honeywell 102837-01 Dual Direct Ignition Gas Valve, 24 Volts
18M65	18M6501 VALVE, GAS (2 STAGE) HN VR8205Q
16Y31	Gas Valve, 3/4" x 3/4", Natural Gas, LF25 Series
74W26	102837-02 VALVE-GAS W/BARB
83W12	103181-02 VALVE-GAS (2 STG NAT)
60J59	Honeywell 60J5901 Dual Direct Ignition Gas Valve, 24 Volts
13H33	13H3301 VALVE, GAS R38320B001
56M40	56M4001 VALVE-GAS (2 STAGE)
85K35	24V Dual Direct Ignition Gas Valve with 3/4" x 3/4" Inlet/Outlet Standard Opening Natural Fuel" 0.62 A Anticipator Setting
77W04	103181-01 VALVE-GAS (2 STG NAT)



## GAS VALVES (Continued)

15D34	Modulating Gas Valve
31L82	VALVE-GAS
72W34	103016-01 VALVE-GAS (Modulating Nat)
11L08	103181-05 VALVE-GAS (2 STG NAT)
41K35	Honeywell 41K3501 Gas Valve, 1/2"
28M95	20430701 VALV-GAS/IGN CON SVII (45390-2)
50W74	LB-115291C Gas Valve Assy - Nat
41K37	41K3701 VALVE-GAS
99K65	99K6501 GAS VALVE
72W35	103016-02 VALVE-GAS (Modulating LP)
41K38	41K3801 GAS VALVE
78L62	VLV GAS LP VR8305Q-4161 24V -40 - 175F
13H06	13H0601 VALVE, GAS
98W07	103716-01 VALVE-GAS (NAT)
21V12	105155-05 VALVE-GAS
17N46	Honeywell VR8345M4302/U Universal Intermittent / Direct Ignition Gas Valve, Standard Opening, 24VAC, 3/4" x 3/4", 3.5" WC
87E09	HN VR8200H1236 VALVE-GAS *
16A52	Gas Valve
94C89	24V Dual Standing Pilot Gas Valve with 1/2" x 1/2" Inlet/Outlet Step Opening Natural Fuel" 0.7 A Anticipator Setting
10K54	65237600 VALVE-PROPANE GAS
69W44	102688-01 VALVE-GAS (2 STG NAT)
89M57	LB-110676A Gas Valve & LP Kit (1/2")
10A85	103181-03 VALVE-GAS (2 STG NAT)
47K24	R41516-001 VALVE-GAS
17H21	White-Rodgers 36J24-214 Electronic Ignition Gas Valve, 1 - Stage Slow Opening
16E02	HN V800A1161 VALVE-GAS *
30W47	LB-114896 Gas Valve Kit - HM61
31L13	31L1301 VALVE, GAS LP
70L53	1/2" x 1/2" NPT Intermittent Hot Surface Pilot Ignition
78L42	78L4201 VALVE-GAS (2 STAGE)
20J40	Gas Valve, Natural Gas, 3/4 Inch Inlet and Outlet, 24V Coil, 105601-03
17H05	Robertshaw 720-474 Gas Valve for Mobile Home Application, 24 Volt, 1/2" x 1/2"
17H20	White-Rodgers 36J22-214 Electronic Ignition Gas Valve, 1 - Stage Fast Opening
77W89	103191-01 KIT-VALVE SPRING (NAT to LP)
17H22	White-Rodgers 36H64-463 Electronic Ignition Gas Valve, 2 - Stage Fast Open
13H41	13H4101 VALVE, GAS
10P33	Honeywell VR8200A2132/U Standing Pilot Gas Valve, Standard Opening, Single Stage, 24 VAC, 1/2" x 1/2", 3.5" WC
78L60	Honeywell 78L6001 Natural Gas Valve, 24 Volts

**78L60**

# Honeywell

## Natural Gas Valve

- 2-Stage Dual Direct Ignition, 24 VAC
- First stage coil construction
- 1/4" Quick connect terminals
- 3/4" NPT inlet/outlet connection
- Alluminum alloy valve body material
- Mounting position: 90 degrees any direction from upright
- Maximum ambient temperature: 175 deg. F
- Minimum ambient temperature: -40 deg. F





## GAS VALVES (Continued)

10A33	103181-04 Gas Valve, 2 Stage
X1087	HN VR8245M2530 GAS VALVE-UNIV INT/DIR SP
Y9933	Honeywell VR8300M4406/U Standing Pilot Gas Valve, 1 - Stage Standard Opening, 3/4 x 3/4 in.
98M41	LB-109101B GAS VALVE REPL KIT (Nat)
X1538	Lever Acting Design Line Pressure Regulator for 2 PSI Piping Systems 1/2" x 1/2 7" to 11" w.c. with 12A09 Vent Limiter
17H19	White-Rodgers 36J55-214 Electronic Ignition Gas Valve, 2 - Stage Slow Opening
20U05	103016-04 Gas Valve Modulating
24W73	100935-01 VALVE-EXP (R410A) 4 TON
92W78	609627-01 Kit-Gas Valve Barbed Fitting
20J35	Gas Valve, 1-Stage, Natural Gas, 1/2 Inch Inlet and Outlet, 105155-03
20J38	Gas Valve, 1-Stage, LP Gas (Propane), 1/2 Inch Inlet and Outlet, 105155-04
51P89	White-Rodgers 36C03-300 Standing Pilot Gas Valve, 1 - Stage Fast Opening
17H06	Robertshaw 710-502 Millivolt Low Capacity Gas Valve, 1/2" x 1/2"
X1086	Honeywell SV9501M2528/U Intermittent Hot Surface Pilot SmartValve, Standard Opening 1/2" x 1/2", 3.5" WC
95M48	100210-01 Valve Core
16A53	Valve-Gas Lp (10.0" Wc)
60J92	65314900 VALVE-GAS
15V44	Gas Valve



## PRESSURE SWITCHES

18L89	SWITCH BLOWER PROVE SP OPEN 10MA@5
14A45	UniControl 104549-03 Pressure Switch (-.90/- .50), SPST N.O., 2-Stage
11U64	UniControl 104371-01 Pressure Switch (.65), SPST N.O.
78W57	Honeywell 101572-04 Pressure Switch (.27), SPST N.O.
11U72	104371-09 SWITCH - PRESSURE .90
14A48	104549-06 Pressure Switch 2-STG-.85/- .50
24W97	Microtechnologies 101231-01 Pressure Switch, (.40) SPST N.O.
15M20	Microtechnologies 15M2001 Pressure Switch (.10 WC), SPST N.O.
63K93	Honeywell 63K9301 Pressure Switch (.20), SPST N.O.
14A43	104549-01 Pressure Switch 2-STG-.90/- .45
33W19	Microtechnologies 101599-03 Pressure Switch (.30/1.37), SPST
63W57	101021-12 Pressure Switch 2Stg .55/.95
27W13	Sensata Technologies 100087-08 High Pressure Switch (550PSI), N.C.
11U65	104371-02 SWITCH - PRESSURE .60
14T65	104936-02 SWITCH PRESS .90/.25 (UH)
14A53	104549-11 Pressure Switch 2-STG-.70/- .40
14T66	104937-01 SWITCH PRESS 1.00/.25 (DF)
36W77	101599-04 Switch-Press (2Stage .25/1.22)
51W91	101256-03 Switch-Pressure (0.95)
80W52	103247-04 Switch-Pressure .60
80W57	103247-09 Switch-Pressure .65
49L91	49L9101 SWITCH-PRESSURE (.51)
11U70	104371-07 SWITCH - PRESSURE .80
27W17	Microtechnologies 101256-01 Pressure Switch (0.85), SPST N.O.
14A54	104549-12 Pressure Switch 2-STG-.75/- .45
49L90	49L9001 SWITCH-PRESSURE (.47)
63W39	101021-13 Pressure Switch 2Stg .50/.85
80W53	103247-05 Switch-Pressure .68
80K26	80K2601 PRESSURE SWITCH (-0.29"/-.05")
11K98	LB-79541C KIT-PR SWCH
69W57	102737-05 Switch-Pressure 2 Stg (30/.68)
14A46	104549-04 Pressure Switch 2-STG-.81/- .45
91W53	Pressure Switch, Stage 2 (.30/.60)
63W40	102529-01 Pressure Switch 2Stg .20/.40
51W92	101256-04 Switch-Pressure (1.00)
69W56	Pressure Switch, 2 Stage (25/.60)

## 14T64



## Pressure Switch Kit

- UniControl DNS2-1488-01 Pressure Switch
- SPST N.O. Switch configuration
- Snap acting
- Contact rating: 5A resistive at 24V, 120 to 277 VAC



## PRESSURE SWITCHES (Continued)

14T64	UniControl 104936-01 Pressure Switch (1.00/.25 UH), SPST N.O.
33W18	101599-02 Switch-Press (2Stage .20/1.32)
26W42	101126-03 SWITCH-PRESS 2 Stg .55/.95
88W59	103094-01 SWITCH-PRESSURE SPST -40/185F
26W45	101126-05 SWITCH-PRESS 2 Stg .90/1.50
18M63	SWITCH-PRESSURE
26W86	101021-10 Pressure Switch 2Stg .90/1.20
33J88	33J8801 PRESSURE SWITCH SPST 120/240
24W50	101021-05 Pressure Switch 2Stg .90/1.50
80W51	103247-03 Switch-Pressure .55
64W86	101126-09 SWITCH-PRESS 2 Stg .90/1.20
Y8802	Supco NS2000031 Universal Air Pressure Switch .10" to 10" WC
14A57	104549-15 Pressuer Switch 2-STG-.80/- .50
11U66	104371-03 SWITCH - PRESSURE .55
57W79	101432-14 SWITCH-PRESS GREEN .70
73W35	102737-09 Switch-Pressure 2 Stg(.55/.25)
11U71	104371-08 SWITCH - PRESSURE .85
12L46	12L4601 PRESSURE SWITCH
24W98	101231-02 Pressure Switch (.31)
11U67	104371-04 SWITCH - PRESSURE .75
24W51	101021-06 Pressure Switch 2Stg .65/1.15
23W26	100087-06 Switch - Low Pressure (40psi)
18M62	SWITCH-PRESSURE
88K90	IS2 Series NR Air Switch/General Sales" 1/4" O.D. Straight Connection, .47"±.05" wc PF Setpoint
49L92	49L9201 SWITCH-PRESSURE (.58)
14A47	104549-05 Pressure Switch 2-STG-.55/- .35
57M67	57M6701 SWITCH-PRESSURE
25B93	104549-20 PRESSURE SWITCH 2STG -.95/- .55
67K32	67K3201 PRESSURE SWITCH
73W33	Switch Pressure, 2 Stage (.68/.35)
12W53	R20293411 Switch-Pressure (High Fire)
26W76	65289200 SWITCH-PRESSURE (0.40" WC)
13R26	614285-03 KIT - HI PRESSURE SWITCH
51W93	101256-05 Switch-Pressure (1.12)
59W74	R101432-17 SWITCH-PRESSURE .80
14A51	104549-09 Pressure Switch 2-STG-.74/- .41
13R80	614285-05 KIT - LO PRESSURE SWITCH
14A44	104549-02 pressure Switch 2-STG-.60/- .35
57M66	57M6601 SWITCH-PRESSURE
63W56	101021-11 Pressure Switch 2Stg .35/.60
12M92	103247-11 SWITCH - PRESSURE .70
29W64	101126-07 SWITCH-PRESS 2 Stg .90/1.30
20J44	LF25 Pressure Switch Kit
13R25	Lennox 614285-02, High Pressure Switch, Actuates at 640 PSI; Resets at 475 PSI


**PRESSURE SWITCHES (Continued)**

60L03	60L0301 PRESSURE SWITCH
79J07	79J0701 SWITCH PRESSURE LOW AMBIENT R22
80K25	SWITCH-PRESSURE
17U20	Low Altitude Pressure Switch, 1.0" (0-4500')
33W17	101599-01 Switch-Press (2 Stage .15/.83)
14T67	104937-02 SWITCH PRESS .90/.25 (DF)
56L32	56L3201 SWITCH-PRESSURE (.36)
55W64	100087-11 Switch-High Pressure (590PSI)
26W85	101021-09 Pressure Switch 2Stg .90/1.30
34M77	65289100 SWITCH-PRESSURE
97J69	97J6901 AIR PRESSURE SWITCH
67K30	67K3001 PRESSURE SWITCH
11K95	LB-79541A KIT-PR SWITCH
78W58	101572-05 SWITCH-PRESS .27
19L57	SWITCH-PRESSURE
11U68	104371-05 SWITCH - PRESSURE .70
34M73	65309300 SWITCH-PRESSURE
24L51	IS2 Series NR Air Switch/General Sales" 1/4" O.D. Straight Connection, .51"±.05" wc PF Setpoint
11U69	104371-06 SWITCH - PRESSURE .50
34M74	65289400 SWITCH-PRESSURE
84M92	Honeywell GFS3418A-3156/B Airswitch Safety Interlock Pressure Switch for Air, Natural or LP Gas, 120/277 Volts, 5 Amps, SPDT N.O., 1/10 HP
73W76	R100684-08 SWITCH-PRESSURE-WHITE .50
80K52	80K5201 SWITCH PRESSURE HIGH R22
26W41	101126-02 SWITCH-PRESS 2 Stg .50/.85
75M22	SWITCH-PRESSURE
86M36	MP 100087-01 Switch - High Pressure
79J08	79J0801 SWITCH PRESSURE LOW R22
69W55	102737-03 Switch-Pressure 2 Stg (20/.55)
87H93	87H9301 SWITCH-PRESSURE
26W46	101126-06 SWITCH-PRESS 2 Stg .65/1.15
80K27	80K2701 PRESSURE SWITCH (-0.34"/+/- .05")
14A49	104549-07 Pressure Switch 2-STG-.85/- .45
80K28	80K2801 PRESSURE SWITCH (-0.43"/+/- .05")
51W90	101256-02 Switch-Pressure (0.65)
14A50	104549-08 Pressure Switch 2-STG-.50/- .35
40W05	101599-05 Switch-Press (2Stage .25/1.02)
34M76	65288900 SWITCH-PRESSURE
15W56	65289300 Switch-Pressure
92L21	92L2101 SWITCH-PRESSURE
10J73	103827-01 COMBUSTION SWITCH-SPST
58H31	SWITCH-PRESSURE
65W49	R100684-09 SWITCH-PRESSURE-RED .60
84M96	100216-01 SWITCH-LOSS OF CHARGE
15P85	105078-01 Switch-Pressure .55
14A55	104549-13 Pressure Switch w-STG-.70/- .45
75M20	75M2001 SWITCH-PRESSURE
38M77	38M7701 SWITCH PRESSURE HIGH R410A
88J80	SWITCH-PRESSURE
38M64	38M6401 SWITCH-PRESSURE (1.95)
63W41	102529-02 Pressure Switch 2Stg .20/.35
31L11	31L1101 SWITCH AIR FS4602-2692
38M78	SWITCH PRES LOW AMP R410A 120/240 600PSI
Y8805	Supco RSS498013 Adjustable Air Pressure Switch 1"-4" WC
10M51	SWITCH-HIGH PRESSURE
93W01	100087-12 Switch-High Pressure (590PSI)
78W47	SWITCH-PRESS SPST LOW AMB 600 PSIG
93W84	103613-08 Switch-Pressure .35/.50


**PRESSURE SWITCHES (Continued)**

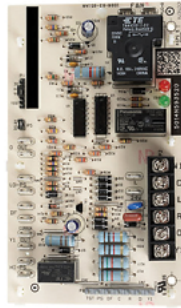
10K56	103885-01 HI PRESSURE SWITCH
38M76	38M7601 SWITCH PRESSURE LOW R410A
73W36	Pressure Switch, 2 Stage (.50/20)
22U24	105078-04 SWITCH-PRESS SINGLE STAGE ULN
20J97	65324000 SWITCH-PRESSURE
24L22	24L2201 SWITCH PRESSURE
20J47	LF25 Pressure Switch Kit
15M22	SWITCH-HIGH ALTITUDE
24W49	101021-04 Pressure Switch 2Stg .70/1.05
10K72	65324800 SWITCH-PRESSURE
33J90	33J9001 PRESSURE SWITCH
40W06	101599-06 Switch-Press (2Stage .20/1.12)
20A87	606569-18 High Altitude Pressure Switch Kit
22K44	106497-01 PRESSURE SWITCH (-0.65" WC)
69W58	102737-06 Switch-Pressure 2 Stg (30/.75)
13R81	614285-06 KIT - HI PRESSURE SWITCH
16V45	104549-17 PRESSURE SWITCH 2-STG-.50/- .15
12L20	100087-14 SWITCH-HI PRESS
12W48	R20558701 Switch-Pressure (Low Fire)
20J43	LF25 Pressure Switch Kit
86H31	86H3101 PRESS SWITCH-HIGH-MANUAL RESET
26W83	101021-07 Pressure Switch 2Stg .70/.85
56M04	56M0401 SWITCH - PRESSURE (.55)
80K29	80K2901 PRESSURE SWITCH (-0.45"/+/- .05")
15C83	Low Pressure Switch (90 psi)
82M33	20293413 SWITCH-PRESSURE
17W14	R20400503 LOW PRESSURE SWITCH
12L21	100087-15 SWITCH-LO PRESS
20K91	Pressure Switch, .15 inch WC, 105078-03
98M69	100087-05 Switch - High Pressure
97M02	65334200 Switch - Pressure
99M99	R100324-01 SWITCH-HIGH PRESSURE
92L19	20294301 SWITCH-TEMP
13R28	614285-04 KIT - LO PRESSURE SWITCH
32W87	100087-09 Switch - Low Pressure
43G44	43G4401 SWITCH PRESSURE
R100324-02	SWITCH-HI PRESSURE
18L49	High Altitude Pressure Switch Kit
18L48	High Altitude Pressure Switch Kit
17V95	High Altitude Pressure Switch .95" (4500-10000')
36W49	65324900 SWITCH-PRESSURE (.55")
20J46	LF25 Pressure Switch Kit
97J36	97J3601 SWITCH PRESSURE
20B42	Pressure Switch, .2 Inch WC, 105078-02
10M85	10M8501 PRESSURE SWITCH-HIGH-AUTO RESET
22K45	106497-02 PRESSURE SWITCH (-0.75" WC)
73W34	102737-08 Switch-Pressure 2 Stg(.62/.35)
93W86	Microtechnologies 103614-11 Pressure Switch (.65), SPST N.O.
64W48	SWITCH-PRESSURE SPST LOW AMB 20F to 150F
93W87	103614-12 SWITCH-PRESSURE .60
18L19	High Altitude Pressure Switch Kit
18L32	105982-08 SWITCH-PRESSURE
14X89	100087-16 SWITCH-LO PRESS (40psi/90psi)
11Y32	103736-03 SWITCH-HI PRESS AUTO RESET
24K02	107346-01 SWITCH-LOW PRESSURE (40 PSI)
19F44	Honeywell HE150A1005 Advance Bypass Humidifier, 12 Gallons Per Day
22V51	107170-02 SWITCH-PRESS SNG STG ULN .20"WC
11F05	103736-02 HI PRESSURE SWITCH
56M93	SWITCH-PRESSURE

**16V38**



# Defrost Control Board

- Time/temperature defrost control
- Defrost relay
- Anti-short cycle timed off control
- High/low pressure switch system control
- Manufacturing test mode
- Field connection terminal strip



## DEFROST CONTROLS

16V38	Defrost Board Control
15D57	614943-02 DEFROST CONTROL ASSY
16V37	Defrost Control Kit
23X17	620244-02 BOARD - DEFROST CONTROL
15D55	620244-01 Defrost Control Assembly
15P86	Defrost Sensor with Harness
85H75	85H7501PR DEFROST CTL
17M14	Honeywell Defrost Control Board
46K67	R47181-001 CONTROL-DEFROST
21A90	101334-11 Sensor-Defrost (Harness)
86K78	LB-91536A KIT-DEFROST RELAY
47W47	102151-01 Defrost Control
65W68	102438-01 THERMOSTAT-DEFROST



## HEATING CONTROLS

39M84	39M8401 CONTROL-BLOWER
Y3653	8" H x 6" W x 1.5" D Universal Twinning/Paralleling Kit, 24VAC
52M46	Lennox Armstrong Ducane Control Board
59K21	LB-90403A AHC1-2 Control Board
10W57	R45632-001 BOARD-CIRCUIT
16V29	Ignition Blower Control
60M28	R46256-001 CONTROL-BLOWER
46K65	06429D355 CONTROL-BLOWER
68M64	Furnace Control Board, 6" x 6" x 6"
39W67	101601-01 Humidtrol Zoning Accessory
Y8844	Supco Q103 Sequencer
Y0571	Furnace Control Board - Replacement for OEM Models Including Carrier Ces0110057-Xx Series Control Boards
Y0572	Furnace Control - With Software for Enhanced Controls Operation in Counterflow and Downflow Furnace Applications
R102199-02	IGNITOR WITH WIRE
Y0570	Furnace Control Board - Replacement for OEM Models Including Goodman B18099-Xx Series Control Boards
73M70	LB-109490A IMC Replacement Kit GP1-1
Y8847	Supco BC7070 CAMSTAT Blower Control



## HEATING ELEMENTS

99J41	Backer LB-66231B Electric Heat Framed Element Assembly, 30 kW, 460 Volts
99J38	Backer LB-66230E Electric Heat Element, 15 kW, 460 Volts
99J44	Backer LB-66231E Electric Heat Framed Element Assembly, 5 kW, 277 Volts
99J40	Backer LB-66231A Electric Heat Framed Element Assembly, 5 kW, 240 Volts



## HEATING ELEMENTS (Continued)


99J37	Backer LB-66230D Electric Heat Element, 5 kW, 240 Volts
70W80	Backer 102985-02 Electric Heat Framed Element Assembly, 35 kW, 240 Volts
99J43	Backer LB-66231D Electric Heat Framed Element Assembly, 5 kW, 240 Volts
99J45	Backer LB-66231F Electric Heat Framed Element Assembly, 5 kW, 346 Volts
77F84	Backer 77F8401 Electrical Wire Element Package, 5 kW, 240 Volts
99J39	Backer LB-66230F Electric Heat Element, 5 kW, 346 Volts
43L96	Backer LB-81453CCK Electric Heat Element, 4.5 kW, 240 Volts
70W64	Backer 102926-01 Electric Heat Framed Element Assembly, 10 kW, 240 Volts
82A63	Backer 82A6301 Electrical Wire Element Package, 5.5 kW, 240 Volts
70W79	Backer 102985-01 Electric Heat Framed Element Assembly, 25 kW, 240 Volts
70W83	Backer 102985-05 Electric Heat Framed Element Assembly, 25 kW, 600 Volts
10G85	Backer 103748-14 Electric Heat Element, 22.5 kW, 240 Volts
27H73	Backer 27H7301 Electrical Element Replacement Package, 3.333 kW, 240 Volts
40W54	Backer LB-81453CS Electric Heat Element, 5 kW, 240 Volts
56K40	Backer LB-81453CAK Electric Heat Element, 4.167 kW, 240 Volts
77F86	Backer 77F8601 Electrical Wire Element Package, 5 kW, 346 Volts
99J36	Backer LB-66230C Electric Heat Element, 2.5 kW, 346 Volts
77L94	Backer LB-81453CCM Electric Heat Element, 6 kW, 240 Volts
70W67	Backer 102926-04 Electric Heat Framed Element Assembly, 15 kW, 600 Volts
82A52	Backer 82A5201 Electrical Wire Element Package, 4.5 kW, 240 Volts
87M63	Backer LB-81453CAL Electric Heat Element, 2.5 kW, 240 Volts
82F85	Backer LB-52948BH Electrical Element Package, 5 kW, 240 Volts
70W63	Backer 102922-01 Electric Heat Framed Element Assembly, 50 kW, 240 Volts
70W70	Backer 102967-03 Electric Heat Framed Element Assembly, 20 kW, 600 Volts
76W37	Calortech 100617-01 Stainless Steel Sheath Strip Heater, 500 Watts, 480 Volts
26L19	Backer LB-63900T Electric Heat Framed Element Assembly





## BOILER PARTS


78P26	Dunkirk 2272159 Induced Draft Blower and Gasket
74N47	Hot Surface Igniter Kit for Gas-Fired Direct Vent Condensing Hot Water Boiler
10D82	Induced Draft Blower and Gasket for Gas Fired Induced Draft Hot Water Boiler
Y8130	DK 550002699 KIT,RPLMT,BLWR ASSY
20X14	Dunkirk 550003793 Pilot Assy
13U14	Hydrolevel Control for Gas-Fired Direct Vent Condensing Hot Water Boiler
92X30	Intermittent Pilot Ignition Control 24V, 50/60 Hz, 150mA (control only) ANSI Z21.20 for Gas Fired Hot Water Boiler
32X46	Induced Draft Blower Kit for High Efficiency Gas-Fired Boiler
Y5368	Control Module Kit for Wall Mounted Condensing Gas Boiler DKVLT-050/075/100/150/200/299
32X49	UT 1013-10 Control Integrated Boiler - GWB9 for Gas-Fired Direct Vent Condensing Hot Water Boiler 90-50/75/100
Y8160	Blower Kit
Y5408	Spark Pilot Kit - Natural Gas & Propane for Cast Iron Gas Boiler for Forced Hot Water
14D97	DK 240009113 CNTRL HYDROSTAT 3200
70N68	Pilot Burner for Use with Natural Gas Only 3-9 Section for Gas-Fired Hot Water Boiler
Y5361	Blower Kit for Wall Mounted Condensing Gas Boiler DKVLT-050/075/100
Y5345	Burner Inspection Kit for Wall Mounted Condensing Gas Boiler DKVLT-50-200
75Y14	7" Vent Damper for Cast Iron Gas Boiler for Forced Hot Water BWBAAN000170195
75P58	DK 43300510 BLOWER-INDUCED DRAFT XE
Y5365	Dunkirk 550002295 Condensate Collector Kit for Wall Mounted Condensing Gas Boiler DKVLT-150/200
20X10	Dunkirk 550003778 Natural To LP (Propane) Kit
Y5405	Gas Valve VR8204H, Spark Natural, 24V, 60 Hz, 0.5A Use with Class 2 Transformer for Cast Iron Gas Fired Boiler For Forced Hot Water DXL-50 - 150
Y5350	Igniter Kit for Wall Mounted Condensing Gas Boiler DKVLT-050/075/100
32X47	HONEYWELL Gas Valve VR8205 24V 60 Hz 0.5A Use with Class 2 Transformer for Gas-Fired Direct Vent Condensing Hot Water Boiler



	<b>BOILER PARTS (Continued)</b>
74P70	Gas Valve for Use with Natural Gas Only 2-5 Section for Gas Fired Induced Draft Hot Water Boiler
74P71	Gas Valve for Use with Natural Gas Only 6-7 Section for Gas Fired Induced Draft Hot Water Boiler
20X05	P40240012842 Hydrolevel Control
33N99	Two-way On-off Low Voltage 3/4" Sweat" 24 V N.C. Zone Valve
Y5379	Low Water Cut-Offs - Water Boiler, SPST, 24VAC, 1VA Power Consumption, 50VA Switching Capacity
Y5369	User Interface Kit for Wall Mounted Condensing Gas Boiler DKVLT-050/075/100/150/200
25B96	DK 240013218 HL4200 CONTROL - HYDROSTAT
Y5406	Gas Valve VR8304H4, Spark Natural, 24VAC, 60 Hz, 0.7A, for Cast Iron Gas Fired Boiler for Forced Hot Water DXL-170-200
20X54	Dunkirk 2-pipe CPVC vent adpt 150mbh
75Y13	6" Vent Damper for Cast Iron Gas Boiler for Forced Hot Water BWBAAN000120145
Y5351	Igniter Kit for Wall Mounted Condensing Gas Boiler DKVLT-150/200
Y5352	Flame Sensor Kit for Wall Mounted Condensing Gas Boiler DKVLT-050/075/100
14K21	DK 550003039 PILOT/BRKT ASSY (NAT)
21A26	DK 240012635 LWCO SENSOR W/CABLE
X6458	Honeywell FM911/U 1/2 in. NPT Backflow Preventer and Boiler Fill Valve Combo Assembly, Threaded
Y5413	Pilot with Orifice, Natural Gas, 2-7 Section, for Gas Fired Induced Draft Hot Water Boiler
51P92	Two-way On-off Low Voltage 3/4" Sweat" 24 V N.C. Zone Valve
Y5376	DK 240008246 PUMP GRUNDFOS UP15-42F
Y5356	Gas Valve Kit for Wall Mounted Condensing Gas Boiler DKVLT-100
32X50	Differential Air Pressure Switch 1.00" for Q90-100 Series 2 Gas-Fired Direct Vent Condensing" Hot Water Boiler
20X55	Dunkirk 2-pipe CPVC vent adapters 205mbh
20Y20	Duravent Polypropylene Vent Pipe 3 Inch x 3 Feet
Y5377	Small Water Circulation Pump, 115/230V, 1/6 HP, 2.15/1.07 Amps, 245 Watts, 2-Pole, Single-Phase Motor
45N04	Temperature Pressure Gauge 5" 70 - 320DEG F" 0 - 75 PSI Pressure
Y5411	36" Flame Sensor for Gas Fired Induced Draft Hot Water Boiler
44N53	Temperature Pressure Gauge 3-1/2" Neck 70 - 320DEG F 0 - 75 PSI Pressure" 2.5" Dial Diameter
20X52	Dunkirk 2-pipe Polypropylene Vent Adapter 150mbh
21A27	Dunkirk Sensor Wire, 24", HL BD710487302V
X6527	4.4 Gal Heating Expansion Tank
20C74	Dunkirk BD710786502V Pump Uper, 120V, 150K
20C66	Dunkirk 1260006Sp Press/Temp Gauge
74P49	Circulator Pump w/Flange Taco for Gas-Fired Direct Vent Condensing Hot Water Boiler
20C29	Dunkirk 550003151 Flame Sensor Replacement Kit
75P12	DK 240005933 VENT DAMPER OPERATOR
Y5380	High Temperature Supply Switch, 1/4" NPT Connection for Wall Mounted Condensing Gas Boiler
Y5415	Rollout Switch for Gas Fired Induced Draft Hot Water Boiler
20C37	Dunkirk 550003159 DHW Temp Sensor Kit
20C47	Dunkirk 550003535 Gas Valve Replacement Kit, 150K
21G73	Amtrol AT30 Expansion Tank For Closed Loop Hydronic Heat Systems, EX-30
99X96	Main Burner Less Pilot Bracket, 3-7 Section, for use with Natural and Propane Gas Only for Gas Fired Induced Draft Hot Water Boiler
Y5407	Control-Fixed Temperature Thermo Blocked Vent Safety Switch for Cast Iron Gas Fired Boiler For Forced Hot Water
Y5385	Section IV ASME Hot Water Relief Valve 3/4" Male Inlet x 3/4" Female Outlet" 30 psig Pressure" 250DEG F Maximum Temperature
95P51	3/4" ASME Relief Valve for Gas Fired Induced Draft Hot Water Boiler
25B97	DK 14662046 TRANSFORMER
20Y23	Duravent Polypropylene Vent, 90 Degree Elbow
20X03	Dunkirk 14615531 Burner Pilot Mount 262,299

	<b>BOILER PARTS (Continued)</b>
20X56	Dunkirk 80mm clamshell vent clamp (5 pack)
Y5410	50 VA Transformer, 120 VAC Primary, 24 VAC Secondary, 60 Hz, Class 2 for Cast Iron Gas Boiler For Forced Hot Water
20Y24	Duravent Polypropylene Vent 45-degree Elbow
20C30	Dunkirk 550003152 Ignition Electrode Kit
Y5393	Fuse, 3.15A, 250VAC, Slo-Blo Glass 5 x 20 mm
20C39	Dunkirk 550003191 Service Key Kit
Y5363	Blower Kit for Wall Mounted Condensing Gas Boiler DKVLT-200
14K22	DK 550003040 PILOT/BRKT ASSY (LP)
20X16	Dunkirk 240012909 Orifice, Natural Gas, 1/8", #38
20C73	Dunkirk BD710626001V Temp Sensor/High Limit
20C59	Dunkirk BD710109101V Pressure Sensor Water
20C49	Dunkirk 550003746 PCD/Control Replacement Kit W/O Key
10D91	DK 550002632 BURNER KIT 50/75/100 NAT/LP
14C89	Dunkirk 550003077 Control Conversion Kit - GWB8
X9466	Dunkirk 41800950 Heat Exchanger

	<b>HOT WATER COILS</b>
X2281	LX3 - CB30M-41/46 Hydronic Heating Unit, 21-1/4" Width x 22-5/8" Depth Fits Air Handler Size, 19-1/4" Width x 18" Depth Unit Discharge
X2282	LX4 - CB30M-51/65 Hydronic Heating Unit, 21-1/4" Width x 24-5/8" Depth Fits Air Handler Size, 19-1/4" Width x 19-1/2" Depth Unit Discharge
73J72	LB-74105B Hot Water Coil with LB-65553 SLAB
X2280	LX2 - CB30M-30/31 Hydronic Heating Unit, 21-1/4" Width x 20-5/8" Depth Fits Air Handler Size, 19-1/4" Width x 18" Depth Unit Discharge
61M82	LB-74615A Hot Water Coil with LB-65554 SLAB

	<b>ELECTRICAL COMPONENTS</b>
▶ 19S83	Lennox 621344-01 Blower Control Board Kit
15G22	615610-08 INVERTER 5hp 460V
15G29	615610-14 INVERTER 10hp 460V
15G26	615610-11 INVERTER 7.5hp 460V
15G19	615610-05 INVERTER 3hp 460V
15G25	615610-10 INVERTER 7.5hp 230V
15G28	615610-13 INVERTER 10hp 230V
Y6996	HVAC Condensing Unit Surge Protector SPD Type 2 -40DEG F 185DEG F
40K82	Computime 40K8201 Blower Circuit Control Board
97M33	LB-111422A Disconnect Cover Kit
42W18	101813-01 COIL-SOLENOID - 24V
15G21	615610-07 INVERTER 5hp 230V
14J76	614313-02 INVERTER, 460V
10H94	Lennox 611297-06 Control Module Kit with Spacer Ring
10J02	Lennox 611297-10 Control Module Kit with Spacer Ring

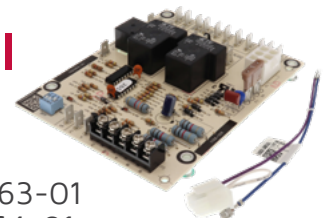
**19S83**



## Blower Control Board Kit

INCLUDES:

- Control Board - 106363-01
- Wire Harness - 106364-01
- Installation Instruction - 507992-01





**ELECTRICAL COMPONENTS**

24B69	622785-26 INVERTER 230V-2 HP
24E71	IZ NMD 12/2 X 75M RED (R/B CONDUCTORS)
24B72	622785-29 INVERTER 460V-3 HP
14F05	14F0501 BLOCK FUSE
24B70	622785-27 INVERTER 460V-2 HP
21Z41	622785-03 INVERTER 230V-3 HP-MODBUS
15G20	615610-06 INVERTER 3hp 575V
24B71	622785-28 INVERTER 230V-3 HP
24B83	622785-37 INVERTER 575V-3 HP
23C31	T6-1238 SEQUENCER
21Z40	622785-02 INVERTER 460V-2 HP-MODBUS
21Z42	622785-04 INVERTER 460V-3 HP-MODBUS
30F18	T6-1441 SEQUENCER
47J27	LB-50709BK Timed-Off Control
21E72	IZ 121802 18/2 STR SHLD FT4 75M
70W18	LB-90745AF Kit-ECM Module
14J77	104544-01 FILTER NOISE, INVERTER
44L43	COIL-SOLENOID
39N05	Electric Heat Sequencer 3 Switches On Timings 1-110 Sec Off Timings 1-110 Sec.
10P52	Electric Heat Sequencer 5 Switches On Timings 1-160 Sec Off Timings 1-160 Sec.
70W22	LB-90745AK Kit-ECM Module
39N06	Electric Heat Sequencer 4 Switches On Timings 1-110 Sec Off Timings 1-110Sec.
15G18	615610-04 INVERTER 3hp 230V
70W21	LB-90745AJ Kit-ECM Module
X2524	Electric Heat Sequencer, 2 Switches, On Timings 1-20 Sec., Off Timings 40-110 Sec.
86P90	Fuse Adapter 60 to 30 Reducer For Class H 250V
49W65	603114-01 KIT-SOLENOID
10M84	Mitsubishi 103368-01, Inverter Key Pad
24E70	IZ NMD-7-14-2 W/S 75M
45M46	Valve Coils for Two-Stage CleanCut XL Pump 115 VAC
45H04	Bussmann J60030-3C Class J Fuseblock, 600 Volts, 30 Amps, 3 Pole
60565	P-8-7158 BASE-FUSE
X2525	Electric Heat Sequencer, 1 Switch, On Timings 1-20 Sec., Off Timings 40-110 Sec.
59631	008-4372 BASE-FUSE
60M36	60M3601 PRIORISTAT
17R98	Block-Fuse, 20A
21P93	Electric Heat Sequencer 4 Switch (2)DPST 24 Control Volts 1-24 Sec. Main Switch on Time 45-75 Sec. Main Switch Off Time
89F02	13/32" x 1-1/2" Fuse Holder - 30A* 600V
14J79	104546-01 INVERTER REACTOR, 460V
14J74	332313-01 INVERTER, 208-230V
24B75	622785-32 INVERTER 230V-7.5 HP
15G30	615610-15 INVERTER 10hp 575V
70W26	LB-90745AP Kit-ECM Module
21Z50	622785-10 INVERTER 460V-10 HP-MODBUS
24B82	622785-36 INVERTER 575V-2 HP
22V85	614313-03 INVERTER, 575V
15G16	615610-02 Inverter 2 HP, 460V
15G17	615610-03 INVERTER 2hp 575V
21Z46	622785-08 INVERTER 460V-7.5 HP-MODBUS



**HUMIDIFICATION**

**EQUIPMENT**

▶ Y2786	Healthy Climate, Bypass Humidifier, 24V, 17 Gallon, HCWB3-17
Y2788	Healthy Climate, Power Humidifier, 120V, 18 Gallon, HCWP3-18
Y2784	Healthy Climate, Bypass Humidifier, 24V, 12 Gallon, HCWB3-12
▶ Y3432	Aprilaire, Steam Humidifier, 120/208/240V, 34.6 Gallon, 800
Y2787	Healthy Climate, Bypass Humidifier, 24V, 17 Gallon, HCWB3-17A

**Y2786**

**Bypass Humidifier (24V, 17 Gallon)**



- Available with Automatic Control to keep humidity precisely where it is needed
- Provides an easier to use and less intrusive option to portable units—no need to constantly fill and clean units
- Creates a healthier home and lessens skin irritations, sore throats and respiratory problems



**HUMIDIFICATION (Continued)**

Y3683	Healthy Climate HCWB3-17K By-Pass Humidifier with Installation Kit, Manual Control, 24 Volts, 60 Hz, 0.5 Amps, 17 Gallons Per Day
Y2789	Healthy Climate, Power Humidifier, 120V, 18 Gallon, HCWP3-18A
Y3681	Healthy Climate HCWB3-12K By-Pass Humidifier with Installation Kit, Manual Control, 24 Volts, 60 Hz, 0.5 Amps, 12 Gallons Per Day
Y2785	Healthy Climate, Bypass Humidifier, 24V, 12 Gallon, HCWB3-12A
Y0664	Aprilaire, Power Humidifier, 120V, 18 Gallon, 700M
Y0661	Aprilaire, Bypass Humidifier, 120V, 16.8 Gallon, 600
Y0662	Aprilaire, Bypass Humidifier, 120V, 16.8 Gallon, 600M
Y7748	Honeywell, Steam Humidifier, 120/240V, 11/22 Gallon, HM700A1000/U
Y0663	Aprilaire, Bypass Humidifier, 120V, 18 Gallon, 700
Y0658	Aprilaire, Bypass Humidifier, 120V, 16.8 Gallon, 400
Y3682	H/C HCWB3-12AK BP HUMID AUTO12GL/DAYw/KT
Y3684	Healthy Climate HCWB3-17AK By-Pass Humidifier with Installation Kit, Auto Control, 24 Volts, 0.5 Amps, 17 Gallons Per Day

**ACCESSORIES**

Y3012	Healthy Climate 4912 Manual Humidifier Control
Y0656	Aprilaire 60 Digital Automatic Humidifier Control with Outdoor Sensor
Y3760	Healthy Climate Digital Automatic Humidistat
X0285	Healthy Climate 56 40 Automatic Humidifier Control

**Y3432**

**Whole Home Steam Humidifier with Automatic Humidifier Control**



- Available with Automatic Control to keep humidity precisely where it is needed
- Accommodates crawl spaces, attics and areas of the country with milder winters and non-forced air heating
- Runs independently of your HVAC system to accommodate larger homes (up to 6,200 square feet)

X2661

# Humidifier Replacement Pad

- 10 x 13 x 1.75"
- For HCWB3-12 Series, HCWB2-17, HCBW2-17A, HCWB3-17, HCBW3-17A, HCWP2-18, HCWP2-18A, HCWP3-18, HCWP3-18A



## HUMIDIFICATION (Continued)

### ACCESSORIES (Continued)

X7070	Honeywell H7635A2012/U Wall-Mount Humidity Sensor, 24 Volts
Y0657	Aprilaire 4655 Manual Humidifier Control
57N90	Aprilaire 56 Auto-Trac Humidistat Control System

### MAINTENANCE

X2661	Healthy Climate #35 90 Humidifier Replacement Pad, 10" x 13" x 1.75"
X2660	Healthy Climate #10 90 Humidifier Replacement Pad, 9.75" x 10" x 1.75"
Y3482	Healthy Climate CYOS1CHC00 HCSteam Plumbing Steam Cylinder Assembly, 230 Volts, 15 GPD
Y3481	Healthy Climate CYOS1AHC00 HCSteam Plumbing Steam Cylinder Assembly, 110 Volts, 15 GPD
19P70	GeneralAire 990-13 Humidifier Vapor Pad Replacement for Whole-House Elite Humidifiers, 9.75" x 12" x 1.5"
Y3533	Research Products 4640 Scale Control Insert Frame, 10.44" x 11.14" x 3.44"



## HUMIDIFICATION (Continued)

Y3484	Healthy Climate CYOS1DHC00 HCSteam Plumbing Steam Cylinder Assembly, 230 Volts, 15 GPD
19P71	GeneralAire 1099-20 Humidifier Vapor Pad Replacement for Whole-House Elite Humidifiers, 14.25" x 12" x 1.5"
<b>REPAIR</b>	
52P90	Research Products 4040 Aprilaire Solenoid Valve A2012-S118 (24 Volt)
Y6482	Aprilaire 80 Steam Canister for Steam Humidifier Model 800
46X12	Healthy Climate 4291 Solenoid Valve, 24 Volts
X1198	Research Products 45 10" x 12-3/4" x 1-3/4" Replacement Water Panel, 2 Pack
59P94	Research Products 35 10" x 13" x 1-3/4" Water Media
X4200	Research Products 4331 Water Distribution Tray
36N91	Research Products 4223 Drain Spud for Humidifier
21N22	Research Products 4001 Saddle Valve Assembly
22N20	Research Products 4235 Feed Tube and Nozzle
X4412	Research Products 4330 Scale Control Insert
Y2314	Honeywell 5002844-001 TrueSTEAM In-Line Water Filter For Scale And Sediment
52P66	Research Products 10 Water Panel
21N38	Research Products 4246 Water Distribution Tray for 4236 Scale Control Insert
52P69	Research Products 11-1/2" x 14-3/4" x 1-3/4" Replacement Water Panel for Humidifier
46X16	Healthy Climate 4303 Solenoid Valve for WP2-18 Humidifier
Y1766	Research Products 4231 Yellow Orifice, 12 Pack
21N39	Research Products 4236 Scale Control Insert
52P97	Research Products 50 Current Sensing Relay 21-24 VAC, 50-60 Hz, Voltage Range Black
22N21	Research Products 4237 Replacement Motor 115 VAC/60 Hz 0.7 Amps
Y3377	Healthy Climate 102660-01 Humidifier Bypass Cover for HCWB3-17/17A
68P92	Research Products 51 Current Sensing Relay 100-125 VAC, 50-60 Hz, Voltage Range Yellow
Y8922	Maintenance Kit
22N14	Research Products 4004 In-Line Strainer
22N03	Research Products 4010 24V Replacement Transformer
Y8921	Maintenance Kit



Offer valid from January 6th to February 15th, 2025. Spend \$350 on orders of qualifying parts and get a free vest; spend \$1,500 on orders of qualifying parts and receive a 15% immediate discount on these qualifying products, and a free vest. Customer may not combine past or future orders to meet the \$350 or \$1,500 thresholds. Vests are subject to availability and may be reviewed and modified by Lennox in its sole discretion at any time and without notice. Vest cannot be exchanged for cash. The estimated retail value of the Vest is \$20. Limit one (1) vest per eligible order. Future orders are eligible for additional vests during offer term; however, customer may not combine past or future orders to meet the \$350 threshold.

See [www.HeatingPromo.com](http://www.HeatingPromo.com) for a full description of vest. May not be combined with any other offers or discounts; no CDQ pricing. Returns or exchanges of items on the qualifying purchase may result in a reversal or adjustment of the promotional benefits if the qualifying purchase threshold is no longer met. Promotion benefits cannot be cumulated with a warranty claim. Tax and shipping are not included in the amount used to determine discount amount. Offer valid only on qualifying SKUs as listed on [www.LennoxPros.com](http://www.LennoxPros.com). All qualifying products are subject to availability on a first-come, first-served basis; stock levels vary by location and not all stores stock each qualifying SKU. Transactions may be made in-store or online. ORC=PS2. Promocode: "WINTER15". All stated amounts for purchase thresholds are in the appropriate national currency.

**US Only:** Vests are not available for in-store pickup. All earned vests will be shipped only once eligibility and qualifying order has been verified - including, but not limited to, only after customer uploads the qualifying order number as proof of purchase to [www.HeatingPromo.com](http://www.HeatingPromo.com) and indicate their name, email address, and address of shipment. Allow approximately 2 weeks after upload of order number for receipt of reward item. Customer is responsible for making sure contact information is current and accurate. Receipts must be received by 2/21/2025 or vests will be forfeited.

**Canada Only:** Customer is responsible for picking up the earned reward item at a pre-chosen Lennox Store. All earned vests will be available for pick up in Lennox Stores after April 1st, 2025. Vests will be shipped only once eligibility and qualifying order have been verified - including, but not limited to, only after customer uploads the qualifying order number as proof of purchase to [www.HeatingPromo.com](http://www.HeatingPromo.com) and indicate their name, email address, and the Lennox Store selected for pick up. Receipts must be received by 2/21/2025 or vests will be forfeited. Vests not picked up by customer from the selected Lennox Store by 04/30/2025 will be forfeited by customer.

Service Experts, NAS, Residential National Accounts, ARS, Parts Dealers and Home Warranty do not qualify for this offer. Valid in the U.S. and Canada. Promotion is subject to change or cancellation without notice.

FOR MORE INFORMATION, SEE STORE ASSOCIATE OR GO TO [www.LennoxPros.com/Stores/Promotions](http://www.LennoxPros.com/Stores/Promotions)

