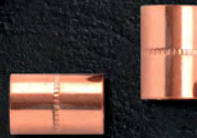
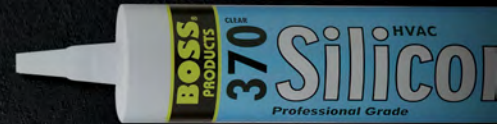
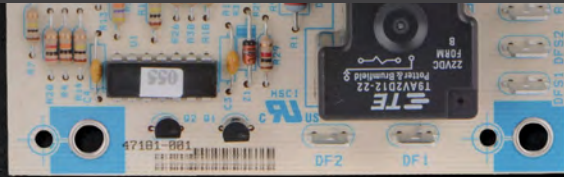




# 2022

# PARTS & SUPPLIES

## Quick Reference Guide



# CONTENTS

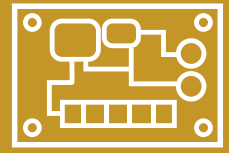
**CHEMICALS  
ADHESIVES  
TAPES  
SEALANTS**



**DUCTING**



**ELECTRICAL**



**EQUIPMENT  
PAD**



**FITTINGS**



**INSTALL ITEMS**



**PUMPS**



**THERMOSTATS**



**TOOLS**



**UNIVERSAL  
PARTS**



**C.A.T.S**

**CHEMICALS**

**CLEANERS &  
DEGREASERS**

**ADHESIVES**

**OILS &  
LUBRICANTS**

**TAPE**

**SEALANTS**



# CHEMICALS CLEANERS & DEGREASERS ADHESIVES | OILS & LUBRICANTS TAPE | SEALANTS

## NU CALGON 4300-09 RX11-FLUSH 1LB CANISTER

Engineered for flushing refrigeration and air conditioning systems. Ideal for system flushing after burnouts, retrofits and for flushing line sets for R-410A conversions.

**BUY X7870**



### PRODUCT

CAT#

#### CHEMICALS

OrangeAir OdorNeutralizer 1/2lb	Y7006
Mold and Mildew Remover/Disinfectant, 32oz	X0121
Condensate Pan Treatment, 6oz Clamshell	Y5690

*Continued On Next Page*



PRODUCT	CAT#
<b>CHEMICALS (CONTINUED)</b>	
Condensate Pan Treatment, 200 Tablets/Jar Asurity Pro-Treat 217	X6864
Condensate Pan Treatment, 200 Tablets/Jar Asurity Flow Plus 200	Y7769
Acid Away Compressor Burnout Acid Neutralizer, 4oz Bottle	85P95
Acid Away for POE Compressor Burnout Acid Neutralizer, 4oz Bottle	Y6626
Wasp and Hornet Killer, 16oz aerosol	19P45
Connect Injector Tool	18D35
RX11-Flush 1lb cannister (3-4 ton systems)	X7870
RX11-Flush 2lb cannister (5-7 ton systems)	X7871

*Continued On Next Page*

## DIVERSITECH COIL CLEANER PRO-BLUE ALKALINE FOAMING GL

Pro-Blue™ is a heavy foaming alkaline-based solution that penetrates dirt and grease, removing deposits, resulting in clean and brightened coils. It is biodegradable and NSF approved.

**BUY 19P43**





## OATEY 30891, PVC RAIN-R-SHINE BLUE CEMENT, 8 OZ.

Use on all schedules and classes of PVC pipe and fittings up to 6" diameter with interference fit.

**BUY 44N97**



## RITCHIE 69562 4OZ OIL INJECTOR

Adds oil or UV dye to system with ease. Easy connection to the manifold hose.

**BUY Y6630**

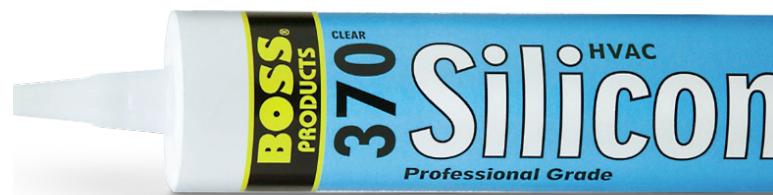
PRODUCT	CAT#
<b>CHEMICALS (CONTINUED)</b>	
Rx-Flush Starter Kit, 1lb	Y3363
Pro-Flush 16oz Refill Can	Y2925
Pro-Flush Kit, 8oz Kit	Y2926
<b>ADHESIVES</b>	
ABS to PVC Transition Green Cement, 4oz Dauber Top Can	X4150
Contact Adhesive Spray - 635C 12oz aerosol	66P57
Rain-R-Shine Medium Blue PVC Cement, 8oz Dauber Top Can	44N97
Heavy-Duty Clear PVC Cement, 16oz Dauber Top Can	64P37

PRODUCT	CAT#
<b>CLEANERS/DEGREASERS</b>	
Evap-Foam Coil Cleaner, 18oz aerosol	37X95
Evap-Fresh No Rinse 18oz aerosol	Y7000
A/C RE-NEW R410A 4oz aerosol	Y2692
Evap Pow'r-C 1gal bottle	Y8575
Pro-Brown, Heavy-Duty Outdoor Coil Cleaner, 1gal bottle	Y8702
Pro-Blue, Foaming Alkaline Coil Cleaner, 1gal bottle	19P43
Cal-Green 1gal bottle	Y8574
Cal-Brite 1gal bottle	Y8570
Cal-Blue Plus 1gal bottle	Y8573
Triple-D, Medium-Duty Coil Cleaner, 1gal bottle	X0681
Clean Connect Sprayer	18D30
<b>OILS/LUBRICANTS</b>	
Pull-A-Spout Oiler, 4 oz.	49P70
SuperEvac Premium, Vacuum Pump Oil, 1qt	19P47
Hydro Balance, Vacuum Pump Oil, 1gal	19P48
Yellow Jacket 69562, Dye and Oil Injector, 4oz	Y6630

**BOSS 370  
 HVAC CLEAR SILICONE  
 SEALANT, 10.1 OZ.**

Suitable for general heating, ventilation and air conditioning sealing and adhesive applications. Seal cracks or gaps around windows, vents, ducts, fixtures and lights.

**BUY 55P98**



PRODUCT	CAT#
<b>TAPE</b>	
Aluminum Foil Tape Cold Temperature, 2" x 50 yd.	Y3023
Aluminum Foil Tape Cold Temperature, 3" X 50 yd.	Y3025
Aluminum Foil Tape, 2-1/2" x 60 yd., Silver Printed	18P35
Aluminum Foil Tape, 63.5mm x 55m, Silver Printed	22F41
Aluminum Foil Tape, 3" x 60 yd., Silver Printed	17P90
Aluminum Foil Tape, 72mm x 55m, Silver Printed	22F42
Foil/Scrim/Kraft (FSK) Tape, 3" x 50 yd.	Y3026
Butyl Mastic Foil Tape, 2" x 100', Silver Printed	46X82
Butyl Mastic Foil Tape, 3" x 100', Silver Printed	33N63
Cloth Duct Tape, 2" X 60 yd., Black Performance Grade	18P34
Cloth Duct Tape, 2" x 60 yd., Black Printed	34X01
Cork Insulation Tape, 1/8 x 2" x 30'	64P32
Duct Tape, 2" x 120 yd., Metallic Printed	X0290
Duct Tape, 2" X 60 yd. Silver Metal Printed Cloth	X1775
Electrical Tape, 3/4" X 66', Black	16P93
Electrical Tape, 3/4" x 66', Black, Professional Grade	Y9989
Foam Tape, 1/8 x 2" x 30'	64P33



**BOSS 33420, 334  
 EXPANDING FOAM,  
 20 OZ**

Ready to use polyurethane foam, formulated to expand to generate an effective seal, and when used properly is proven not to distort or bow window and door frames.vents, ducts, fixtures and lights.

**BUY Y8699**





## SHURMASTIC SF 686 UL LISTED-PRINTED BUTYL FOIL TAPE, 3" X 100', SILVER PRINTED

Foil tape used for airtight and moisture-free sealing of Class 1 Flex Duct, sheet metal and duct wrap vapor barriers, and is also approved for subgrade application on PVC-coated ducts, fixtures and lights.



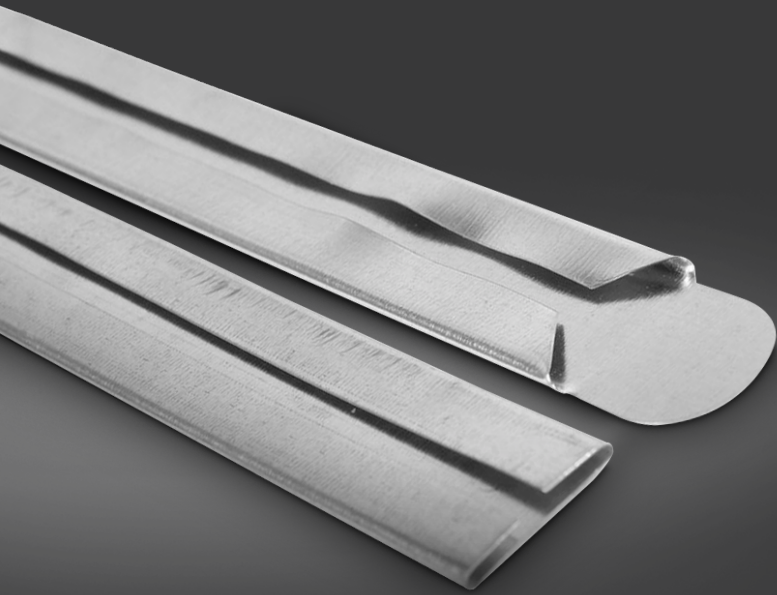
**BUY 33N63**

PRODUCT	CAT#
<b>SEALANTS</b>	
A/C Easy Seal 3oz can Nu Calgon 4050-06	Y3365
EasySeal Direct Inject Nu Calgon 4050-08	Y6998
EasySeal Direct Inj - UV Dye Nu Calgon 4050-11	Y9622
Flex Inject Hose Advanced Leak Sealant, 0.3oz	Y8701
Thumb-Gum Sealing Compound, 2lb	83B09
White Multi-Seal 125, 10oz Cartridge BOSS 12501	18D42
White Silicone Sealant, 10.1oz Cartridge BOSS 37001	55P99
Aluminum Multi-Seal 125, 10oz Cartridge BOSS 12513	18D44
Aluminum Silicone Sealant, 10.1oz Cartridge BOSS 37003	45P55
Clear Silicone Sealant, 10.1oz Cartridge BOSS 37000	55P98
Translucent Multi-Seal 125, 10oz Cartridge BOSS 12522	18D43
Red Hi-Temp HVAC/R Silicone Sealant, 10.1oz Cartridge BOSS 37610	83P03
Red Firestop, 10oz Cartridge BOSS 81610	18D52
Polyurethane Expanding Foam Pressrizd Can, 12oz, BOSS 33316	58P95
Polyurethane Expanding Foam Pressrizd Can, 20oz BOSS 33420	Y8699
Pink Fire Block Foam Pressrizd Can, 20oz BOSS 81221	Y8698
Clear Silicone Pressrizd Can, 10z BOSS 37008	18D50
Red Silicone Sealant, Hi-Temp HVAC/R, 8oz BOSS 37608	18D51
White Duct Sealant 1 GAL Code# CCWI-181	75X52
Grey Duct Sealant 1 GAL Code# CCWI-181	X1852





# DUCTING



## LUKJAN DRIVE CLEATS 5'

60", drive, sheet metal duct cleat.

[BUY 54N84](#)

PRODUCT	CAT#
<b>DUCTING</b>	
Drive Cleats, 8" Length	54N82
Drive Cleats, 10" Length	54N83
Drive Cleats, 60" Length	54N84
Joist Panning Sheets, 16" x 30", 30 GA	51N25
Joist Panning Sheets, 32" x 30", 30 GA	51N26



# ELECTRICAL

**DISCONNECT  
BOX**

**ELECTRICAL  
BOXES**

**FUSES**

**HARD  
START KITS**

**MISC**

**WHIPS**

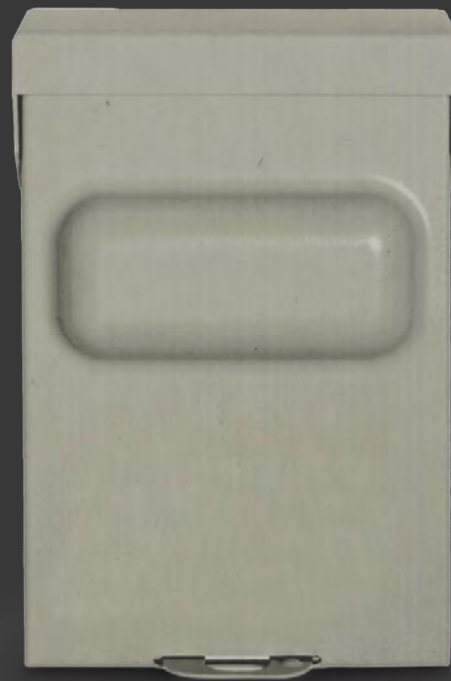


# DISCONNECT BOX ELECTRICAL BOXES FUSES | HARD START KITS SURGE PROTECTORS | WHIPS

## MARS 83385, DISCONNECT

60 Amp non-fused, single  
phase, 240v.

BUY 27P39



PRODUCT	CAT#
<b>DISCONNECT BOX</b>	
Top Door, 60A Non-Fused Disconnect, 1-Phase, 240V, Metallic	27P39
Side Door, 60A Non-Fusible Low-Profile Disconnect Switch	Y9687
Side Door, 60A Non-Fusible Disconnect Switch	Y9686
Side Door, 30A Fusible Pullout Disconnect Switch	Y9684
Side Door, 60A Fusible Pullout Disconnect Switch	Y9685





## BRAMEC ELECTRICAL OUTLET BOX

Standard steel utility (handy) electrical outlet box, 2-1/8" deep, 1/2" k.o.

**BUY 64P71**

## BRAMEC 16121 FLAT BLADE FUSE

Bramec 16121 flat blade fuse.  
ATC 5, 5 amps, 32 volts.

**BUY 77N79**

PRODUCT	CAT#
<b>ELECTRICAL BOXES</b>	
Flat Two Duplex Receptacle Electric Box Cover	49P92
Handy Box Cover, Toggle Switch	49P93
Flat Blank Electric Box Cover	49P94
Duplex Receptacle, 15A, 125V, NEMA 5-15R, Ivory	85N42
Steel Electrical (Handy) Box, 1-1/2" Deep, 1/2" K.O.	83P73
Steel Electrical (Handy) Box, 1-7/8" Deep, 1/2" K.O.	49P91
Steel Electrical (Handy) Box, 2-1/8" Deep, 1/2" K.O.	64P71
4" x 4", 1-1/2" Deep 1/2" K.O.'s	86N67
4" Square Box Cover, 1 Toggle, 1 Duplex	85N43
4" Square Electrical Outlet Box, 1-1/4" Deep, 1/2" K.O.s	83P74
4" Square Box Extension Ring, 1/2" Deep, 1/2 & 3/4" K.O.s	64P72
Power Supply Cord, 16 AWG x 6', Right Angle 5-15P Plug	Y4206



## CPS CSRU1 3 WIRE HARD START KIT 1-3 TON

The 5-2-1® uses a powerful multi-layer starting capacitor and a smart switch that gives the compressor the boost it needs to start up quickly and draw less power.

[BUY X4483](#)

## GLOBAL DTK-120/240CM+ SURGE PROTECTOR

HVAC condensing unit surge protector, SPD type 2, -40°F - 185°F.

[BUY Y6996](#)



### PRODUCT

### CAT#

#### FUSES

Flat Blade Fuse, Automotive Style, 32 Volts, 3 Amps

77N78

Flat Blade Fuse, Automotive Style, 32 Volts, 5 Amps

77N79

Fuse Testing Superkit (6 pcs)

18D81

#### HARD START KITS

Super Boost Hard Start Capacitor Kit, 43 - 53 MFD Capacitor, 90-277 VAC

Y8806

*Continued On Next Page*



PRODUCT	CAT#
<b>HARD START KITS (CONTINUED)</b>	
Ultra Start Hard Start Kit with Start Capacitor, 3.5-5 HP, 208-265 VAC	Y8809
5-2-1 Hard Start 1 to 3 Ton A/C Units, 3 wire	X4483
5-2-1 Hard Start 3.5 to 5 Ton A/C Units, 3 wire	X4484
5-2-1 Hard Start 4 to 5 Ton A/C Units, 3 wire	X5076
Turbo Easy-Start, Universal Hard-Start Kit, 1 to 5 Ton	18D39

**BRAMEC 18829 NON-METALLIC WHIP,  
3/4" X 6', 8 GA THHN WIRE**

Each whip comes assembled and individually bagged with hanging hole. The wire is provided in 3 distinct colors for ease of hook-up. Saving time & effort in wiring air conditioner condenser units.

**BUY 46N89**





PRODUCT	CAT#
<b>WHIPS</b>	
1/2", 4', 10GA, Non-Metallic, Bramec	36P47
1/2", 4', 10GA, Metallic, Diversitech	26P86
1/2", 6', 10GA, Non-Metallic, Bramec	36P48
1/2", 6', 10GA, Metallic, Bramec	29P54
3/4", 6', 8GA, Metallic, Bramec	27P44
3/4", 6', 8GA, Non-Metallic, Diversitech	35P57
3/4", 6', 8GA, Non-Metallic, Bramec	46N89
<b>MISC</b>	
3/8" Romex Connector for 1/2" knockouts	49P90
75-Piece Serviceman's Terminal Kit in Plastic Box	98P24
Term-Lok 70N8001 Triple Wire Kit, 10 Gauge	70N80
Surge Protector, HVAC Condensing Unit, 120/240VAC, MCOV: 150V/300V, Voltage Protection Rating: 700V L-G, 1200V L-L	Y6996
Universal Air Pressure Switch .10" to 10" WC	Y8802
Adjustable Air Pressure Switch 1"-4" WC	Y8805
Orange, #22 to #14 AWG, 600 Volts, 100/pkg	64P50
Blue Screw-On, #22 to #16 AWG, 300 Volts, 100/pkg	49P96
Yellow Screw-On, #18 to #10 AWG, 600 Volts, 100/pkg	64P51
Red Screw-On, #18 to #10 AWG 600 Volts 100/pkg	64P52



# EQUIPMENT PAD

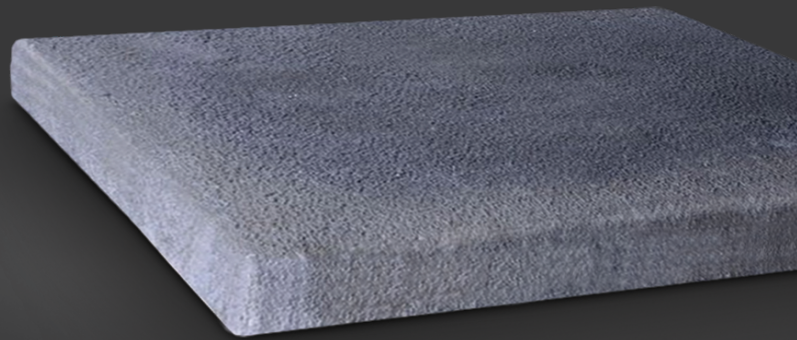


# CONCRETE | PLASTIC

## DIVERSITECH ULTRALITE LIGHTWEIGHT CONCRETE EQUIPMENT PAD

Strengthened by miles of fiber, UltraLite® allows the pad to flex instead of cracking or breaking. The textured surface prevents the unit from sliding, and allows water drainage.

[BUY 81P78](#)



### PRODUCT

### CAT#

#### PLASTIC

24 x 24 x 2", E-Lite Plastic Equipment Pad	70X43
30 x 30 x 2", E-Lite Plastic Equipment Pad	70X45
32 x 32 x 2", E-Lite Plastic Equipment Pad	19Q01
36 x 36 x 2", E-Lite Plastic Equipment Pad	56X06
36 x 36 x 3", E-Lite Plastic Equipment Pad	70X50
36 x 40 x 2", E-Lite Plastic Equipment Pad	56X14
36 x 48 x 3", E-Lite Plastic Equipment Pad	59X79





# FITTINGS

**BRASS**

**BLACK IRON**

**COPPER**

**PVC**



# BLACK IRON | COPPER | PVC

## BLACK IRON PIPE NIPPLE, 1/2 X 1-1/2"

BUY 12Y87



PRODUCT	CAT#
<b>BRASS</b>	
Valve Core, Pack of 6	81B77
Flare Cap for 1/4", Pack of 12	81B61
Swivel Tee w/Permanent Depressor, 1/4" Access on Run x 1/4" Female Flare w/Depressor on Female Swivel Branch End (3 PACK)	81B69
Swivel Tee w/Permanent Depressor, 1/4" Access on Run x 1/4" Female Flare w/Depressor on Female Swivel Branch End, Pack/3	81B64
Swivel Tee w/No Depressor, 1/4" Access on Run x 1/4" Access on "T", Female Swivel on Run, Pack/3	81B67
<b>BLACK IRON</b>	
1/2 x 1-1/2" Black Iron Nipple	12Y87
1/2 x 2-1/2" Black Iron Nipple	12Y89
1/2 x 3" Black Iron Nipple	12Y90
1/2 x 3-1/2" Black Iron Nipple	12Y91

*Continued On Next Page*



PRODUCT	CAT#
<b>BLACK IRON (CONTINUED)</b>	
1/2 x 4-1/2" Black Iron Nipple	12Y93
1/2 x 5" Black Iron Nipple	12Y94
1/2 x 5-1/2" Black Iron Nipple	12Y95
3/4 x 1-1/2" Black Iron Nipple	13Y03
3/4 x 3" Black Iron Nipple	13Y06
3/4 x 5" Black Iron Nipple	13Y10
1/2 x 1-1/2" Black Iron Nipple (5 PACK)	Y7324
1/2 x 2" Black Iron Nipple(5 PACK)	Y7322
1/2 x 2-1/2" Black Iron Nipple (5 PACK)	Y7325
1/2 x 3" Black Iron Nipple (5 PACK)	Y7323
1/2" Close Black Iron Nipple (5 PACK)	Y7320
1/2" Coupling, FIP x FIP (5 PACK)	Y7317
1/2" Black Iron Cap (5 PACK)	Y7319
1/2 x 1/2" 45 Elbow, FIP x FIP(5 PACK)	Y7328
1/2 x 1/2" 90 Elbow, FIP x FIP (5 PACK)	Y7316
1/2 x 1/2" 90 Deg Street Elbow (5 PACK)	Y7326
1/2 x 1/2 x 1/2" Tee (5 PACK)	Y7318
3/4 x 1/2" Reducing Coupling (5 PACK)	Y7327
3" x 2" Reducing Coupling, Soc x Soc	Y7321



**COPPER FITTINGS,  
COUPLING  
1/2(5 PACK)**

**BUY Y7085**



PRODUCT	CAT#
<b>COPPER</b>	
3/8" Coupling (5 PACK)	Y7059
3/8" Elbow 90 (5 PACK)	Y7078
3/8" Elbow ST90 (5 PACK)	Y7082
1/2" Coupling (5 PACK)	Y7085
1/2" Elbow 45 (5 PACK)	Y7097
1/2" Elbow 90 (5 PACK)	Y7104
1/2" Elbow LR90 (5 PACK)	Y7089
1/2" Flare Nut (5 PACK)	Y7105
1/2 X 1/2" Connector (5 PACK)	Y7108
5/8" Coupling (5 PACK)	Y7076
5/8" Elbow 45 (5 PACK)	Y7093
5/8" Elbow ST45 (5 PACK)	Y7091
5/8" Elbow 90 (5 PACK)	Y7092
5/8" Elbow ST90 (5 PACK)	Y7101
5/8" Elbow LR90 (5 PACK)	Y7079
5/8" Elbow ST90LR (5 PACK)	Y7084
5/8 X 1/2" Coupling (5 PACK)	Y7111
5/8 x 3/4" Coupling (5 PACK)	Y7081
3/4" Elbow 45 (5 PACK)	Y7073
3/4" Elbow ST45 (5 PACK)	Y7069
3/4" Elbow 90 (5 PACK)	Y7075
3/4" Elbow ST90 (5 PACK)	Y7074
3/4" Elbow LR90 (5 PACK)	Y7061
3/4" Elbow ST90LR (5 PACK)	Y7063
7/8" Coupling (5 PACK)	Y7062
7/8 x 3/4" Coupling (5 PACK)	Y7068
7/8 X 3/4" Fitting Reducer (5 PACK)	Y7090

*Continued On Next Page*





**PVC 10 PACK  
 SCHEDULE 40 ADAPTER  
 3/4"MIPTX3/4"SOC**

**BUY Y4683**



PRODUCT	CAT#
<b>COPPER (CONTINUED)</b>	
7/8" Elbow 90 (5 PACK)	Y7071
7/8" Elbow 45 (5 PACK)	Y7072
7/8" Elbow ST45 (5 PACK)	Y7070
7/8" Elbow ST90 (5 PACK)	Y7077
7/8" Elbow ST90LR (5 PACK)	Y7064
7/8" Elbow LR90 (5 PACK)	Y7065
1-1/8" Coupling (5 PACK)	Y7087
1-1/8" Elbow 45 (5 PACK)	Y7099
1-1/8" Elbow LR90(5 PACK)	Y7080
1-1/8" Elbow ST90LR (5 PACK)	Y7086
1-1/8" Elbow ST45 (5 PACK)	Y7103
1-1/8 X 7/8" Fitting Reducer (5 PACK)	Y7088
1-1/8 X 7/8" Coupling (5 PACK)	Y7083
<b>PVC</b>	
1" 90 Deg Street Elbow, MPT x Soc	88B24
2" Coupling, Soc x Soc	66P21
2 x 1-1/2" Reducing Coupling, Soc x Soc	66P22
2" 90 Deg Elbow, Soc x Soc	66P12

*Continued On Next Page*



PRODUCT	CAT#
<b>PVC (CONTINUED)</b>	
2" Coupling, H x H	99P60
2" 45 Deg Elbow, Soc x Soc	66P16
2" 45 Deg Street Elbow SPIG xH	20N67
2" 45 Deg Elbow, H x H	99P62
2" 90 Deg Elbow, H x H	99P63
2" 90 Deg Street Elbow H x SPIG	20N66
2" 90 Deg Elbow Longturn H x H	99P64
3" 45 Deg Street Elbow, H x SPIG	21N01
3" Coupling, SOC x SOC	66P23
3" Coupling, H x H	99P68
3" 90 Deg Street Elbow, H x SPIG	21N00
3" x 2" Reducing Coupling, Soc x Soc	99P67
3" 45 Deg Elbow Soc x Soc	66P18
3" 45 Deg Elbow H x H	99P70
3" 90 Deg Elbow H x H	99P71
3" 90 Deg Long Bend Elbow, H x H	99P72
3/4" Coupling, Soc x Soc (10 PACK)	Y4679
3/4" Male Adapter, Mpt x Soc (10 PACK)	Y4683
3/4" 45 Deg Elbow, Soc x Soc, (10 PACK)	Y4678
3/4" 90 DEG SOC (10 PACK)	Y4677
3/4" Cap, Soc (10 PACK)	Y4682
3/4" Tee, Soc x Soc x Soc (10 PACK)	Y4676
3/4 x 3/4" Adapter, Sox x Fpt (10 PACK)	Y4680
3/4" 90 Deg Street Elbow, Spg x Spg (10 PACK)	Y4681
3/4" 45 Deg Elbow, Soc x Soc, (50 PACK)	24B99
3/4" 90 Deg Elbow, Soc x Soc, (50 PACK)	24B97
3/4" Male Adapter, MPT x Soc, (50 PACK)	24C05
3/4" Cap, Soc, (50 PACK)	24C04



PRODUCT	CAT#
<b>PVC (CONTINUED)</b>	
3/4" Tee, Soc x Soc x Soc, (50 PACK)	24B96
3/4" Coupling, Soc x Soc, (100 PACK)	24C01
3/4" Female Adapter, FPT x Soc, (50 PACK)	24C02
3/4" 90 Deg Street Elbow, FPT x MPT, (50 PACK)	24C03
1" Coupling, Soc x Soc, (50 PACK)	24C09
1" 90 Deg Elbow, Soc x Soc, (50 PACK)	24C08
1" Male Adapter, MPT x Soc, (50 PACK)	24C10
1" Tee, Soc x Soc x Soc, (50 PACK)	24C07
2" Coupling, Soc x Soc, (25 PACK)	24B95
2" 45 Deg Elbow, Soc x Soc, (50 PACK)	24B91
2" 90 Deg Elbow, Soc x Soc, (50 PACK)	24C06
3/4" x 10' SCHEDULE 40 PVC Cell Core Plain End	47X21
3/4" x 10' SCHEDULE 40 PVC Cell Core Belled End	68B34
2" x 10' SCHEDULE 40 PVC Cell Core	79P13
2" x 10' SCHEDULE 40 PVC	99P55

## 1" 90 DEG ELBOW, SOC X SOC, (50 PACK)

BUY 24C08



# INSTALL ITEMS

**FLOOD DETECTOR  
& T-SWITCH**

**VINYL TUBING**

**TXV**

**CONDENSOR  
COVER, RISER  
AND FASTENERS**

**CABLE TIES**



# CONDENSATOR COVER, RISER AND FASTENERS | FLOOD DETECTOR & T-SWITCH | VINYL TUBING | TXV | CONDENSATOR COVER, RISER AND FASTENERS | FASTENERS | CABLE TIES | FLOOD DETECTOR & T-SWITCH | CONDENSATOR COVER

## DIVERSITECH WS-1 MOISTURE SENSING SWITCH

24 VAC wet switch flood detector 50/60 hz.

BUY 92N10

## VINYL TUBING 5/8" ID X 100' ROLL

Clear vinyl tubing, 5/8" I.D. X 100' roll.

BUY 47N01



PRODUCT	CAT#
<b>CABLE TIES</b>	
Diversitech WTB11C Cable Tie, Blk, 11" (100PK)	47N11
Diversitech 7-P36 Cable Ties NAT 36" 175 (50pk)	Y6892
<b>FLOOD DETECTOR &amp; T-SWITCH</b>	
24 VAC Wet Switch Flood Detector	92N10
3/4" Inline A/C Condensate Drain Pan Overflow Kit Rectorseal Safe-T-Switch SS2	91X57
3/4" Close Coupled Condensate Drain Pan Overflow Kit Rectorseal Safe-T-Switch SS2	91X58





## SPORLAN RCZE-2-GA TXV VALVE ADJ R410A

RCZE-2-GA kit, 2 ton, 3/8 x 1/2 ODF solder, 1/2" chatleff & 1/2" aero-style adapters included, R-410A.

**BUY Y0498**

PRODUCT	CAT#
<b>TXV</b>	
Sporlan RCZE-2-GA TXV VALVE ADJ R410A	Y0498
Sporlan RCZE-3-GA TXV VALVE ADJ R410A	Y0499
Sporlan RCZE-4-GA TXV VALVE ADJ R410A	Y0500
Sporlan RCZE-5-GA TXV VALVE ADJ R410A	Y0501
<b>VINYL TUBING</b>	
Bramec VINYL TUBING 3/8"ID X 100' ROLL	46N99
VINYL TUBING 1/2"ID X 100' ROLL	47N00
VINYL TUBING 5/8"ID X 100' ROL	47N01

PRODUCT	CAT#
<b>CONDENSOR COVER, STRAP, RISER AND FASTENERS</b>	
Brinmar 0622AP CONDENSOR COVER XC21/XC25	X6549
2ZT ZIP-IN SCREWS 1000 PKG	13P12
EMT Fittings Strap One Hole 1/2" Use to Join EMT Conduit to Boxes on Enclosures	49P52
31" Hanging Strap 1" wide	81B15
Anti-Vibration Pad, 2 x 2 x 7/8"	75X93
Bramec 4005 PUMP UP 3"	49P72
Bramec 4008 PUMP UP 6"	94P72
Furnace Mounting Block, 2" H	98X19

*Continued On Next Page*



## **BRINMAR 0622AP CONDENSOR COVER XC21/XC25**

Brinmar 0622AP condensor covers help protect your A/C condensing unit in the winter. It reduces maintenance costs and improves energy efficiency. Prolongs the life of condensing unit and reduces cabinet fading.

**BUY X6549**

**DIVERSITECH 7-P36  
CABLE TIES NAT 36"  
175 (50PK)**

Cable tie 175lb 36" natural  
all-nylon 50 per bag -  
50/bag

**BUY Y6892**

**BRAMEC 13730 11"  
BLK STANDARD  
CABLE TIES (100PK)**

Bramec 13730 11" black standard  
wire tie - 100 packs, 3" dia. X  
50 lbs.

**BUY 47N11**





### **BRAMEC 4005 PUMP UP 3"**

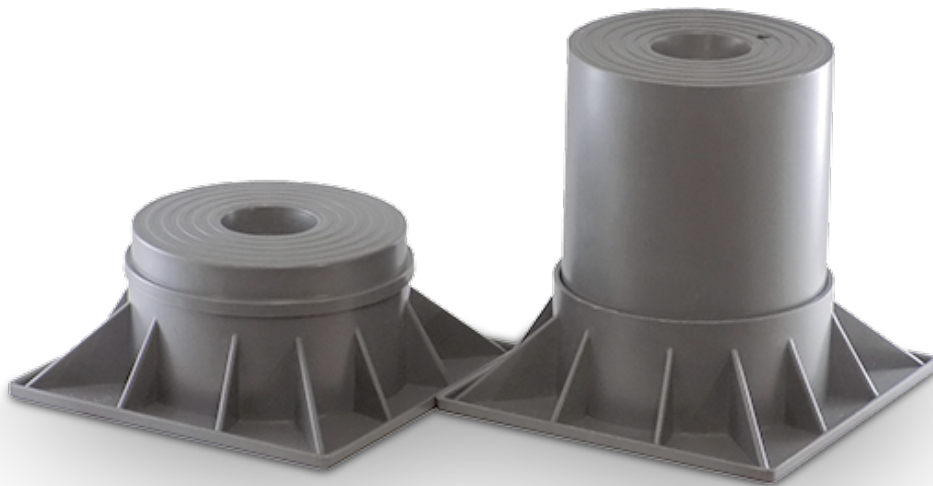
3" Concrete gray pump-up.

**BUY 49P72**

### **BRAMEC 4008 PUMP UP 6"**

6" Concrete gray pump-up.

**BUY 94P72**



### **MALCO SHEET METAL SCREWS, HW8X1/2ZT ZIP-IN SCREWS 1000 PKG**

1/4" Head zip-in screw, zinc plated, 8" x  
1/2" screw, 1000 pkg

**BUY 13P12**



**PUMPS**

**PARTS**

**CONDENSATE PUMPS**

**VACUUM PUMP**



# CONDENSATE PUMPS VACUUM PUMP

## LITTLE GIANT VCMA-20ULS 115 CP PUMP (554425)

Comes with a 1/30 hp high performance motor. 1/2 gallon tank capacity, 3 inlet drain holes and is thermal overload protected.

**BUY 19N61**



### PRODUCT

CAT#

### PARTS

Magnetic Float Switch for Metal & Plastic Secondary Drain Pans, High Capacity 5 Amp, 24Volt AC Sensor	Y0619
Auxiliary Condensate Overflow Safety Switch, 72" Wire, 48 VAC/VDC, 5 Amps	76N63
Condensate Switch Clip Diversitech	22J88
Condensate Switch Elbow Diversitech	22J97



PRODUCT	CAT#
<b>CONDENSATE PUMPS</b>	
Low-Profile Condensate Pump, 115V, Plenum Series	22V14
1/50 HP Condensate Pump, 115 Volt	50E38
1/50 HP Condensate Pump with Safety Switch, 115 Volt	50E39
1/30 HP Low Profile Condensate Pump with Safety Switch, 115 Volt	19N57
1/30 HP Condensate Pump with Safety Switch, 115 Volt	19N61
1/30 HP Condensate Pump with Safety Switch, 230 Volt	19N62
Condensate Pump with 20' Tubing. 120 Volt	X7234
Mini-Split Condensate Pump, 110-240 Volt	Y8793
Mini-Split Condensate Pump, 120/230V 50/60 HZ	Y5170

## LITTLE GIANT 554405 VCMA-15ULS, 1/50 HP CONDENSATE PUMP WITH SAFETY SWITCH, 115 VOLT

The VCMA-15 Series with a 1/50 hp pump is great for collecting, detecting, and removing condensation from air conditioners. Its robust design is also suitable for high-efficiency gas furnace condensation and condensing boilers.

**BUY 50E39**



PRODUCT

CAT#

VACUUM PUMP

Vacuum Pump, 5 CFM, 1/2 HP, 120 Volt Hilmor 1948121

Y8536

## **HYCO METALS 1948121 VP5 VACUUM PUMP 5 CFM**

Features two durable hoist points that allow you to transport your vacuum pump with ease. Drains oil quickly and has easy access to a large oil fill port.

**BUY Y8536**



# THERMOSTATS

**LENNOX**

**NEST**

**ECOBEE**

**HONEYWELL**

**WHITE RODGERS**

**T-STAT WIRE**

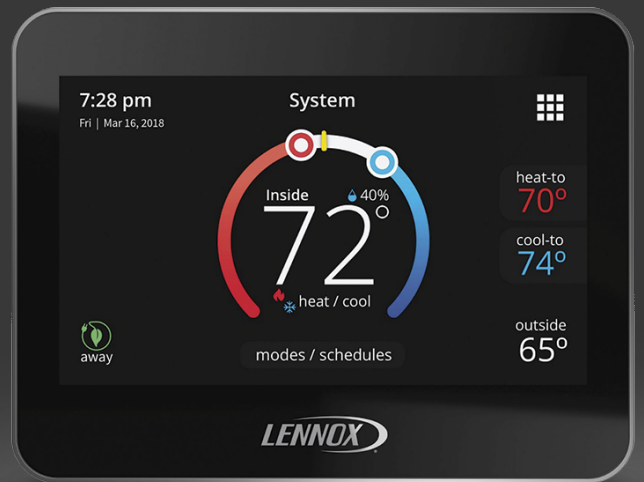


# WHITE RODGERS | HONEYWELL | LENNOX | NEST | WHITE NEST | ECOBEE | HONEYWELL | LEN WHITE RODGERS | T-STAT WIRE

## LENNOX M30 UNIVERSAL SMART PROGRAMMABLE THERMOSTAT, 4.3" DISPLAY

A Wi-Fi-enabled, electronic 7-day, multi-stage, programmable, touchscreen thermostat. Works with non-iComfort enabled and non-Lennox products.

**BUY 15Z69**



PRODUCT	CAT#
<b>LENNOX</b>	
Lennox COMFORTSENSE 3000 L3011C	51M32
Lennox COMFORTSENSE 3000 L3021H	51M33
Lennox COMFORTSENSE 3000 L3511C	51M34
Lennox COMFORTSENSE 3000 L3522C	51M35
Lennox COMFORTSENSE 3000 L3532U	51M37
Lennox ComfortSense 5500 Thermostat, 1-Heat / 1-Cool, Conventional Heating	13H13
Lennox Comfortsense 7500 Thermostat, 7 Day Program, 4-Heat / 2-Cool, Universal	13H14
Lennox M30 Universal Smart Programmable Thermostat, 4.3" Display	15Z69

*Continued On Next Page*



### NEST T3008US LEARNING THERMOSTAT

Control the temperature from your phone, tablet or laptop. Nest learns the temperatures you like and programs itself in about a week. Automatically turns itself down when nobody's home.

**BUY Y8234**

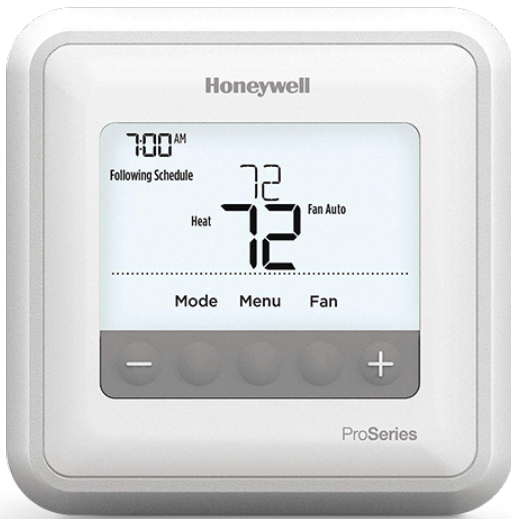
### ECOBEE THERMOSTAT, EB-STATE3LTP-02, 3LITE

Equipped with the essential features to start saving you up to 23%\* annually on heating and cooling.

**BUY Y9907**

PRODUCT	CAT#
<b>LENNOX (CONTINUED)</b>	
Lennox E30 Universal Smart Programmable Thermostat, 7" Display	20A65
Lennox S30 Ultra Smart Programmable Thermostat, 7" Display	12U67
iComfort S30 3.0	19V30
Lennox Thermostat Outdoor Temp Sensor	X2658





## HONEYWELL TH4110U2005/U T4 PRO THERMOSTAT

Streamlines everything from product selection and installation to customer service and support. Up to 1 Heat / 1 Cool Heat Pumps; Up to 1 Heat / 1 Cool Conventional Systems.

**BUY Y8716**

PRODUCT	CAT#
<b>ECOBEE</b>	
Ecobee Thermostat, EB-STATE5P-01, SmartThermostatPro US	17Y95
Ecobee Thermostat, EB-STATE3LTP-02, 3lite	Y9907
<b>HONEYWELL</b>	
T1 Pro Non-Programmable Thermostat, 1H/1C Heat Pump, 1H/1C Conventional TH1110D2009/U	Y9632
Honeywell YTH6320R1001/U WIRELESS FOCUST'STAT P	Y2056
Honeywell C7189R1004/U Wireless Indoor Sensor	Y4671
Honeywell TH8110R1008 VisionPro RedLink 1H1C	Y5655
Honeywell TH8320R1003 VisionPro RedLink 3H2C	Y5656
Honeywell TH9320WF5003/U Wi-Fieldpiece 9000 3H2C	Y6075
Honeywell TH8321R1001 VisionPro IAQ PROGM 3H/2C	Y6547
Honeywell THX9421R5085WW Prestige IAQ Kit	Y6955
Honeywell TH8321WF1001 VP8000 Wi-Fi	Y7009
Honeywell TH8732WFH5002 LYRIC WIFieldpiece HOMEKIT	Y8247
Honeywell TH6220WF2006/U Lyric T6 Pro	Y8588
Honeywell TH6320WF2003/U LYRIC T6 PRO	Y8589

*Continued On Next Page*





PRODUCT

CAT#

NEST

NT T4001ES Nest Thermostat E

Y8895

Nest T3008US Learning Thermostat

Y8234

WHITE RODGERS

1 Heat / 1 Cool - Non Programmable Conventional WR 1F78-144

91X18

1 Heat / 1 Cool - Non Programmable Conventional WR 1F83C-11

Y8230

1 Heat / 1 Cool - Non Programmable Heat Pump WR 1F86-344

X6250

2 Heat / 2 Cool - Non Programmable WR 1F85U-22

Y8228

2 Heat / 2 Cool - Programmable WR 1F85U-22PR

Y8225

4 Heat / 2 Cool - Programmable WR 1F85U-42

Y8224

White Rodgers 1F83C-11PR Conventional 1H/1C PRG Tst

Y8235

White Rodgers 1F87U-42WF Sensi Wi-Fieldpiece Thermostat

Y8734

T-STAT WIRE

18/8 AWG Thermostat Cable, Solid, Copper, CL2, 250 FT Reel, Brown Jacket

21P67

Thermostat Wire 18-2 UL, 500'

21P61

Thermostat Wire 18-5 UL, 250'

21P64

Thermostat Wire 18-6 UL, 250'

21P65

Thermostat Wire 18-7 UL, 250'

21P66

Thermostat Wire 18-10 UL, 250'

21P69

Thermostat Wire 14/4 STR THHN 600V MINI-SPLIT 250'

Y2067

**TOOLS**

**AAB**

**AMPROBE**

**BOSCH**

**FIELDPIECE**

**FLUKE**

**HILMOR**

**KLEIN**

**SUPCO**

**YELLOW JACKET**

**REFRIGERANT  
TOOLS**

**VETO PRO PAC**

**WELDING**

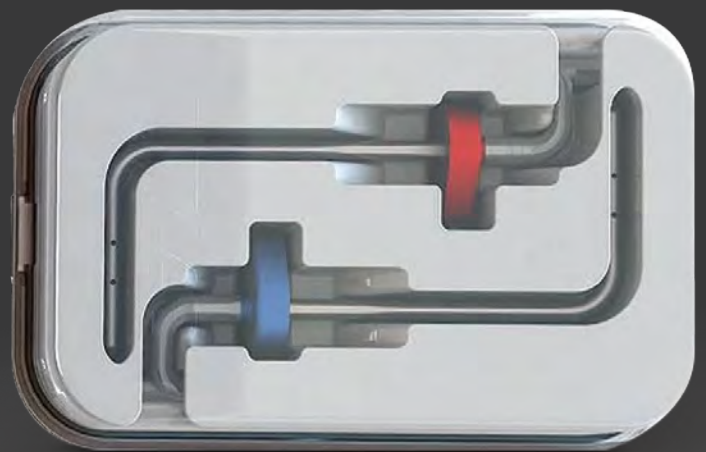


# AAB | AMPROBE | FIELDPIECE FLUKE | HILMOR | KLEIN SUPCO | YELLOW JACKET REFRIGERANT TOOLS | WELDING

## AAB PRB-KIT PROBE KIT

The Stainless Steel Static Pressure Probe Kit for the SPM100 contains: two probes, two color-coded magnetic handles, two 6' sections of rubber tubing and an ergonomic carrying case.

**BUY Y6995**



PRODUCT	CAT#
<b>ABB</b>	
AAB PRB-KIT PROBE KIT	Y6995
AAB ABM-200 Wireless Smart Anemometer	Y7900
AAB SPM-100 SMARTPHONE MANOMETER	Y6994
<b>AMPROBE</b>	
Amprobe AMP-310 600A TRMS CLMP MTR wMTR TST	Y7838

*Continued On Next Page*





### AMPROBE IR-710 10:1 IR THERMOMETER

Offers best in class accuracy and response time with a temperature measurement range of 0°F to 716°F or -18°C to 380°C.

BUY Y7845

### FIELDPIECE SPK1 PCKT THERMOMETER (SELL 1 INDIV PC)

Features a sharp tip for punching through flex duct and hangs easily from a vent or thermostat. Temperature range: -58°F to 392°F.

BUY Y9241

PRODUCT	CAT#
<b>AMPROBE (CONTINUED)</b>	
Amprobe THWD-3 DGTL SLNG PSYCHROMTR	Y7842
Amprobe TH-1 RELATIVE HUMIDITY TEMPERATURE	Y7843
Amprobe IR-710 10:1 IR THERMOMETER	Y7845
<b>BOSCH</b>	
1/4" x 4" x 6" Daredevil Multipurpose Drill Bit	Y9619
1/8" x 2" x 3" Daredevil Multipurpose Drill Bit	Y9616
3/16" x 4" x 6" Daredevil Multipurpose Drill Bit	Y9618

Continued On Next Page



PRODUCT	CAT#
<b>BOSCH (CONTINUED)</b>	
3/8" Impact Tough Black Oxide Drill Bit	Y9611
5/32" x 4" x 6" Daredevil Multipurpose Drill Bit	Y9617
6" 8/10 TPI Reciprocating SawBlades for thick metal-5pc	Y9615
6" 5/8 TPI Reciprocating SawBlades for wood/nail demo-5pc	Y9614
6" 8/14 TPI Reciprocating SawBlades All Purpose-5pc	Y9613
1/2" Impact Tough Black Oxide Drill Bit	Y9610
9 pc Drill Bit Set Impact Tough Black Oxide	Y9608
Circular Telescopic Inspection Mirror, Extends 10" to 14"	81B19
<b>FIELDPIECE</b>	
Pckt Thermomtr Fieldpiece SPK1	Y9241
Deluxe Test Lead Kit Fieldpiece ADK7 ADLS2, ASA2, RCT2	Y9239
Pipe Clamp Thermocoupe (1 3/8") Fieldpiece TC24	Y9242
Dual pressure manometer Fieldpiece SDMN5	Y9240

*Continued On Next Page*

## FLUKE T5-600 ELECTRICAL TESTER VOLTAGE CNT CRRT 600V

The Fluke T5 Electrical Testers let you check voltage, continuity and current with one compact tool. OpenJaw™ current lets you check current up to 100A - without breaking the circuit.

**BUY Y7831**



## HILMOR 1839032 COMPACT BENDER KIT

Bending soft metal pipes and tubing has never been easier. The proprietary design allows it to fit where others can't. Tube sizes: 1/4", 5/16", 3/8", 1/2", 5/8", 3/4", 7/8.

BUY Y7824



## SUPCO M500 LED MEGOHMMETER

An inexpensive alternative to taut band (swing needle) megohmmeters, the Supco M500 provides fast and accurate measurements to verify the condition of the insulation. Temperature range: 32°F to 120°F (0°C to 50°C)

BUY Y8801

PRODUCT	CAT#
<b>FIELDPIECE (CONTINUED)</b>	
Refrigerant Scale Fieldpiece SRS1	Y9296
Job Link Ref Scale w/Remote Fieldpiece SRS3	Y9238
Job Link Probes Charge and Air Kit Fieldpiece JL3KH6	Y9295
Manifold and Micron Gauge 3-Port Digital Fieldpiece SM380V	18U96
Manifold with Micron Gauge Wireless 4-Port Digital Fieldpiece SMAN460	Y9235
Manifold with Micron Gauge Wireless 4-Port Digital w/ 2 Pipe Clamp & 1 Bead thermocouple & Case Fieldpiece SM480V	18U97





PRODUCT	CAT#
<b>FLUKE</b>	
TYPE-K, THERMOCOUPLE ADAPTER Fluke 80AK-A	Y7834
TYPE-K, THERMOCOUPLE BEAD PRB Fluke 80PK-1	Y7835
SOFT CARRYING CASE Fluke C25	Y7836
SUREGRIP INDUSTRIAL TEST LD ST Fluke TL220	Y7832
ELECT TSTR VLTGE CNT CRRT 600V Fluke T5-600	Y7831

*Continued On Next Page*

## YELLOW JACKET 42004 MANIFOLD SET, STD,410A/22/404A

Series 41 Manifold with 60 PLUS II Standard Fittings, psi, R22/404A/410A, °F (Clamshell).

**BUY Y6723**



## NP-R410A PINK CAP FOR R410A EA

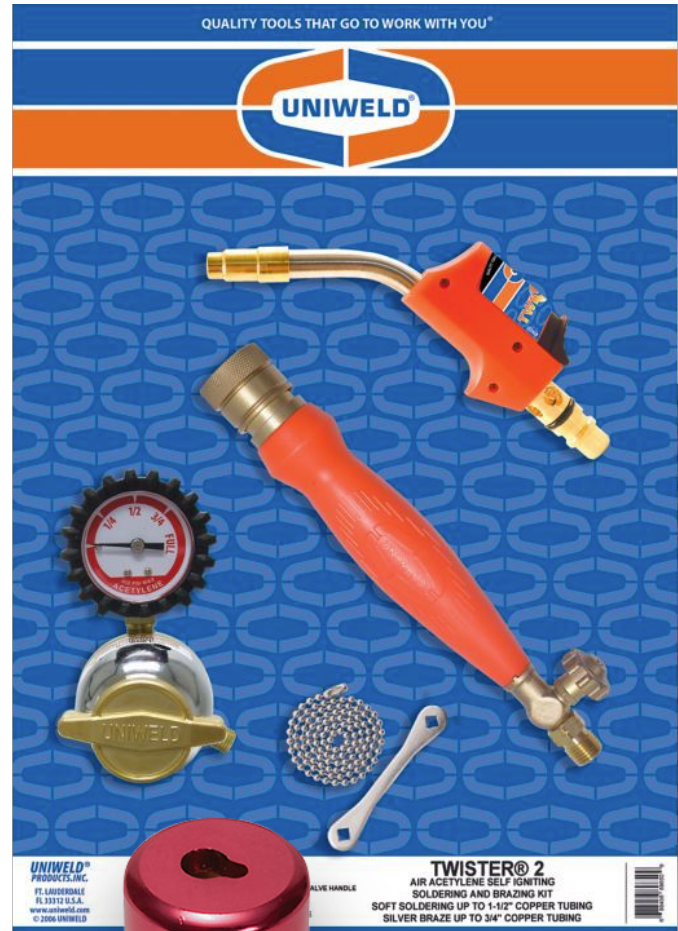
Novents Tamper Resistant caps are made for sealing and protecting Schraeder service valves. Use as a lock to deter tampering with refrigerant service valves.

**BUY Y0604**

## B-ACETYLENE TWISTER<sup>®</sup>2 KIT

Uniweld's KT2A5 Twister<sup>®</sup>2 Kit features swirl combustion technology that produces a high energy efficient flame that remains stable, even in windy conditions.

**BUY Y8696**



PRODUCT	CAT#
<b>FLUKE (CONTINUED)</b>	
HVAC/R TRUE RMS MULTIMETER Fluke-116	Y7828
TYPE-K PIPE CLMP THERMOCPL PRB Fluke 80PK-8	Y7829
400A AC TRMS CLMP MTR wTEMP Fluke-324	Y7826
TRMS WIRELESS HVAC CLAMP Fluke-902	Y7825
<b>HILMOR</b>	
HVAC GLOVES LG Hilmour 1891607	Y7820
Service Wrench Hex Key Adptr Hilmour 1839046	Y7785
Offset Service Wrench Hilmour 1839043	Y7786

*Continued On Next Page*



PRODUCT	CAT#
<b>HILMOR (CONTINUED)</b>	
Service Wrench Hilmour 1839042	Y7787
8" Adjustable Wrench Hilmour 1885370	Y7817
10 INCH ADJUSTABLE WRENCH Hilmour 1885421	Y7818
1/4" MAGNETIC NUTSET 3-PACK Hilmour 1885435	Y7782
5/16" MAGNETIC NUTSET 3-PACK Hilmour 1885436	Y7783
1-1/2" Magnetic Nut Drivers (2) Hilmour 1839057	Y7793
3" Shaft Quick-Change Magnetic Nut Drivers Set, 2-Piece Hilmour 1839054	Y7794
6" Shaft Magnetic Nut Drivers (2) Hilmour 1839074	Y7797
6" Shaft Magnetic Nut Drivers (7) Hilmour 1839075	Y7796
1/4 & 5/16 QKCHG MG NT DVR 6" Hilmour 1891260	Y7801
HGS Hose Gaskets 1/4" 12PK Hilmour 1932982	Y8530
Stubby Multi Tool Hilmour 1891351	Y7784
Folding Hex Key Set Inches Hilmour 1839048	Y7789
9 in 1 Phillips Multi-Tool Hilmour 1839053	Y7808
Multi-Swage Punch Hilmour 1839009	Y7788
HGL Hose Gaskets 3/8" 10Pk Hilmour 1932984	Y8529
Fin Straightening Tool Hilmour 1891255	Y7819
10" Tongue and Groove Pliers Hilmour 1885367	Y7813
8" Wire Stripper Hilmour 1885424	Y7810
8" Diagonal Cutting Pliers Hilmour 1885363	Y7816
8" Long Nose Pliers Hilmour 1885398	Y7809
8-1/2 IN LINEMAN'S PLIER Hilmour 1885399	Y7811
10 INCH FORGED CRIMPER Hilmour 1885429	Y7814
5 BLADE CRIMPER Hilmour 1891187	Y7815
CABLE TIE TENSIONING TOOL Hilmour 1891190	Y7805
PRECISION SCREWDRIVER SET Hilmour 1891089	Y7807
FOLDING UTILITY KNIFE Hilmour 1885433	Y7781
1/8" - 5/8" Tubing Cutter Hilmour 1885381	Y7791

*Continued On Next Page*



PRODUCT	CAT#
<b>HILMOR (CONTINUED)</b>	
1/8 - 1-3/8 Tubing Cutter Hilmour 1885384	Y7790
Ratchet Plastic Tubing Cutter Hilmour 1885393	Y7804
HOLE CUTTER 2" TO 12" Hilmour 1891191	Y7792
HOLE CUTTER 2" TO 20" Hilmour 1891192	Y7800
V CORE REMOVAL TOOL 5/16" Hilmour VCR516	Y8534
HOSE 60" SET OF 3 Hilmour H60S3	Y8531
Ball Valve Ends, Set of 3 Hilmour 1935915	18F09
Bending Attachment, Reverse Hilmour 1890999	18F10
SMTHCRB HOLE CUTR BIT 1 PK Hilmour 1891193	Y8532
HOSE 60"- Ball Valve Set of 4 Hilmour 1839143	Y7806
CMPCT SWAGE TOOL KIT Hilmor 1839015	Y7822
COMPACT BENDER KIT Hilmor 1839032	Y7824
VALVE CORE REMOVAL TOOL 1/4" Hilmor VCR14	Y8537
<b>KLEIN</b>	
Journeyman Utility Gloves (L) Klein Tools 40206	Y7905
Double Hook Magnetic Tape Measure 25ft Klein Tools 9225	Y8584
Terminal Block Screwdriver Klein Tools 612-4	Y7903
4-in-1 Electric SD Klein Tools 32581	Y8582
SCREWDRIVER RND SHANK 4"X8-5/16 Klein Tools 603-4	Y1486
SCREWDRIVER SQ SHANK 1/4"X4" Klein Tools 600-4	Y1479
6-in-1 Ratchg Stubby SD Klein Tools 32593	Y8583
11-in-1 Screwdriver Klein Tools 32527	Y3362
8-in-1 S' driver/ Nut Driver Klein Tools 32596	18F07
SCREWDRIVER SET 4PC MINI ASSORT Klein Tools 85484	Y1499
NUT DRIVER, MAGNETIC 1/4"X3" Klein Tools 630-1/4M	Y1490
NUT DRIVER, MAGNET 5/16"X3" Klein Tools 630-5/16M	Y1491
1/4 x 6 Nut Driv Mag Hollow Klein Tools 646-1/4M	Y3864

*Continued On Next Page*



PRODUCT	CAT#
<b>KLEIN (CONTINUED)</b>	
NUT DRIVER SET 2PC MAGNET6"SHAFT Klein Tools 646M	Y1493
MAG 7-in-1 Nut Driver Klein Tools 32807	18F05
Hex Head SD Nut Driver 1-1/2" Klein Tools 65131	18D94
ML MSHXLC Hex Driver 1/4" & 5/16"- 6"	17P95
Aviation Snip w/ Wire Cutter St Klein Tools 1202S	18D97
Wire Stripper Klein Tools 11055	Y8581
6 Inch Duct Knife Klein Tools DK06	Y3871
Folding Jab Saw Klein Tools 31737	Y9860
EN 3/4" PVC Cutter Klein Tools 50506 S	Y3869
Magnetic Digi Pocket Thermometer Klein Tools ET10	Y9863
Telescoping Magnetic LED Pickup Klein Tools 56027	Y9862
DiagCut Pliers AH Klein Tools D248-8	Y8585
WRENCH ADJ EXTRA CAP 8" Klein Tools D507-8	Y1505
5-Blade Crimper Klein Tools 86520	Y9858
Journeyman Offset Snips L Cut Klein Tools J2100L	Y2976
SIDE-CUTTING PLIERS 9" Klein Tools D213-9NE	Y1758
Hybrid Pliers Klein Tools J215-8CR	18D98
Wireless Jobsite Speaker Klein Tools AEPJS1	Y9864
Offset Hand Seamer, 3-Inch Klein Tools 86524	Y9859
JOURNEYMAN CRIMPING TOOLS/TERM Klein Tools J1005	Y1451
Journeyman Offset Snips R Cut Klein Tools J2101R	Y2977
Rev Jaw/Adjust Pipe Wrench 10" Klein Tools D86930	18F08
Non-Contact Voltage Tester Klein Tools NCVT-4IR	18D95
All Purpose Plier w Crimper Klein Tools, J2078CR,	Y7906
<b>SUPCO</b>	
Supco M500 LED MEGOHMMETER	Y8801
Supco VG64 DIGITAL VACUUM GAUGE	Y8811



PRODUCT	CAT#
<b>YELLOW JACKET</b>	
Torque Wrench Kit, 8 Heads, 16, 17, 21, 22, 24, 26, 27 and 29 mm	30P80
Yellow Jacket 69354 Elect Refrigerant Leak Detector	Y6712
Yellow Jacket 95730 Refrigerant Recovery Machine	Y6716
Yellow Jacket 42004 Manifold Set, Std,410A/22/404A	Y6723
Yellow Jacket Heat Pump Manifold with Hose	Y7898
Yellow Jacket DELUXE FLARE TOOL 1/8-3/4	Y7899
<b>REFRIGERANT TOOLS</b>	
NP-R410A-10PK PINK CAP FOR R410A	Y0603
NP-R410A PINK CAP FOR R410A EA	Y0604
Refrigerant Silver Cap for Any Gas 1/4" Thread	Y0616
Refrigerant Multikey Unlocks for All Caps	Y0607
NITROGEN PURGE TOOL	Y6978
<b>WELDING</b>	
Stay-Silv 5 PhosCopper Brazing Alloy, .050 x 1/8 x 20 in., 28 Stick Tube	18Z75
Stay-Silv 6 PhosCopper Brazing Alloy, .050 x 1/8 x 20 in., 28 Stick Tube	14Z08
Stay-Silv 15 PhosCopper Brazing Alloy, .050 x 1/8 x 20 in., 28 Stick Tube	18Z76
Welding and Brazing Tip	Y8560
Welding and Brazing Tip	Y8566
Cap'n Hook Five Flame Tip	Y8562
Rosebud Heat Tip	Y8565
Welding Handle with "A" Hose Connections and Front Valves	Y8557
Nitrogen Regulator with 0-800 PSI Delivery Pressure	Y8558
Cap'n Hook Welding and Brazing Outfit with 511 Stand	Y8564
Cap'n Hook Welding and Brazing Outfit with 511 Stand and Tanks	Y8563
Twister 2 Kit for "B" Acetylene Tank	Y8696



PRODUCT	CAT#
<b>VETO PRO PAC</b>	
Veto Tech Tool Pouch / Meter Bag 9in Height	Y8222
Veto Tech Tool Pouch 9.5in Height	Y8217
Veto Tech Pac Tall Tool Bag 10in Height	Y9935
Veto Tech Pac Closed Top Tool Bag 19in Height	Y8220
Veto Tech Pac Backpack Tool Bag 17in Height	10P11



## VETO TECH-LC TECH SERIES CLOSED TOP TOOL BAG

Designed for HVAC tech's tools! 53 pockets w/ample room for hand tools, parts boxes, meters and compact cordless drill. Additional 8 small neoprene pockets for drill bits and extensions.

**BUY Y8220**



# UNIVERSAL PARTS

**CAPACITORS**

**CONTACTORS**

**DRIERS**

**MOTORS**

**TRANSFORMERS**





# CAPACITORS CONTACTORS | DRIERS MOTORS | TRANSFORMERS

## FIRSTCHOICE RUN CAPACITOR 5MFD@370VAC OVAL

Run capacitor, FirstChoice brand,  
5 MFD, 370v, oval.

BUY 19H91



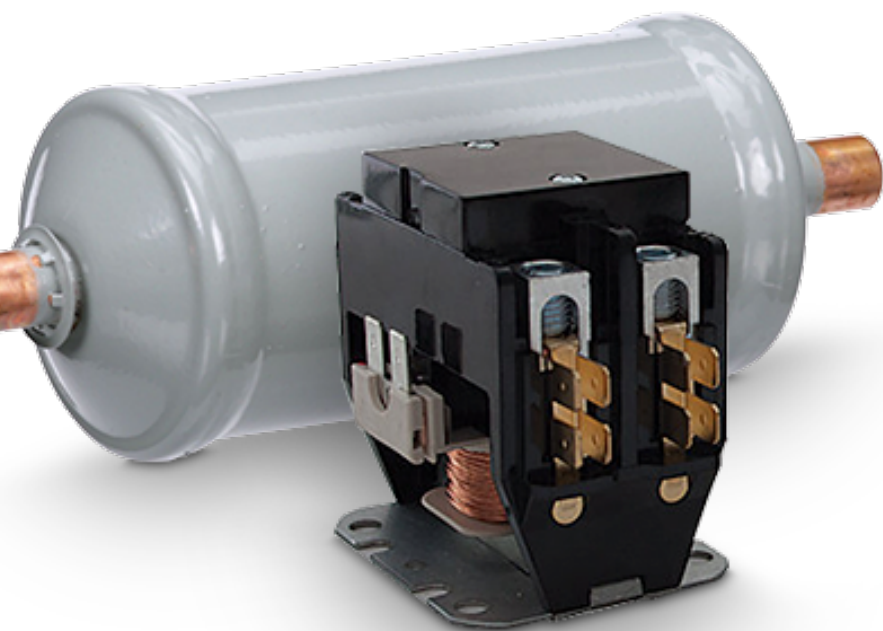
PRODUCT	CAT#
<b>CAPACITORS</b>	
FirstChoice Run Capacitor 5MFD@370VAC Oval	19H91
FirstChoice Run Capacitor 7.5MFD@370VAC Oval	19H92
FirstChoice Run Capacitor 10MFD@370VAC Oval	19H93
FirstChoice Run Capacitor 20MFD@440VAC Round	19H94
FirstChoice Run Capacitor 35MFD@440VAC Round	19H97
FirstChoice Run Capacitor 40MFD@440VAC Round	19J01
FirstChoice Run Capacitor 45 MFD@440VAC Round	19J02

*Continued On Next Page*



PRODUCT	CAT#
<b>CAPACITORS (CONTINUED)</b>	
FirstChoice Run Capacitor 50 MFD@440VAC Round	19J03
FirstChoice Run Capacitor 60 MFD@440VAC Round	19J05
FirstChoice Run Capacitor 5 MFD@440VAC Oval	19J06
FirstChoice Run Capacitor 7.5MFD@440VAC Oval	19J07
FirstChoice Run Capacitor 10MFD@440VAC Oval	19J17
FirstChoice Run Capacitor 12.5MFD@440VAC Oval	19J20
FirstChoice Run Capacitor 15MFD@440VAC Oval	19J21
FirstChoice Run Capacitor 30MFD@440VAC Round	19J22
FirstChoice Dual Run Capacitor 30+5MFD@440VAC Round	19J23
FirstChoice Dual Run Capacitor 35+5MFD@440VAC Round	19J24
FirstChoice Dual Run Capacitor 40+5MFD@440VAC Round	19J28
FirstChoice Dual Run Capacitor 45+5MFD@440VAC Round	19J29
FirstChoice Dual Run Capacitor 50+5MFD@440VAC Round	19J30
FirstChoice Dual Run Capacitor 55+5MFD@440VAC Round	19J31
FirstChoice Dual Run Capacitor 60+5MFD@440VAC Round	19J32
FirstChoice Dual Run Capacitor 80+5MFD@440VAC Round	19J38
FirstChoice Dual Run Capacitor 35+7.5MFD@440VAC Round	19J39
FirstChoice Dual Run Capacitor 40+7.5MFD@440VAC Round	19J40
FirstChoice Dual Run Capacitor 45+7.5MFD@440VAC Round	19J41
FirstChoice Dual Run Capacitor 50+7.5MFD@440VAC Round	19J42
FirstChoice Dual Run Capacitor 55+7.5MFD@440VAC Round	19J43
FirstChoice Dual Run Capacitor 60+7.5MFD@440VAC Round	19J44
FirstChoice Dual Run Capacitor 80+7.5MFD@440VAC Round	19J45
Run Capacitor 10MFD 370/440V OVAL USA MADE	Y9290
Run Capacitor, 45/5MFD 370/440V Round, USA MADE	Y9293
TURBO Universal Run Capacitor, 2.5 - 15 MFD 370/440V OVAL	Y9294
TURBO 200 Univ Run Cap 67.5MFD 370/440V	X5792
TURBO 200X Univ Cap 97.0 MFD @ 370/440V	X5793





### FIRSTCHOICE SINGLE POLE 30A 24V COIL

FirstChoice contactor, single pole, 30a 24v coil.

**BUY 19J46**

### FIRSTCHOICE DRIER, 3/8" S BI-FLOW 16CU

Lennox FirstChoice Bi-Directional Flow Liquid Line Filter Drier, 16 cu. in. with 3/8" x 3/8" ODF Connections for Heat Pump Applications.

**BUY 19K45**

PRODUCT	CAT#
<b>CONTACTORS</b>	
Single Pole 30A 24V Coil	19J46
Double Pole 30A 24V Coil	19J47
Double Pole 40A 24V Coil	19J48
Triple Pole 40A 24V Coil	19J68
Triple Pole 50A 24V Coil	19J69
<b>DRIERS</b>	
Drier, 3/8" S Bi-Flow 16CU	19K45
Drier, 3/8" S Liquid 5CU	19K59
Drier, 3/8" S Liquid 8CU	19K60
Drier, 3/8" S Liquid 16CU	19K61
Drier, 3/4" S Suction 30CU	19K62

PRODUCT

CAT#

**DRIERS (CONTINUED)**

Drier, 7/8" Suction 30CU	19K94
Catch-All Liquid Line Bi-Flow Filter Drier, 16 cu in, 3/8" ODF Solder, 1-5 Tons	34X36
Liquid Line Bi-Flow Filter Drier, 8 cu in, 3/8" ODF Solder, 1-5 Tons	X7788

**MOTORS: FIRSTCHOICE**

Cond Fan 1/4HP 208-230V 1075	19L18
Cond Fan 1/3HP 208-230V 1075	19L19
Cond Fan 1/2HP 208-230V 1075	19L23
Cond Fan 1/4HP 208-230V 825	19L24
Cond Fan 1/3HP 208-230V 825	19L25
Cond Fan 70C 1/4HP 208-230V	19L26
Cond Fan 1/3HP 208-230V	19L27
Cond Fan 70C 1/4HP 208-230V	19L28
Cond Fan 70C 1/3HP 208-230V	19L29

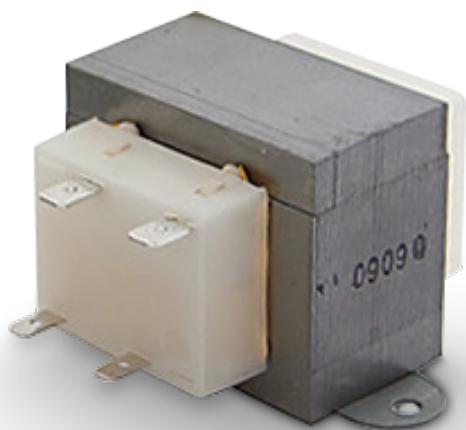
*Continued On Next Page*

**FIRSTCHOICE CONDENSER FAN 1/6-1/3HP 208-230V**

Continuous duty totally enclosed air over, automatic thermal protection, ball bearings, 30" leads, class F insulation, reversible.

**BUY 19L34**





**FIRSTCHOICE  
 TRANSFORMER  
 240/208/120VPRI  
 24VSEC 40VA**

FirstChoice Transformer  
 240/208/120VPri 24VSec 40VA.

**BUY 19J70**

PRODUCT	CAT#
<b>MOTORS: FIRSTCHOICE (CONTINUED)</b>	
Cond Fan 70C 1/4HP 460V 1075	19L30
Cond Fan 70C 1/3HP 460V 1075	19L31
Cond Fan 70C 1/2HP 460V 1075	19L32
Cond Fan 1/6-1/3HP 208-230V	19L33
Cond Fan 1/6-1/3HP 208-230V	19L34
Blower 1/3HP 208-230V 3SPD 1075	19L35
Blower 1/3HP 115V 3SPD 1075	19L36
Blower 1/2HP 115V 3SPD 1075	19L37
Blower 1/2HP 208-230V 3SPD 1075	19L38
Blower 3/4HP 115V 3SPD 1075	19L39
Blower 3/4HP 208-230V 3SPD 1075	19L40
Cond Fan 1/6-1/3HP 208-230V	19L41
Cond Fan 1/6-1/3HP 208-230V 825	19L42
Blower 1/6-1/2HP 115V 4SPD 1075	19L43
Blower 1/6-1/2HP 208-230V 4SPD	19L44
Blower 1/5-3/4HP 115V 4SPD	19L45
Blower 1/5-3/4HP 208-230V 4SPD	19L46

**PRODUCT**

**CAT#**

**MOTORS: GENTEQ**

Genteq 5K010V, EVERGREEN® User Interface	23V29
Genteq 5K015, 16-4 Pin Adapter	23V30
Blower Motor 1/2HP 1050RPM 4SPD 120/240V 48FR Genteq 6505V	23V33
Blower Motor 3/4HP 1050RPM 4SPD 120/240V 48FR Genteq 6507V	23V34
Blower Motor ECM 1/2HP 1075RPM 5SPD/PWM 208/230V 48FR Genteq 6205E	23V31
Blower Motor ECM 3/4HP 1075RPM 5SPD/PWM 208/230V 48FR Genteq 6207E	23V32

**MOTORS: CENTURY**

Blower Motor 1/2HP 1075RPM 4SPD 115V 48FR Century EM3463	23V37
Blower Motor 1/2HP 1075RPM 4SPD 208/230V 48FR Century EM3464	23V38
Blower Motor 3/4HP 1075RPM 4SPD/PWM 115V 48FR Century EM3466	23V39
Blower Motor 3/4HP 1075RPM 4SPD/PWM 208/230V 48FR Century EM3467	23V40
HP Condenser Fan Motor 1/3-1/6HP 1075RPM 1SPD/PWM 208/230V 48FR Century EM3458F	23V35
HP Condenser Fan Motor 1/3-1/8HP 825RPM 1SPD/PWM 208/230V 48FR Century EM3459F	23V36

**MOTORS: EMERSON**

Emerson RESCUE Blower Motor, 1/2-1/6HP, 1075RPM, 115V	76N17
Emerson Rescue Condenser Fan Motor, 1/3-1/6HP 1075RPM, 208V	76N19

**MOTORS: MARS**

Blower Motor, Constant Torque, 5 Speed, 1/2 to 1 HP, 115/230V, 1075 RPM, Mars Azure Digi-Motor 10861	Y9693
Blower Motor, Constant Torque, 5 Speed, 1/5 to 1/2 HP, 115/230V, 1075 RPM, Mars Azure Digi-Motor 10860	Y9692

**TRANSFORMERS**

FirstChoice 240/208/120VPri 24VSec 40VA \$15.71	19J70
FirstChoice 480/240/208/120VPri 24V 75VA	19J71
Honeywell AT140A1018 TRANSFORMER 120/208/240V	10P17
Honeywell AT87A1106 TRANSFORMER 120/208/240V	10P87
Honeywell AT175A1008 TRANSFORMER 120/208/240V	12P61
Honeywell AT72D1683 TRANSFORMER 120V	10P18
Mars 120 Volts Primary, 24 Volts Secondary, 40 VA	13N48



