



RESIDENTIAL
PRODUCT CATALOG

Bulletin No. 210969
January 2022
(Supersedes all previous versions)

MERIT[®] SERIES





RESIDENTIAL PRODUCT CATALOG

GAS FURNACES

ML296UHV 1
Upflow/Horizontal - Two-Stage Heat - Variable Speed Blower; Direct/Non-Direct Vent
AFUE - 96% - Input - 44,000 to 110,000 Btuh
ML296DFV 3
Downflow - Two-Stage Heat - Variable Speed Blower; Direct/Non-Direct Vent
AFUE - 96% - Input - 44,000 to 88,000 Btuh
ML196UHE 7
Upflow/Horizontal - Constant Torque Blower Motor Direct/Non-Direct Vent
AFUE - 96% - Input - 30,000 to 132,000 Btuh
ML196DFE 9
Downflow - Constant Torque Blower Motor Direct/Non-Direct Vent
AFUE - 96% - Input - 44,000 to 110,000 Btuh
ML193UHE 13
Upflow/Horizontal - Direct/Non-Direct Vent Constant Torque Blower Motor - AFUE - 93%; Input - 30,000 to 110,000 Btuh
ML193DFE 15
Downflow - Direct/Non-Direct Vent; Constant Torque Blower Motor - AFUE - 93%; Input - 44,000 to 88,000 Btuh
ML180UHV 19
Upflow/Horizontal - Variable Speed Blower; AFUE - 80%; Input - 30,000 to 110,000 Btuh
ML180UHE 23
Upflow/Horizontal - Constant Torque Blower Motor; AFUE - 80%; Input - 44,000 to 132,000 Btuh
ML180DFE 25
Downflow - Constant Torque Blower Motor; AFUE - 80%; Input - 44,000 to 110,000 Btuh

AIR CONDITIONERS

ML14XC1 1
R-410A - Scroll Compressor; SEER - Up to 18.00; 1.5 to 5 Tons
16ACX 3
R-410A - Two-Stage Scroll Compressor; SEER - Up to 18.00; 2 to 5 Tons
13ACXN 5
R-410A - Scroll Compressor; SEER - Up to 16.00; 1.5 to 5 Tons

HEAT PUMP OUTDOOR UNITS

ML16XP1 1
R-410A; SEER - Up to 17.00; 1.5 to 5 Tons
ML14XP1 3
R-410A; SEER - Up to 16.00; 1.5 to 5 Tons
16HPX 5
R-410A - Two-Stage Scroll Compressor; SEER - Up to 17.00; 2 to 5 Tons

INDOOR COILS

CX35 (CASED) 1
Upflow - Cased - R-410A - Factory TXV - Quantum™ Coil 1.5 to 5 Tons
C35 (CASED) 3
Upflow - Cased - Quantum™ Coil; 1.5 to 5 Tons
C35 (UNCASED) 5
Upflow - Uncased - Quantum™ Coil; 1.5 to 5 Tons
CHX35 7
Horizontal - Cased - R410A - Factory TXV; 1.5 to 5 Tons
CH35 9
Horizontal - Cased; 1.5 to 5 Tons
CH23 11
Horizontal - Cased; 1.5 to 5 Tons
CR33 13
Downflow - Cased; 1.5 to 5 Tons
CR33 16

AIR HANDLERS

CBA25UHV 1
Upflow / Horizontal - R410A - Programmable Multi-Speed Blower Motor; 1.5 to 5 Tons; Optional Electric Heat - 2.5 to 20 kW
CBA25UH 3
Upflow / Horizontal - R410A; 1.5 to 5 Tons; Optional Electric Heat - 2.5 to 20 kW

INDOOR AIR QUALITY

HCC 1
MERV 11, MERV 13 Media Air Cleaner

CONTROLS

iComfort® M30 1
Smart Wi-Fi Thermostat
ComfortSense® 5500 2
Touchscreen 7-Day Programmable Thermostats
ComfortSense® 3000 3
5-2 Day Programmable Thermostats
ComfortSense® 3000 4
Non-Programmable Thermostats

NOTE - Due to Lennox' ongoing commitment to quality, Specifications, Ratings and Dimensions subject to change without notice and without incurring liability. Improper installation, adjustment, alteration, service or maintenance can cause property damage or personal injury. Installation and service must be performed by a qualified installer and servicing agency.



GAS FURNACES ML296UHV MERIT® SERIES

RESIDENTIAL PRODUCT CATALOG

FEATURES

Heating System

- Lennox Duralok Plus™ Aluminized Steel Heat Exchanger Assembly
- Aluminized Steel Inshot Burners
- Two-Stage Gas Control Valve with 100% Safety Shutoff
- Flame Rollout Switches
- Limit Controls
- SureLight® Hot Surface Ignitor
- Two-Speed Combustion Air Inducer

Direct Vent/Non-Direct Vent Sealed Combustion

- Direct Vent - Combustion air supplied from outdoors
- Non-Direct Vent - Combustion air supplied from indoors

Controls

- SureLight® Integrated Two-Stage Furnace Control
- 24 Volt Transformer
- Field Wiring Make-up Box

Variable-Speed Blower Motor

- High efficiency, variable speed ECM (Electronically Commutated Motor) Maintains specified air volumes up to a maximum of 1.0 in. w.g. (cooling)total external static

Variable Speed Direct Drive Blower

- Each blower assembly is statically and dynamically balanced

Cabinet

- Upflow, downflow, horizontal-left or horizontal-right applications without any internal modifications to the unit
- Pre-painted finish
- Foil-faced insulation on sides and back of heating compartment

Low Leakage Cabinet

- Less than 2%

Upflow/Horizontal - Two-Stage Heat - Variable Speed Blower
Direct/Non-Direct Vent
AFUE - 96% - Input - 44,000 to 110,000 Btuh

Page 1

January 2022

Supersedes June 2021



NOTE - Furnaces Cannot Be Twinned!

NOTE - Furnaces Cannot Be Zoned!

ACCESSORIES

- See page 5

Cabinet

- Condensate Kits
- Condensate Drain Heat Cable
- Crawl Space Vent Drain Kit
- Horizontal Suspension Kit
- Return Air Base

Controls

- iComfort® M30 Smart Wi-Fi Thermostat

Filter Kits

- Air Filter and Rack Kits

Gas Heating

- Gas Conversion Kits
- High Altitude Orifice Kits
- High Altitude Pressure Switch Kits
- Termination Kits

Service Kits

- Night Service Kit

Coil Match-up

- All furnaces match Lennox cased upflow indoor coils and horizontal indoor coils with same letter designation (A, B, C, D) as in the furnace model number

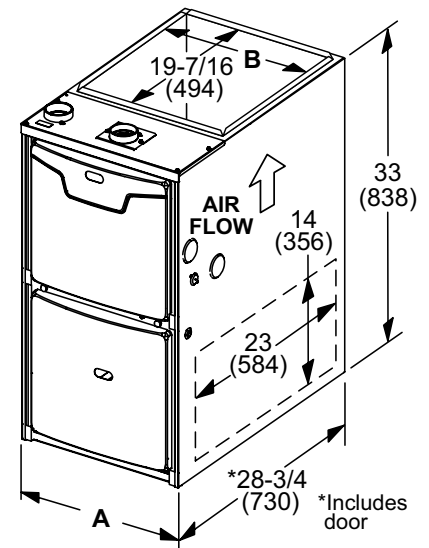
LIMITED WARRANTY

- Heat Exchanger - Twenty-years
- All other covered components - Five years

NOTE - Refer to Lennox Equipment Limited Warranty certificate included with equipment for details.

Furnace Width		"B"	"C"
A Dimension	Width	17-1/2 (446)	21 (533)
	Depth	16-3/8 (416)	19-7/8 (454)
Bottom return	Width	16 (406)	19-1/2 (495)
	Depth	23-1/2 (597)	23-1/2 (597)

DIMENSIONS



NOTE - Due to Lennox' ongoing commitment to quality, Specifications, Ratings and Dimensions subject to change without notice and without incurring liability. Improper installation, adjustment, alteration, service or maintenance can cause property damage or personal injury. Installation and service must be performed by a qualified installer and servicing agency.

SPECIFICATIONS

Gas	Model No.	ML296UH045XV36B	ML296UH070XV36B
Heating	AHRI Reference No.	202575920	202575921
Performance	¹ AFUE	96%	96%
High Fire	Input - Btuh	44,000	66,000
	Output - Btuh	42,000	62,000
Gas Manifold Pressure (in. w.g.) Nat. Gas / LPG/Propane	Temperature rise range - °F	35 - 65	50 - 80
	Low	3.5 / 10.0	3.5 / 10.0
	Input - Btuh	29,000	43,000
	Fire	Output - Btuh	28,000
Gas Manifold Pressure (in. w.g.) Nat. Gas / LPG/Propane	Temperature rise range - °F	20 - 50	25 - 55
		1.7 / 4.5	1.7 / 4.5
High static - in. w.g.	Heating	0.8	0.8
	Cooling	1.0	1.0
Connections in.	Intake / Exhaust Pipe (PVC)	2 / 2	2 / 2
	Gas pipe size IPS	1/2	1/2
	Condensate Drain Trap (PVC pipe) - i.d.	3/4	3/4
	with furnished 90° street elbow with field supplied (PVC coupling) - o.d.	3/4 slip x 3/4 Mipt 3/4 slip x 3/4 MPT	3/4 slip x 3/4 Mipt 3/4 slip x 3/4 MPT
Indoor Blower	Wheel nominal diameter x width - in.	10 x 9	10 x 9
	Motor output - hp	1/2	1/2
	Tons of add-on cooling	2 - 3	2 - 3
	Air Volume Range - cfm	500 - 1370	515 - 1330
Electrical Data	Voltage	120 volts - 60 hertz - 1 phase	
	Blower motor full load amps	7.7	7.7
	Maximum overcurrent protection	15	15
Shipping Data	lbs. - 1 package	130	138

SPECIFICATIONS

Gas	Model No.	ML296UH090XV48C	ML296UH110XV60C
Heating	AHRI Reference No.	202575923	202735180
Performance	¹ AFUE	96%	96%
High Fire	Input - Btuh	88,000	110,000
	Output - Btuh	84,000	106,000
Gas Manifold Pressure (in. w.g.) Nat. Gas / LPG/Propane	Temperature rise range - °F	45 - 75	45 - 75
	Low	3.5 / 10.0	3.5 / 10.0
	Input - Btuh	57,000	72,000
	Fire	Output - Btuh	55,000
Gas Manifold Pressure (in. w.g.) Nat. Gas / LPG/Propane	Temperature rise range - °F	30 - 60	35 - 65
		1.7 / 4.5	1.7 / 4.5
High static - in. w.g.	Heating	0.8	0.8
	Cooling	1.0	1.0
Connections in.	Intake / Exhaust Pipe (PVC)	2 / 2	2 / 2
	Gas pipe size IPS	1/2	1/2
	Condensate Drain Trap (PVC pipe) - i.d.	3/4	3/4
	with furnished 90° street elbow with field supplied (PVC coupling) - o.d.	3/4 slip x 3/4 Mipt 3/4 slip x 3/4 MPT	3/4 slip x 3/4 Mipt 3/4 slip x 3/4 MPT
Indoor Blower	Wheel nominal diameter x width - in.	11 x 11	11 x 11
	Motor output - hp	3/4	1
	Tons of add-on cooling	2.5 - 4	3 - 5
	Air Volume Range - cfm	675 - 1765	800 - 2105
Electrical Data	Voltage	120 volts - 60 hertz - 1 phase	
	Blower motor full load amps	10.1	12.8
	Maximum overcurrent protection	15	20
Shipping Data	lbs. - 1 package	163	174

NOTE - Filters and provisions for mounting are not furnished and must be field provided.

¹ Annual Fuel Utilization Efficiency based on DOE test procedures and according to FTC labeling regulations. Isolated combustion system rating for non-weatherized furnaces.



NOTE - Due to Lennox' ongoing commitment to quality, Specifications, Ratings and Dimensions subject to change without notice and without incurring liability. Improper installation, adjustment, alteration, service or maintenance can cause property damage or personal injury. Installation and service must be performed by a qualified installer and servicing agency.



GAS FURNACES ML296DFV MERIT® SERIES

RESIDENTIAL PRODUCT CATALOG

FEATURES

Heating System

- Lennox Duralok Plus™ Aluminized Steel Heat Exchanger Assembly
- Aluminized Steel Inshot Burners
- Two-Stage Gas Control Valve with 100% Safety Shutoff
- Flame Rollout Switches
- Limit Controls
- SureLight® Hot Surface Ignitor
- Two-Speed Combustion Air Inducer

Direct Vent/Non-Direct Vent Sealed Combustion

- Direct Vent - Combustion air supplied from outdoors
- Non-Direct Vent - Combustion air supplied from indoors

Controls

- SureLight® Integrated Two-Stage Furnace Control
- 24 Volt Transformer
- Field Wiring Make-up Box

Variable-Speed Blower Motor

- High efficiency, variable speed ECM (Electronically Commutated Motor) Maintains specified air volumes up to a maximum of 1.0 in. w.g. (cooling)total external static

Variable Speed Direct Drive Blower

- Each blower assembly is statically and dynamically balanced

Cabinet

- Downflow applications
- Pre-painted cabinet finish
- Foil-faced insulation on sides and back of heating compartment

Low Leakage Cabinet

- Less than 2%

Coil Match-up

- All Lennox downflow indoor coils will physically match the furnace supply air opening with the same letter designation (A, B, C, D) as in the furnace model number



Downflow - Two-Stage Heat - Variable Speed Blower
Direct/Non-Direct Vent
AFUE - 96% - Input - 44,000 to 88,000 Btuh

Page 3

January 2022

Supersedes June 2021

NOTE - Furnaces Cannot Be Twinning!

NOTE - Furnaces Cannot Be Zoned!

ACCESSORIES

- See page 5

Cabinet

- Downflow Combustible Flooring Base
- Condensate Kits
- Condensate Drain Heat Cable
- Crawl Space Vent Drain Kit

Controls

- iComfort® M30 Smart Wi-Fi Thermostat

Filter Kits

- Downflow Filter Kits

Gas Heating

- Gas Conversion Kits
- High Altitude Orifice Kits
- High Altitude Pressure Switch Kits
- Left Side Vent Kit
- Termination Kits

Service Kits

- Night Service Kit

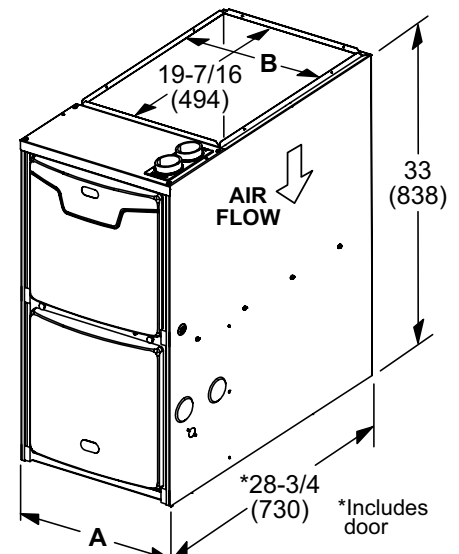
DIMENSIONS

LIMITED WARRANTY

- Heat Exchanger - Twenty-years
- All other covered components - Five years

NOTE - Refer to Lennox Equipment Limited Warranty certificate included with equipment for details.

Furnace Width		"B"	"C"
A Dimension	Width	17-1/2 (446)	21 (533)
	Depth	16 (406)	19-1/2 (495)
B Dimension	Width	16-3/8 (416)	19-7/8 (454)
	Depth	19-1/4 (489)	19-1/4 (489)



NOTE - Due to Lennox' ongoing commitment to quality, Specifications, Ratings and Dimensions subject to change without notice and without incurring liability. Improper installation, adjustment, alteration, service or maintenance can cause property damage or personal injury. Installation and service must be performed by a qualified installer and servicing agency.

SPECIFICATIONS

Gas Heating Performance	Model No.	ML296DF045XV36B	ML296DF070XV48B	ML296DF090XV60C
	AHRI Reference No.	202575917	202575918	202575919
	¹ AFUE	96%	96%	96%
High Fire	Input - Btuh	44,000	66,000	88,000
	Output - Btuh	43,000	64,000	85,000
	Temperature rise range - °F	35-65	35-65	40-70
	Gas Manifold Pressure (in. w.g.) Nat. Gas / LPG/Propane	3.5 / 10.0	3.5 / 10.0	3.5 / 10.0
Low Fire	Input - Btuh	29,000	43,000	57,000
	Output - Btuh	28,000	42,000	56,000
	Temperature rise range - °F	20 - 50	25 - 55	30 - 60
	Gas Manifold Pressure (in. w.g.) Nat. Gas / LPG/Propane	1.7 / 4.5	1.7 / 4.5	1.7 / 4.5
High static - in. w.g.	Heating	0.8	0.8	0.8
	Cooling	1.0	1.0	1.0
Connections in.	Intake / Exhaust Pipe (PVC)	2 / 2	2 / 2	2 / 2
	Gas pipe size IPS	1/2	1/2	1/2
	Condensate Drain Trap (PVC pipe) - i.d.	3/4	3/4	3/4
	with furnished 90° street elbow with field supplied (PVC coupling) - o.d.	3/4 slip x 3/4 Mipt 3/4 slip x 3/4 MPT	3/4 slip x 3/4 Mipt 3/4 slip x 3/4 MPT	3/4 slip x 3/4 Mipt 3/4 slip x 3/4 MPT
Indoor Blower	Wheel nom. diameter x width - in.	10 x 9	11 x10	11 x 11
	Motor output - hp	1/2	3/4	1.0
	Tons of add-on cooling	3	4	5
	Air Volume Range - cfm	545 - 1320	615 - 1805	835 - 1985
Electrical Data	Voltage	120 volts - 60 hertz - 1 phase		
	Blower motor full load amps	7.7	10.1	12.8
	Maximum overcurrent protection	15	20	20
Shipping Data	lbs. - 1 package	131	138	166

NOTE - Filters and provisions for mounting are not furnished and must be field provided.

¹ Annual Fuel Utilization Efficiency based on DOE test procedures and according to FTC labeling regulations. Isolated combustion system rating for non-weatherized furnaces.



NOTE - Due to Lennox' ongoing commitment to quality, Specifications, Ratings and Dimensions subject to change without notice and without incurring liability. Improper installation, adjustment, alteration, service or maintenance can cause property damage or personal injury. Installation and service must be performed by a qualified installer and servicing agency.



ML296UHV, ML296DFV - OPTIONAL ACCESSORIES

**RESIDENTIAL
PRODUCT CATALOG**

Page 5
January 2022
Supersedes June 2021

OPTIONAL ACCESSORIES - ORDER SEPARATELY

NOTE - FURNACES CANNOT BE TWINNED!

			"B" Width Models	"C" Width Models
CABINET ACCESSORIES				
Downflow Combustible Flooring Base - Downflow only			11M60	11M61
Horizontal Suspension Kit - Horizontal only			51W10	51W10
Return Air Base - Upflow only			50W98	50W99
CONDENSATE DRAIN KITS				
Condensate Drain Heat Cable	6 ft.		26K68	26K68
	24 ft.		26K69	26K69
Crawl Space Vent Drain Kit	US		51W18	51W18
	Canada		15Z70	15Z70
CONTROLS				
iComfort® M30 Smart Wi-Fi Thermostat			15Z69	15Z69
Outdoor Temperature Sensor			X2658	X2658
DOWNFLOW FILTER KITS				
Downflow Filter Cabinet		¹ No. and size of filter - in.	51W07 (2) 16 x 20 x 1	51W08 (2) 16 x 20 x 1
UPFLOW/HORIZONTAL FILTER KITS				
¹ Air Filter and Rack Kit	Horizontal (end)	Size of filter - in.	87L96 - 18 x 25 x 1	87L97 - 20 x 25 x 1
	Side Return	Single	44J22	44J22
		Ten Pack	66K63	66K63
		Size of filter - in.	16 x 25 x 1	16 x 25 x 1
TERMINATION KITS				
See Installation Instructions for specific venting information.				
Direct Vent	Concentric	US - 2 in.	71M80	69M29
		3 in.	---	60L46
		Canada - 2 in.	44W92	44W92
		3 in.	---	44W93
	Flush-Mount	US - 2, 2-1/2 or 3 in.	51W11	51W11
		Canada - 2, 2-1/2 or 3 in.	51W12	51W12
	Wall - Close Couple	US - 2 in.	22G44	---
		3 in.	44J40	44J40
	Wall - Close Couple WTK	Canada - 2 in.	30G28	---
		3 in.	81J20	81J20
Direct or Non-Direct Vent	Roof Termination Flashing Kit, (no vent pipe - 2 flashings)	2 in.	15F75	15F75
		3 in.	44J41	44J41
VENTING				
Flue Coupling		2 in.	17H92	17H92
Left Side Vent Kit		2 or 3 in.	87W73	87W73

¹ Cleanable polyurethane, frame-type filter.

² NOTE - The curved exhaust pipe furnished with the Left Side Vent Kit counts as one additional 2 in. diameter 90° elbow. When using 3 in. diameter pipe, the furnished curved exhaust pipe and field provided fittings to transition from 2 in. to 3 in. count as 20 feet of equivalent pipe on all units.

NOTE - Termination Kits (**44W92, 44W93, 30G28, 51W12, 81J20**) and Crawl Space Vent Drain Kit (**15Z70**) are certified to ULC S636 standard for use in Canada only.



ML296UHV, ML296DFV - OPTIONAL ACCESSORIES

**RESIDENTIAL
PRODUCT CATALOG**

Page 6
January 2022
Supersedes June 2021

GAS HEAT ACCESSORIES

Input	High Altitude Pressure Switch Kit		Natural Gas to LPG/Propane Kit	LPG/Propane to Natural Gas Kit	Natural Gas High Altitude Orifice Kit	LPG/Propane High Altitude Orifice Kit	Muffler (US Only)
	4501 - 7500 ft.	7501 - 10,000 ft.	0 - 7500 ft.	0 - 7500 ft.	7501 - 10,000 ft.	7501 - 10,000 ft.	
045	14A47	14A50	11K51	77W09	73W37	11K46	15Y66 (2-inch)
070	14A54 (upflow)	14A53 (upflow)	11K51	77W09	73W37	11K46	15Y66 (2-inch)
	14A55 (downflow)	14A56 (downflow)					
090	14A57 (upflow)	14A54	11K51	77W09	73W37	11K46	15Y66 (2-inch)
	14A54 (downflow)						
110	14A46	14A51	11K51	77W09	73W37	11K46	¹ 15Y66 (2-inch) 16A56 (3-inch)

¹ Two-inch diameter muffler (15Y66) is optional for 110 input model with a maximum vent pipe length of up to 29 ft.
Three-inch diameter muffler (16A56) is optional for 110 input model with a minimum vent pipe length of 30 ft.



GAS FURNACES ML196UHE MERIT® SERIES

RESIDENTIAL PRODUCT CATALOG

FEATURES

Heating System

- Lennox Duralok Plus™ Aluminized Steel Heat Exchanger Assembly
- Aluminized Steel Inshot Burners
- Gas Control Valve with 100% Safety Shutoff
- Flame Rollout Switches
- SureLight® Hot Surface Ignitor
- Combustion Air Inducer
- Limit Control

Direct Vent/Non-Direct Vent Sealed Combustion

- Direct Vent - Combustion air supplied from outdoors
- Non-Direct Vent - Combustion air supplied from indoors

Controls

- SureLight® Integrated Furnace Control
- 24 Volt Transformer
- Field Wiring Make-up Box

Power Saver™ Constant Torque Blower Motor

- High efficiency, multi-speed ECM (Electronically Commutated Motor)

Cabinet

- Upflow, downflow, horizontal-left or horizontal-right applications without any internal modifications to the unit.
- Pre-painted finish
- Foil-faced insulation on sides and back of heating compartment

Low Leakage Cabinet

- Less than 2%

Coil Match-up

- All furnaces match Lennox cased upflow indoor coils and horizontal indoor coils with same letter designation (A, B, C, D) as in the furnace model number

Upflow/Horizontal - Constant Torque Blower Motor
Direct/Non-Direct Vent
AFUE - 96% - Input - 30,000 to 132,000 Btuh
Page 7

January 2022
Supersedes June 2021



ACCESSORIES

- See page 11

Cabinet

- Condensate Kits
- Condensate Drain Heat Cable
- Crawl Space Vent Drain Kit
- Horizontal Suspension Kit
- Return Air Base

Controls

- Blower Motor Relay Kit
- iComfort® M30 Smart Wi-Fi Thermostat
- Twinning Panel/Twinning Kit

Filter Kits

- Air Filter and Rack Kits

Gas Heating

- Gas Conversion Kits
- High Altitude Orifice Kits
- High Altitude Pressure Switch Kits
- Termination Kits

Service Kits

- Night Service Kit

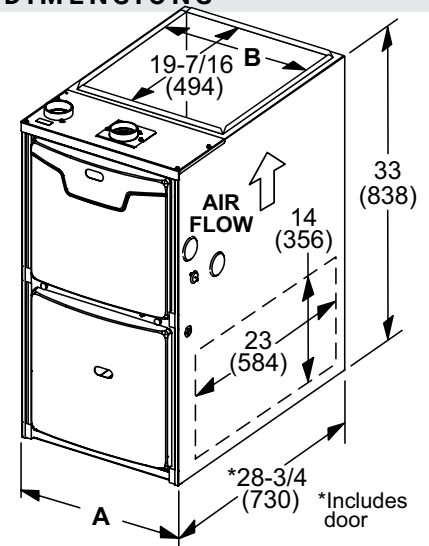
LIMITED WARRANTY

- Heat Exchanger - Twenty-years
- All other covered components - Five years

NOTE - Refer to Lennox Equipment Limited Warranty certificate included with equipment for detail.

Furnace Width	"B"	"C"
A Dimension	17-1/2 (446)	21 (533)
B Dimension	16-3/8 (416)	19-7/8 (454)
Bottom return	Width	16 (406)
	Depth	19-1/2 (495)
	23-1/2 (597)	23-1/2 (597)

DIMENSIONS



NOTE - Due to Lennox' ongoing commitment to quality, Specifications, Ratings and Dimensions subject to change without notice and without incurring liability. Improper installation, adjustment, alteration, service or maintenance can cause property damage or personal injury. Installation and service must be performed by a qualified installer and servicing agency.

SPECIFICATIONS

Gas Heating Performance	Model No.	ML196UH 030XE36B	ML196UH 045XE36B	ML196UH 070XE36B	ML196UH 070XE48B	ML196UH 090XE36C
	¹ AFUE	96%	96%	96%	96%	96%
	Input - Btuh	30,000	44,000	66,000	66,000	88,000
	Output - Btuh	29,000	42,800	63,900	63,900	85,600
	Temperature rise range - °F	25 - 55	35 - 65	35 - 65	30 - 60	45 - 75
Gas Manifold Pressure (in. w.g.) Nat. Gas / LPG/Propane		3.5 / 10	3.5 / 10	3.5 / 10	3.5 / 10	3.5 / 10
	High static - in. w.g.	0.5	0.5	0.5	0.5	0.5
Energy Star® Certified		Yes	Yes	Yes	Yes	Yes
Connections in.	Intake / Exhaust Pipe (PVC)	2 / 2	2 / 2	2 / 2	2 / 2	2 / 2
	Gas pipe size IPS	1/2	1/2	1/2	1/2	1/2
	Condensate Drain Trap (PVC pipe) - i.d.	3/4	3/4	3/4	3/4	3/4
	with furnished 90° street elbow	3/4 slip x 3/4 Mipt				
	with field supplied (PVC coupling) - o.d.	3/4 slip x 3/4 MPT				
Indoor Blower	Wheel nom. dia. x width - in.	10 x 8	10 x 8	10 x 8	11-1/2 x 10	10 x 8
	Motor Type	DC Brushless	DC Brushless	DC Brushless	DC Brushless	DC Brushless
	Motor output - hp	1/2	1/2	1/2	3/4	1/2
	Tons of add-on cooling	1.5 - 3	1.5 - 3	1.5 - 3	2 - 4	1.5 - 3
	Air Volume Range - cfm	175 - 1435	520 - 1345	550 - 1380	500 - 1710	460 - 1470
Electrical Data	Voltage	120 volts - 60 hertz - 1 phase				
	Blower motor full load amps	6.8	6.8	6.8	8.4	6.8
	Maximum overcurrent protection	15	15	15	15	15
Shipping Data	lbs. - 1 package	120	124	129	132	142

SPECIFICATIONS

Gas Heating Performance	Model No.	ML196UH 090XE48C	ML196UH 090XE60C	ML196UH 110XE60C	ML196UH 135XE60D
	¹ AFUE	96%	96%	96%	96%
	Input - Btuh	88,000	88,000	110,000	132,000
	Output - Btuh	85,600	85,600	107,200	127,000
	Temperature rise range - °F	50 - 80	35 - 65	45 - 75	45 - 75
Gas Manifold Pressure (in. w.g.) Nat. Gas / LPG/Propane		3.5 / 10	3.5 / 10	3.5 / 10	3.5 / 10
	High static - in. w.g.	0.5	0.5	0.5	0.5
Energy Star® Certified		Yes	Yes	Yes	Yes
Connections in.	Intake / Exhaust Pipe (PVC)	2 / 2	2 / 2	2 / 2	2 / 2
	Gas pipe size IPS	1/2	1/2	1/2	1/2
	Condensate Drain Trap (PVC pipe) - i.d.	3/4	3/4	3/4	3/4
	with furnished 90° street elbow	3/4 slip x 3/4 Mipt			
	with field supplied (PVC coupling) - o.d.	3/4 slip x 3/4 MPT			
Indoor Blower	Wheel nom. dia. x width - in.	10 x 10	11 x 11	11-1/2 x 10	11 x 11
	Motor Type	DC Brushless	DC Brushless	DC Brushless	DC Brushless
	Motor output - hp	3/4	1	1	1
	Tons of add-on cooling	2.5 - 4	3-5	3 - 5	3-5
	Air Volume Range - cfm	760 - 1740	1050 - 2105	1055 - 2220	1310 - 2400
Electrical Data	Voltage	120 volts - 60 hertz - 1 phase			
	Blower motor full load amps	8.4	10.9	10.9	10.9
	Maximum overcurrent protection	15	15	15	15
Shipping Data	lbs. - 1 package	152	152	164	174

NOTE - Filters and provisions for mounting are not furnished and must be field provided.

¹ Annual Fuel Utilization Efficiency based on DOE test procedures and according to FTC labeling regulations. Isolated combustion system rating for non-weatherized furnaces.

NOTE - Due to Lennox' ongoing commitment to quality, Specifications, Ratings and Dimensions subject to change without notice and without incurring liability. Improper installation, adjustment, alteration, service or maintenance can cause property damage or personal injury. Installation and service must be performed by a qualified installer and servicing agency.



GAS FURNACES ML196DFE MERIT® SERIES

RESIDENTIAL PRODUCT CATALOG

FEATURES

Heating System

- Lennox Duralok Plus™ Aluminized Steel Heat Exchanger Assembly
- Aluminized Steel Inshot Burners
- Gas Control Valve with 100% Safety Shutoff
- Flame Rollout Switches
- SureLight® Hot Surface Ignitor
- Combustion Air Inducer
- Limit Control

Direct Vent/Non-Direct Vent Sealed Combustion

- Direct Vent - Combustion air supplied from outdoors
- Non-Direct Vent - Combustion air supplied from indoors

Controls

- SureLight® Integrated Furnace Control
- 24 Volt Transformer
- Field Wiring Make-up Box

Power Saver™ Constant Torque Blower Motor

- High efficiency, multi-speed ECM (Electronically Commutated Motor)

Cabinet

- Downflow applications
- Pre-painted finish.
- Foil-faced insulation on sides and back of heating compartment

Low Leakage Cabinet

- Less than 2%

Coil Match-up

- All Lennox downflow indoor coils will physically match the furnace supply air opening with the same letter designation (A, B, C, D) as in the furnace model number



Downflow - Constant Torque Blower Motor
Direct/Non-Direct Vent
AFUE - 96% - Input - 44,000 to 110,000 Btuh
Page 9

January 2022

Supersedes June 2021

ACCESSORIES

- See page 11

Cabinet

- Downflow Combustible Flooring Base
- Condensate Kits
- Condensate Drain Heat Cable
- Crawl Space Vent Drain Kit

Controls

- Blower Motor Relay Kit
- iComfort® M30 Smart Wi-Fi Thermostat
- Twinning Panel/Twinning Kit

Filter Kits

- Downflow Filter Kits

Gas Heating

- Gas Conversion Kits
- High Altitude Orifice Kits
- High Altitude Pressure Switch Kits
- Termination Kits

Service Kits

- Night Service Kit

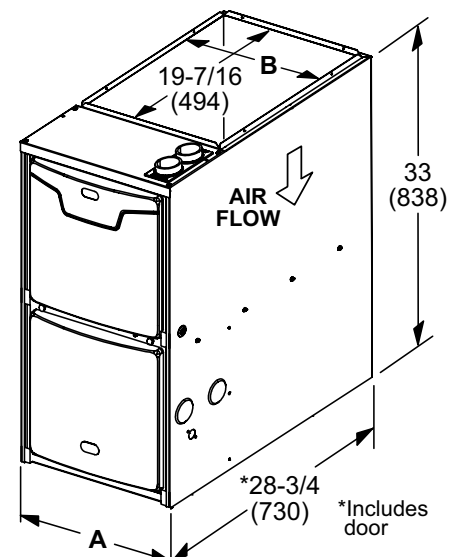
LIMITED WARRANTY

- Heat Exchanger - Twenty-years
- All other covered components - Five years

NOTE - Refer to Lennox Equipment Limited Warranty certificate included with equipment for detail.

Furnace Width		"B"	"C"
A Dimension	Width	17-1/2 (446)	21 (533)
	Depth	19-1/4 (489)	19-1/4 (489)
B Dimension	Width	16-3/8 (416)	19-7/8 (454)
	Depth	19-1/4 (489)	19-1/4 (489)
Bottom supply	Width	16 (406)	19-1/2 (495)
	Depth	19-1/4 (489)	19-1/4 (489)

DIMENSIONS



NOTE - Due to Lennox' ongoing commitment to quality, Specifications, Ratings and Dimensions subject to change without notice and without incurring liability. Improper installation, adjustment, alteration, service or maintenance can cause property damage or personal injury. Installation and service must be performed by a qualified installer and servicing agency.

SPECIFICATIONS

Gas Heating Performance		Model No.	ML196DF045XE36B	ML196DF070XE48B	ML196DF090XE48C	ML196DF110XE60C
		¹ AFUE	96%	96%	96%	96%
		Input - Btuh	44,000	66,000	88,000	110,000
		Output - Btuh	42,000	64,000	85,000	106,000
		Temperature rise range - °F	30 - 60	35 - 65	50 - 80	40 - 70
		Gas Manifold Pressure (in. w.g.) Nat. Gas / LPG/Propane	3.5 / 10	3.5 / 10	3.5 / 10	3.5 / 10
		High static - in. w.g.	0.5	0.5	0.5	0.5
Energy Star® Certified			Yes	Yes	Yes	Yes
Connections in.	Intake / Exhaust Pipe (PVC)		2 / 2	2 / 2	2 / 2	2 / 2
	Gas pipe size IPS		1/2	1/2	1/2	1/2
	Condensate Drain Trap (PVC pipe) - i.d.		3/4	3/4	3/4	3/4
	with furnished 90° street elbow		3/4 slip x 3/4 Mipt	3/4 slip x 3/4 Mipt	3/4 slip x 3/4 Mipt	3/4 slip x 3/4 Mipt
	with field supplied (PVC coupling) - o.d.		3/4 slip x 3/4 MPT	3/4 slip x 3/4 MPT	3/4 slip x 3/4 MPT	3/4 slip x 3/4 MPT
Indoor Blower	Wheel nom. diameter x width - in.		10 x 8	11-1/2 x 10	10 x 10	11 x 11
	Motor Type		DC Brushless	DC Brushless	DC Brushless	DC Brushless
	Motor output - hp		1/2	3/4	3/4	1
	Tons of add-on cooling		1.5 - 3	2 - 4	2 - 4	3 - 5
	Air Volume Range - cfm		505 - 1455	525 - 1720	860 - 1760	1010 - 3115
Electrical Data	Voltage		120 volts - 60 hertz - 1 phase			
	Blower motor full load amps		6.8	8.4	8.4	10.9
	Maximum overcurrent protection		15	15	15	15
Shipping Data	lbs. - 1 package		126	139	154	162

NOTE - Filters and provisions for mounting are not furnished and must be field provided.

¹ Annual Fuel Utilization Efficiency based on DOE test procedures and according to FTC labeling regulations. Isolated combustion system rating for non-weatherized furnaces.



NOTE - Due to Lennox' ongoing commitment to quality, Specifications, Ratings and Dimensions subject to change without notice and without incurring liability. Improper installation, adjustment, alteration, service or maintenance can cause property damage or personal injury. Installation and service must be performed by a qualified installer and servicing agency.



ML196UHE, ML196DFE - OPTIONAL ACCESSORIES

**RESIDENTIAL
PRODUCT CATALOG**

Page 11
January 2022
Supersedes June 2021

OPTIONAL ACCESSORIES - ORDER SEPARATELY

			"B" Width	"C" Width	"D" Width
CABINET ACCESSORIES					
Downflow Combustible Flooring Base - Downflow only			11M60	11M61	11M62
Horizontal Suspension Kit - Horizontal only			51W10	51W10	51W10
Return Air Base - Upflow only			50W98	50W99	51W00
CONDENSATE DRAIN KITS					
Condensate Drain Heat Cable	6 ft.		26K68	26K68	26K68
	24 ft.		26K69	26K69	26K69
Crawl Space Vent Drain Kit	U.S.		51W18	51W18	51W18
	Canada		15Z70	15Z70	15Z70
CONTROLS					
Blower Motor Relay Kit (for two-stage outdoor units)			85W66	85W66	85W66
Twinning Panel			Y3653	Y3653	Y3653
Twinning Kit			16W72	16W72	16W72
DOWNFLOW FILTER KITS					
Downflow Filter Cabinet			51W07	51W08	---
1 No. and size of filter - in.			(2) 16 x 20 x 1	(2) 16 x 20 x 1	---
UPFLOW/HORIZONTAL FILTER KITS					
1 Air Filter and Rack Kit	Horizontal (end)	Size of filter - in.	87L96 - 18 x 25 x 1	87L97 - 20 x 25 x 1	87L98 - 25 x 25 x 1
		Single	44J22	44J22	44J22
	Side Return	Ten Pack	66K63	66K63	66K63
		Size of filter - in.	16 x 25 x 1	16 x 25 x 1	16 x 25 x 1
SERVICE KIT					
Night Service Kit			84W48	84W48	84W48
TERMINATION KITS					
See Installation Instructions for specific venting information.					
Direct Vent	Concentric	U.S. - 2 in.	71M80	69M29	---
		3 in.	---	60L46	60L46
		Canada - 2 in.	44W92	44W92	---
		3 in.	---	44W93	44W93
	Flush-Mount	U.S. - 2, 2-1/2 or 3 in.	51W11	51W11	51W11
		Canada - 2, 2-1/2 or 3 in.	51W12	51W12	51W12
	Wall - Close Couple	2 in.	22G44	---	---
		3 in.	44J40	44J40	44J40
	Close Couple WTK	2 in.	30G28	---	---
		3 in.	81J20	81J20	81J20
Direct or Non-Direct Vent	Roof Termination Flashing Kit, (no vent pipe - 2 flashings)	2 in.	15F75	15F75	---
		3 in.	44J41	44J41	44J41
VENTING					
Flue Coupling			2 in.	17H92	17H92

¹ Cleanable polyurethane frame type filter.

NOTE - Termination Kits (44W92, 44W93, 30G28, 51W12, 81J20) and Crawl Space Vent Drain Kit (15Z70) are certified to ULC S636 standard for use in Canada only.



ML196UHE, ML196DFE - OPTIONAL ACCESSORIES

**RESIDENTIAL
PRODUCT CATALOG**

Page 12
January 2022
Supersedes June 2021

GAS HEAT ACCESSORIES

Input	High Altitude Pressure Switch Kit		Natural Gas to LPG/Propane Kit	LPG/Propane to Natural Gas Kit	Natural Gas High Altitude Orifice Kit	LPG/Propane High Altitude Orifice Kit	Muffler (US Only)
	4501 - 7500 ft.	7501 - 10,000 ft.	0 - 7500 ft.	0 - 7500 ft.	7501 - 10,000 ft.	7501 - 10,000 ft.	
030	11U65	11U66	17H63	N/A	14C90	17H66	15Y66 (2-inch)
045	11U65	11U66	11K49	73W81	73W37	11K44	15Y66 (2-inch)
070	11U70	11U68	11K49	73W81	73W37	11K44	15Y66 (2-inch)
090	11U70 (UH) 11U71 (DF)	11U64 (UH) 11U68 (DF)	11K49	73W81	73W37	11K44	15Y66 (2-inch)
110	11U71 (UH) 11U70 (DF)	11U64 (UH) 11U68 (DF)	11K49	73W81	73W37	11K44	¹ 15Y66 (2-inch) 16A56 (3-inch)
135	11U70	11U68	11K49	73W82	73W37	11K44	16A56 (3-inch)

¹ Two-inch diameter muffler (15Y66) is optional for 110 input model with a maximum vent pipe length of up to 29 ft.
Three-inch diameter muffler (16A56) is optional for 110 input model with a minimum vent pipe length of 30 ft.



GAS FURNACES ML193UHE MERIT® SERIES

RESIDENTIAL PRODUCT CATALOG

FEATURES

Heating System

- Lennox Duralok Plus™ Aluminized Steel Heat Exchanger Assembly
- Aluminized Steel Inshot Burners
- Gas Control Valve with 100% Safety Shutoff
- Flame Rollout Switch
- SureLight® Hot Surface Ignitor
- Combustion Air Inducer
- Limit Control

Direct Vent/Non-Direct Vent Sealed Combustion

- Direct Vent - Combustion air supplied from outdoors
- Non-Direct Vent - Combustion air supplied from indoors

Controls

- SureLight® Integrated Furnace Control
- Built-in Twinning Capability
- 24 Volt Transformer
- Field Wiring Make-up Box

Power Saver™ Constant Torque Blower Motor

- High efficiency, multi-speed ECM (Electronically Commutated Motor)

Cabinet

- Upflow/Horizontal applications
- Pre-painted finish
- Foil-faced insulation on sides and back of heating compartment

Low Leakage Cabinet

- Less than 2%

Coil Match-up

- All furnaces match Lennox cased upflow indoor coils and horizontal indoor coils with same letter designation (A, B, C, D) as in the furnace model number



Upflow/Horizontal - Direct/Non-Direct Vent
Constant Torque Blower Motor - AFUE - 93%
Input - 30,000 to 110,000 Btuh

Page 13

January 2022

Supersedes June 2021

ACCESSORIES

- See page 17

Cabinet

- Condensate Kits
- Condensate Drain Heat Cable
- Crawl Space Vent Drain Kit
- Horizontal Suspension Kit
- Return Air Base

Controls

- Blower Relay Kit
- iComfort® M30 Smart Wi-Fi Thermostat
- Twinning Panel/Twinning Kit

Filter Kits

- Air Filter and Rack Kits

Gas Heating

- Gas Conversion Kits
- High Altitude Pressure Switch Kits
- High Altitude Orifice Kits
- Termination Kits

Service Kits

- Night Service Kit

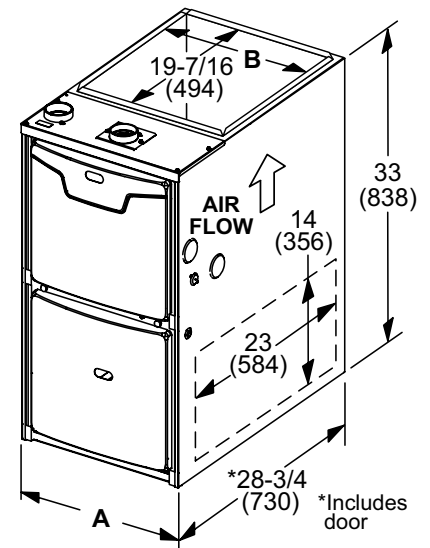
LIMITED WARRANTY

- Heat Exchanger - Twenty-years
- All other covered components - Five years

NOTE - Refer to Lennox Equipment Limited Warranty certificate included with equipment for details.

Furnace Width	"B"	"C"
A Dimension	17-1/2 (446)	21 (533)
B Dimension	16-3/8 (416)	19-7/8 (454)
Bottom return	Width	16 (406)
	Depth	19-1/2 (495)
	23-1/2 (597)	23-1/2 (597)

DIMENSIONS



NOTE - Due to Lennox' ongoing commitment to quality, Specifications, Ratings and Dimensions subject to change without notice and without incurring liability. Improper installation, adjustment, alteration, service or maintenance can cause property damage or personal injury. Installation and service must be performed by a qualified installer and servicing agency.

SPECIFICATIONS

Gas	Model No.	ML193UH030XE36B	ML193UH045XE36B	ML193UH070XE36B	ML193UH090XE36C
Heating	AHRI Reference No.	20256877	20256878	20256879	20256880
Performance	¹ AFUE	93%	93%	93%	93%
	Input - Btuh	30,000	44,000	66,000	88,000
	Output - Btuh	29,000	42,000	63,000	84,000
	Temperature rise range - °F	25 - 55	30 - 60	40 - 70	50 - 80
	Gas Manifold Pressure (in. w.g.)	3.5 / 10	3.5 / 10.0	3.5 / 10.0	3.5 / 10
	Nat. Gas / LPG/Propane				
	High static - in. w.g.	0.5	0.5	0.5	0.5
Connections	Intake / Exhaust Pipe (PVC)	2 / 2	2 / 2	2 / 2	2 / 2
in.	Gas pipe size IPS	1/2	1/2	1/2	1/2
	Condensate Drain Trap (PVC pipe) - i.d.	3/4	3/4	3/4	3/4
	with furnished 90° street elbow	3/4 slip x 3/4 Mipt	3/4 slip x 3/4 Mipt	3/4 slip x 3/4 Mipt	3/4 slip x 3/4 Mipt
	with field supplied (PVC coupling) - o.d.	3/4 slip x 3/4 MPT	3/4 slip x 3/4 MPT	3/4 slip x 3/4 MPT	3/4 slip x 3/4 MPT
Indoor	Wheel nom. dia. x width - in.	10 x 8	10 x 8	10 x 8	10 x 8
Blower	Motor Type	DC Brushless	DC Brushless	DC Brushless	DC Brushless
	Motor output - hp	1/2	1/2	1/2	1/2
	Tons of add-on cooling	1.5 - 3	1.5 - 3	1.5 - 3	1.5 - 3
	Air Volume Range - cfm	175 - 1435	355 - 1420	355 - 1430	405 - 1410
Electrical	Voltage	120 volts - 60 hertz - 1 phase			
Data	Blower motor full load amps	6.8	6.8	6.8	6.8
	Maximum overcurrent protection	15	15	15	15
Shipping Data	lbs. - 1 package	128	128	132	146

SPECIFICATIONS

Gas	Model No.	ML193UH090XE48C	ML193UH110XE48C	ML193UH110XE60C
Heating	AHRI Reference No.	20256881	20256882	20256883
Performance	¹ AFUE	93%	93%	93%
	Input - Btuh	88,000	110,000	110,000
	Output - Btuh	84,000	104,000	105,000
	Temperature rise range - °F	45 - 75	50 - 80	45 - 75
	Gas Manifold Pressure (in. w.g.)	3.5 / 10.0		3.5 / 10
	Nat. Gas / LPG/Propane		3.5 / 10	3.5 / 10
	High static - in. w.g.	0.5	0.5	0.5
Connections	Intake / Exhaust Pipe (PVC)	2 / 2	2 / 2	2 / 2
in.	Gas pipe size IPS	1/2	1/2	1/2
	Condensate Drain Trap (PVC pipe) - i.d.	3/4	3/4	3/4
	with furnished 90° street elbow	3/4 slip x 3/4 Mipt	3/4 slip x 3/4 Mipt	3/4 slip x 3/4 Mipt
	with field supplied (PVC coupling) - o.d.	3/4 slip x 3/4 MPT	3/4 slip x 3/4 MPT	3/4 slip x 3/4 MPT
Indoor	Wheel nom. dia. x width - in.	10 x 10	10 x 10	11-1/2 x 10
Blower	Motor Type	DC Brushless	DC Brushless	DC Brushless
	Motor output - hp	3/4	3/4	1
	Tons of add-on cooling	2.5 - 4	2.5 - 4	3 - 5
	Air Volume Range - cfm	830 - 1710	850 - 1750	1085 - 2150
Electrical	Voltage	120 volts - 60 hertz - 1 phase		
Data	Blower motor full load amps	8.4	8.4	10.9
	Maximum overcurrent protection	15	15	15
Shipping Data	lbs. - 1 package	150	162	168

NOTE - Filters and provisions for mounting are not furnished and must be field provided.

¹ Annual Fuel Utilization Efficiency based on DOE test procedures and according to FTC labeling regulations.

Isolated combustion system rating for non-weatherized furnaces.



HRAI
MEMBER COMPANY



NOTE - Due to Lennox' ongoing commitment to quality, Specifications, Ratings and Dimensions subject to change without notice and without incurring liability.

Improper installation, adjustment, alteration, service or maintenance can cause property damage or personal injury.

Installation and service must be performed by a qualified installer and servicing agency.

© 2022 Lennox Industries Inc.



GAS FURNACES ML193DFE MERIT® SERIES

RESIDENTIAL PRODUCT CATALOG

FEATURES

Heating System

- Lennox Duralok Plus™ Aluminized Steel Heat Exchanger Assembly
- Aluminized Steel Inshot Burners
- Gas Control Valve with 100% Safety Shutoff
- Flame Rollout Switch
- SureLight® Hot Surface Ignitor
- Combustion Air Inducer
- Limit Control

Direct Vent/Non-Direct Vent Sealed Combustion

- Direct Vent - Combustion air supplied from outdoors
- Non-Direct Vent - Combustion air supplied from indoors

Controls

- SureLight® Integrated Furnace Control
- Built-in Twinning Capability
- 24 Volt Transformer
- Field Wiring Make-up Box

Power Saver™ Constant Torque Blower Motor

- High efficiency, multi-speed ECM (Electronically Commutated Motor)

Cabinet

- Downflow applications
- Pre-painted cabinet finish
- Foil-faced insulation on sides and back of heating compartment

Low Leakage Cabinet

- Less than 2%

Coil Match-up

- All Lennox downflow indoor coils will physically match the furnace supply air opening with the same letter designation (A, B, C, D) as in the furnace model number



LIMITED WARRANTY

- Heat Exchanger - Twenty-years
- All other covered components - Five years

NOTE - Refer to Lennox Equipment Limited Warranty certificate included with equipment for details.

Furnace Width		"B"	"C"
A Dimension		17-1/2 (446)	21 (533)
B Dimension		16-3/8 (416)	19-7/8 (454)
Bottom supply	Width	16 (406)	19-1/2 (495)
	Depth	19-1/4 (489)	19-1/4 (489)

Downflow - Direct/Non-Direct Vent
Constant Torque Blower Motor - AFUE - 93%
Input - 44,000 to 88,000 Btuh

Page 15

January 2022

Supersedes June 2021

ACCESSORIES

- See page 17

Cabinet

- Condensate Kits
- Condensate Drain Heat Cable
- Crawl Space Vent Drain Kit
- Downflow Combustible Flooring Base

Controls

- Blower Relay Kit
- iComfort® M30 Smart Wi-Fi Thermostat
- Twinning Panel/Twinning Kit

Filter Kits

- Downflow Filter Kits

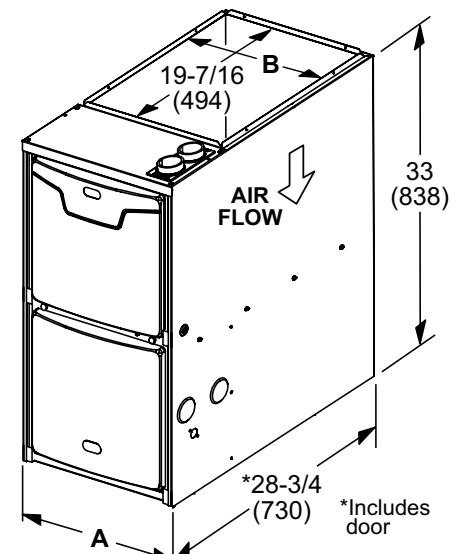
Gas Heating

- Gas Conversion Kits
- High Altitude Pressure Switch Kits
- High Altitude Orifice Kits
- Termination Kits

Service Kits

- Night Service Kit

DIMENSIONS



NOTE - Due to Lennox' ongoing commitment to quality, Specifications, Ratings and Dimensions subject to change without notice and without incurring liability. Improper installation, adjustment, alteration, service or maintenance can cause property damage or personal injury. Installation and service must be performed by a qualified installer and servicing agency.

SPECIFICATIONS

		Model No.	ML193DF045XE36B	ML193DF070XE36B	ML193DF090XE48C
Gas Heating Performance	AHRI Reference No.		20556884	20556885	20556886
	¹ AFUE		93%	93%	93%
	Input - Btuh		44,000	66,000	88,000
	Output - Btuh		42,000	63,000	84,000
	Temperature rise range - °F		30 - 60	40 - 70	45 - 75
	Gas Manifold Pressure (in. w.g.) Nat. Gas / LPG/Propane		3.5 / 10.0	3.5 / 10.0	3.5 / 10.0
	High static - in. w.g.		0.50	0.50	0.50
	Connections in.	Intake / Exhaust Pipe (PVC)		2 / 2	2 / 2
Gas pipe size IPS			1/2	1/2	1/2
Condensate Drain Trap (PVC pipe) - i.d.			3/4	3/4	3/4
with furnished 90° street elbow			3/4 slip x 3/4 Mipt	3/4 slip x 3/4 Mipt	3/4 slip x 3/4 Mipt
with field supplied (PVC coupling) - o.d.			3/4 slip x 3/4 MPT	3/4 slip x 3/4 MPT	3/4 slip x 3/4 MPT
Indoor Blower	Wheel nom. dia. x width - in.		10 x 8	10 x 8	10 x 10
	Motor output - hp		1/2	1/2	3/4
	Tons of add-on cooling		1.5 - 3	1.5 - 3	2.5 - 4
	Air Volume Range - cfm		335 - 1430	340 - 1415	825 - 1720
Electrical Data	Voltage	120 volts - 60 hertz - 1 phase			
	Blower motor full load amps		6.8	6.8	8.4
	Maximum overcurrent protection		15	15	15
Shipping Data	lbs. - 1 package		130	134	152

NOTE - Filters and provisions for mounting are not furnished and must be field provided.

¹ Annual Fuel Utilization Efficiency based on DOE test procedures and according to FTC labeling regulations. Isolated combustion system rating for non-weatherized furnaces.



HRAI
MEMBER COMPANY



NOTE - Due to Lennox' ongoing commitment to quality, Specifications, Ratings and Dimensions subject to change without notice and without incurring liability. Improper installation, adjustment, alteration, service or maintenance can cause property damage or personal injury. Installation and service must be performed by a qualified installer and servicing agency.



ML193UHE, ML193DFE - OPTIONAL ACCESSORIES

**RESIDENTIAL
PRODUCT CATALOG**

Page 17
January 2022
Supersedes June 2021

OPTIONAL ACCESSORIES - ORDER SEPARATELY

			"B" Width Models	"C" Width Models
CABINET ACCESSORIES				
Downflow Combustible Flooring Base			11M60	11M61
Horizontal Suspension Kit - Horizontal only			51W10	51W10
Return Air Base - Upflow only			50W98	50W99
High Performance Economizer (Commercial Only)			10U53	10U53
CONDENSATE DRAIN KITS				
Condensate Drain Heat Cable	6 ft.		26K68	26K68
	24 ft.		26K69	26K69
Crawl Space Vent Drain Kit	US		51W18	51W18
	Canada		15Z70	15Z70
CONTROLS				
Blower Relay Kit (for two-stage outdoor units)			85W66	85W66
iComfort® M30 Smart Wi-Fi Thermostat			15Z69	15Z69
Outdoor Temperature Sensor			X2658	X2658
Twinning Panel			Y3653	Y3653
Twinning Kit			16W72	16W72
DOWNFLOW FILTER KITS				
Downflow Filter Cabinet			51W07	51W08
¹ No. and Size of filter - in.			(2) 16 x 20 x 1	(2) 16 x 20 x 1
UPFLOW/HORIZONTAL FILTER KITS				
¹ Air Filter and Rack Kit	Horizontal (end)	Size of filter - in.	87L96 - 18 x 25 x 1	87L97 - 20 x 25 x 1
	Side Return	Single	44J22	44J22
		Ten Pack	66K63	66K63
		Size of filter - in.	16 x 25 x 1	16 x 25 x 1
NIGHT SERVICE KIT				
Night Service Kit			84W48	84W48
TERMINATION KITS				
See Installation Instructions for specific venting information.				
Direct Vent	Concentric	US - 2 in.	71M80	69M29
		3 in.	---	60L46
		Canada - 2 in.	44W92	44W92
		3 in.	---	44W93
	Flush-Mount	US - 2, 2-1/2 or 3 in.	51W11	51W11
		Canada - 2, 2-1/2 or 3 in.	51W12	51W12
	Wall - Close Couple	US - 2 in.	22G44	---
		3 in.	44J40	44J40
	Wall - Close Couple WTK	Canada - 2 in.	30G28	---
		3 in.	81J20	81J20
Direct or Non-Direct Vent	Roof Termination Flashing Kit, (no vent pipe - 2 flashings)	2 in.	15F75	15F75
		3 in.	44J41	44J41
VENTING				
Flue Coupling		2 in.	17H92	17H92

¹ Cleanable polyurethane frame type filter.

NOTE - Termination Kits (44W92, 44W93, 30G28, 51W12, 81J20) and Crawl Space Vent Drain Kit (15Z70) are certified to ULC S636 standard for use in Canada only.



ML193UHE, ML193DFE - OPTIONAL ACCESSORIES

**RESIDENTIAL
PRODUCT CATALOG**

Page 18
January 2022
Supersedes June 2021

GAS HEAT ACCESSORIES

Input	High Altitude Pressure Switch Kit		Natural Gas to LPG/Propane Kit	LPG/Propane to Natural Gas Kit	Natural Gas High Altitude Orifice Kit	LPG/Propane High Altitude Orifice Kit	Muffler (US Only)
	4501 - 7500 ft.	7501 - 10,000 ft.	0 - 7500 ft.	0 - 7500 ft.	7501 - 10,000 ft.	7501 - 10,000 ft.	
030	11U65	11U66	17H63	N/A	14C90	17H66	15Y66 (2-inch)
045	11U65	11U66	11K49	73W81	73W37	11K44	15Y66 (2-inch)
070	11U65	11U66	11K49	73W81	73W37	11K44	15Y66 (2-inch)
090	11U65	11U66	11K49	73W81	73W37	11K44	15Y66 (2-inch)
110	11U65	11U66	11K49	73W81	73W37	11K44	² 15Y66 (2-inch) 16A56 (3-inch)

² Two-inch diameter muffler (15Y66) is optional for 110 input model with a maximum vent pipe length of up to 29 ft.
Three-inch diameter muffler (16A56) is optional for 110 input model with a minimum vent pipe length of 30 ft.



GAS FURNACES ML180UHV MERIT® SERIES

RESIDENTIAL PRODUCT CATALOG

FEATURES

Heating System

- Lennox Duralok™ Aluminized Steel Heat Exchanger Assembly
- Aluminized Steel Inshot Burners
- Gas Control Valve with 100% Safety Shutoff
- Flame Rollout Switches
- Hot Surface, Nitride Ignitor
- Combustion Air Inducer
- Limit Control

Controls

- Integrated Furnace Control
- 24 Volt Transformer
- Field Wiring Make-up Box

Variable-Speed Blower Motor

- High efficiency, variable speed ECM (Electronically Commutated Motor)
- Maintains specified air volume from 0 though 0.80 in. w.g. (heating) and 0 through 1.0 in. w.g. (Cooling) static range

Variable Speed Direct Drive Blower

- Each blower assembly is statically and dynamically balanced

Cabinet

- Upflow/Horizontal applications
- Pre-painted finish
- Fully insulated cabinet with foil-faced insulation on sides and back of heating compartment and mat-faced insulation in blower compartment

Low Leakage Cabinet

- Less than 2%

Coil Match-up

- All furnaces match Lennox cased upflow indoor coils and horizontal indoor coils with same letter designation (A, B, C, D) as in the furnace model number



Upflow/Horizontal - Variable Speed Blower
AFUE - 80%
Input - 30,000 to 110,000 Btuh
Page 19

January 2022
Supersedes June 2021

NOTE - Not Available In Canada!
NOTE - Furnaces Cannot Be Twinned!

ACCESSORIES

- See page 21
- Cabinet**
 - Horizontal Suspension Kit
 - Return Air Base
- Controls**
 - iComfort® M30 Smart Wi-Fi Thermostat
- Filter Kits**
 - Air Filter and Rack Kits
- Gas Heating**
 - Gas Conversion Kits
 - High Altitude Orifice Kit (natural gas only)
 - High Altitude Pressure Switch Kit
- Service Kits**
 - Night Service Kit
- Venting**
 - Vent Adaptor (Upflow Applications Only)

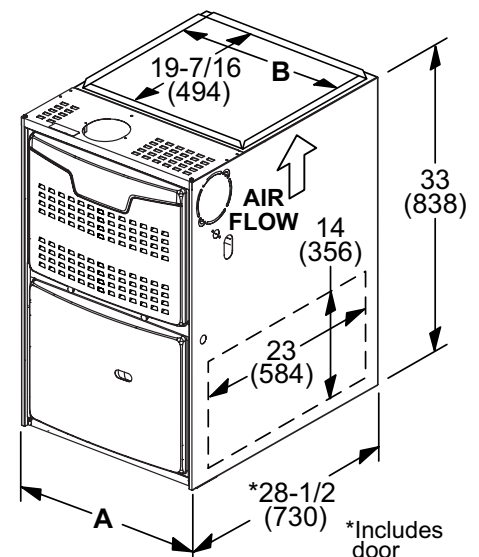
LIMITED WARRANTY

- Heat Exchanger - Twenty years
- All other covered components - Five years

NOTE - Refer to Lennox Equipment Limited Warranty certificate included with equipment for details.

Furnace Width	"A"	"B"	"C"
A Dimension	14-1/2 (368)	17-1/2 (446)	21 (533)
B Dimension	13-3/8 (340)	16-3/8 (416)	19-7/8 (454)
Bottom Width return	13 (330)	16 (406)	19-1/2 (495)
Depth	23-1/2 (597)	23-1/2 (597)	23-1/2 (597)

DIMENSIONS



NOTE - Due to Lennox' ongoing commitment to quality, Specifications, Ratings and Dimensions subject to change without notice and without incurring liability. Improper installation, adjustment, alteration, service or maintenance can cause property damage or personal injury. Installation and service must be performed by a qualified installer and servicing agency.

SPECIFICATIONS

Gas Heating Performance		Model No.	ML180UH030V36A	ML180UH045V36A	ML180UH070V36A	ML180UH070V36B
		¹ AFUE	80%	80%	80%	80%
		Input - Btuh	30,000	44,000	66,000	66,000
		Output - Btuh	24,430	36,100	53,400	53,400
		Temperature rise range - °F	25 - 55	15 - 45	30 - 60	30 - 60
		Gas Manifold Pressure (in. w.g.) Nat. Gas / LPG/Propane	3.5 / 10.0	3.5 / 10.0	3.5 / 10.0	3.5 / 10.0
High Static - in. w.g.			0.80	0.80	0.80	0.80
Connections in.	Flue connection - in. round		4	4	4	4
	Gas pipe size IPS		1/2	1/2	1/2	1/2
Indoor Blower	Wheel nom. dia. x width - in.		10 x 7	10 x 7	10 x 7	10 x 8
	Motor output - hp		1/2	1/2	1/2	1/2
	Tons of add-on cooling		1.5 - 3	1.5 - 3	1.5 - 3	1.5 - 3
	Air Volume Range - cfm		380 - 1320	380 - 1320	400 - 1345	370 - 1290
Electrical Data	Voltage		120 volts - 60 hertz - 1 phase			
	Blower motor full load amps		7.7	7.7	7.7	7.7
	Maximum overcurrent protection		15	15	15	15
Shipping Data	lbs. - 1 package		111	111	126	127

NOTE - Filters and provisions for mounting are not furnished and must be field provided.

¹ Annual Fuel Utilization Efficiency based on DOE test procedures and according to FTC labeling regulations. Isolated combustion system rating for non-weatherized furnaces.**SPECIFICATIONS**

Gas Heating Performance		Model No.	ML180UH070V48B	ML180UH090V48B	ML180UH110V60C
		¹ AFUE	80%	80%	80%
		Input - Btuh	66,000	88,000	110,000
		Output - Btuh	53,400	71,500	89,700
		Temperature rise range - °F	30 - 60	35 - 65	35 - 65
		Gas Manifold Pressure (in. w.g.) Nat. Gas / LPG/Propane	3.5 / 10.0	3.5 / 10.0	3.5 / 10.0
High Static - in. w.g.			0.50	0.50	0.50
Connections in.	Flue connection - in. round		4	4	4
	Gas pipe size IPS		1/2	1/2	1/2
Indoor Blower	Wheel nom. dia. x width - in.		11-1/2 x 9	11-1/2 x 9	11-1/2 x 10
	Motor output - hp		3/4	3/4	1
	Tons of add-on cooling		2.5 - 4	2.5 - 4	3 - 5
	Air Volume Range - cfm		430 - 1850	650 - 1740	930 - 2180
Electrical Data	Voltage		120 volts - 60 hertz - 1 phase		
	Blower motor full load amps		8.5	8.5	11.5
	Maximum overcurrent protection		15	15	20
Shipping Data	lbs. - 1 package		129	141	160

NOTE - Filters and provisions for mounting are not furnished and must be field provided.

¹ Annual Fuel Utilization Efficiency based on DOE test procedures and according to FTC labeling regulations. Isolated combustion system rating for non-weatherized furnaces.

NOTE - Due to Lennox' ongoing commitment to quality, Specifications, Ratings and Dimensions subject to change without notice and without incurring liability. Improper installation, adjustment, alteration, service or maintenance can cause property damage or personal injury. Installation and service must be performed by a qualified installer and servicing agency.



OPTIONAL ACCESSORIES - ORDER SEPARATELY

		"A" Width Models	"B" Width Models	"C" Width Models	
CABINET ACCESSORIES					
Horizontal Suspension Kit - Horizontal only		51W10	51W10	51W10	
Return Air Base - Upflow only		65W75	50W98	50W99	
High Performance Economizer (Commercial Only)		10U53	10U53	10U53	
CONTROLS					
iComfort® M30 Smart Wi-Fi Thermostat		15Z69	15Z69	15Z69	
Outdoor Temperature Sensor		X2658	X2658	X2658	
FILTERS					
¹ Air Filter and Rack Kit	Horizontal (end)	87L95	87L96	87L97	
	Size of filter - in.	14 x 25 x 1	18 x 25 x 1	20 x 25 x 1	
	Side Return	Single	44J22	44J22	44J22
		Ten Pack	66K63	66K63	66K63
	Size of filter - in.	16 x 25 x 1	16 x 25 x 1	16 x 25 x 1	
NIGHT SERVICE KITS					
Night Service Kit		19H89	19H89	19H89	
VENTING					
Vent Adaptor – 6 in. conn. size upflow applications only		18M79	18M79	18M79	

¹ Cleanable polyurethane, frame-type filter.

GAS HEAT ACCESSORIES

Input	High Altitude Pressure Switch Kit			Natural Gas to LPG/Propane Kit		LPG/Propane to Natural Gas Kit	Natural Gas High Altitude Orifice Kit
	0 - 4500 ft.	4501 - 7500 ft.	7501 - 10,000 ft.	0 - 7500 ft.	7501 - 10,000 ft.	0 - 7500 ft.	7501 - 10,000 ft.
030	No Change	80W52	80W51	19D59	19H30	N/A	14C90
045	No Change	80W52	80W51	19D58	19H29	77W09	73W37
070	No Change	80W52	80W51	19D58	19H29	77W09	73W37
090	No Change	80W52	80W51	19D58	19H29	77W09	73W37
110	No Change	80W57	80W52	19D58	19H29	77W09	73W37

NOTE - Due to Lennox' ongoing commitment to quality, Specifications, Ratings and Dimensions subject to change without notice and without incurring liability. Improper installation, adjustment, alteration, service or maintenance can cause property damage or personal injury. Installation and service must be performed by a qualified installer and servicing agency.



GAS FURNACES ML180UHE MERIT® SERIES

RESIDENTIAL PRODUCT CATALOG

FEATURES

Heating System

- Lennox Duralok™ Aluminized Steel Heat Exchanger Assembly
- Aluminized Steel Inshot Burners
- Gas Control Valve with 100% Safety Shutoff
- Flame Rollout Switches
- Hot Surface, Nitride Ignitor
- Combustion Air Inducer
- Limit Control

Controls

- Integrated Furnace Control
- 24 Volt Transformer
- Field Wiring Make-up Box

Power Saver™ Constant Torque Blower Motor

- High efficiency, multi-speed ECM (Electronically Commutated Motor)

Cabinet

- Upflow/Horizontal applications
- Pre-painted finish
- Foil-faced insulation on sides and back of heating compartment

Low Leakage Cabinet

- Less than 2%

Coil Match-up

- All furnaces match Lennox cased upflow indoor coils and horizontal indoor coils with same letter designation (A, B, C, D) as in the furnace model number



Upflow/Horizontal - Constant Torque Blower Motor
AFUE - 80%
Input - 44,000 to 132,000 Btuh
Page 23

January 2022

Supersedes June 2021

NOTE - Not Available In Canada!

ACCESSORIES

- See page 27

Cabinet

- Horizontal Suspension Kit
- Return Air Base

Controls

- Blower Motor Relay Kit
- iComfort® M30 Smart Wi-Fi Thermostat
- Twinning Panel/Twinning Kit

Filter Kits

- Air Filter and Rack Kits

Gas Heating

- Gas Conversion Kits
- High Altitude Orifice Kit (natural gas only)
- High Altitude Pressure Switch Kit

Service Kits

- Night Service Kit

Venting

- Vent Adaptor (Upflow Applications Only)

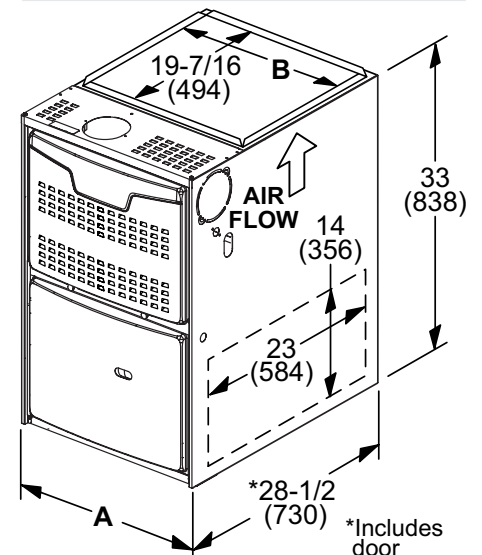
LIMITED WARRANTY

- Heat Exchanger - Twenty years
- All other covered components - Five years

NOTE - Refer to Lennox Equipment Limited Warranty certificate included with equipment for details.

Furnace Width	"A"	"B"	"C"	"D"
A Dimension	14-1/2 (368)	17-1/2 (446)	21 (533)	24-1/2 (622)
B Dimension	13-3/8 (340)	16-3/8 (416)	19-7/8 (454)	23-3/8 (546)
Bottom Width return	13 (330)	16 (406)	19-1/2 (495)	23 (584)
Depth	23-1/2 (597)	23-1/2 (597)	23-1/2 (597)	23-1/2 (597)

DIMENSIONS



NOTE - Due to Lennox' ongoing commitment to quality, Specifications, Ratings and Dimensions subject to change without notice and without incurring liability. Improper installation, adjustment, alteration, service or maintenance can cause property damage or personal injury. Installation and service must be performed by a qualified installer and servicing agency.

SPECIFICATIONS

Gas Heating Performance	Model No.	ML180UH045E36A	ML180UH070E36A	ML180UH070E36B	ML180UH090E48B
	Model No. - Low Nox	ML180UH045XE36A	ML180UH070XE36A	ML180UH070XE36B	ML180UH090XE48B
	¹ AFUE	80%	80%	80%	80%
	Input - Btuh	44,000	66,000	66,000	88,000
	Output - Btuh	36,000	53,000	53,000	72,000
	Temperature rise range - °F	15 - 45	40 - 70	40 - 70	35 - 65
	Gas Manifold Pressure (in. w.g.) Nat. Gas / LPG/Propane	3.5 / 10.0	3.5 / 10.0	3.5 / 10.0	3.5 / 10.0
High Static - in. w.g.		0.50	0.50	0.50	0.50
Connections in.	Flue connection - in. round	4	4	4	4
	Gas pipe size IPS	1/2	1/2	1/2	1/2
Indoor Blower	Wheel nom. dia. x width - in.	10 x 8	10 x 10	10 x 10	10 x 10
	Motor Type	DC Brushless	DC Brushless	DC Brushless	DC Brushless
	Motor output - hp	1/2	1/2	1/2	3/4
	Tons of add-on cooling	1.5 - 3	1.5 - 3	1.5 - 3	2.5 - 4
	Air Volume Range - cfm	350 - 1380	625 - 1435	395 - 1415	750 - 1785
Electrical Data	Voltage	120 volts - 60 hertz - 1 phase			
	Blower motor full load amps	6.8	6.8	6.8	8.4
	Maximum overcurrent protection	15	15	15	15
Shipping Data	lbs. - 1 package	111	111	127	142

SPECIFICATIONS

Gas Heating Performance	Model No.	ML180UH090E60C	ML180UH110E60C	ML180UH135E60D
	Model No. - Low Nox	---	ML180UH110XE60C	---
	¹ AFUE	80%	80%	80%
	Input - Btuh	88,000	110,000	132,000
	Output - Btuh	72,000	90,000	107,000
	Temperature rise range - °F	30 - 60	35 - 65	30 - 60
	Gas Manifold Pressure (in. w.g.) Nat. Gas / LPG/Propane	3.5 / 10.0	3.5 / 10.0	3.5 / 10.0
High Static - in. w.g.		0.50	0.50	0.50
Connections in.	Flue connection - in. round	4	4	4
	Gas pipe size IPS	1/2	1/2	1/2
Indoor Blower	Wheel nom. dia. x width - in.	11-1/2 x 10	11-1/2 x 10	11 x 11
	Motor Type	DC Brushless	DC Brushless	DC Brushless
	Motor output - hp	1	1	1
	Tons of add-on cooling	3 - 5	3 - 5	3.5 - 5
	Air Volume Range - cfm	990 - 2290	920 - 2315	1140 - 2495
Electrical Data	Voltage	120 volts - 60 hertz - 1 phase		
	Blower motor full load amps	10.9	10.9	10.9
	Maximum overcurrent protection	15	15	15
Shipping Data	lbs. - 1 package	152	160	178

NOTE - Filters and provisions for mounting are not furnished and must be field provided.

¹ Annual Fuel Utilization Efficiency based on DOE test procedures and according to FTC labeling regulations. Isolated combustion system rating for non-weatherized furnaces.

NOTE - Due to Lennox' ongoing commitment to quality, Specifications, Ratings and Dimensions subject to change without notice and without incurring liability. Improper installation, adjustment, alteration, service or maintenance can cause property damage or personal injury. Installation and service must be performed by a qualified installer and servicing agency.



GAS FURNACES ML180DFE MERIT® SERIES

RESIDENTIAL PRODUCT CATALOG

FEATURES

Heating System

- Lennox Duralok™ Aluminized Steel Heat Exchanger Assembly
- Aluminized Steel Inshot Burners
- Gas Control Valve with 100% Safety Shutoff
- Flame Rollout Switch
- Hot Surface, Nitride Ignitor
- Combustion Air Inducer
- Limit Controls

Controls

- Integrated Furnace Control
- 24 Volt Transformer
- Field Wiring Make-up Box

Power Saver™ Constant Torque Blower Motor

- High efficiency, multi-speed ECM (Electronically Commutated Motor)

Cabinet

- Downflow applications
- Pre-painted finish
- Foil-faced insulation on sides and back of heating compartment

Low Leakage Cabinet

- Less than 2%

Coil Match-up

- All Lennox downflow indoor coils will physically match the furnace supply air opening with the same letter designation (A, B, C, D) as in the furnace model number



Downflow - Constant Torque Blower Motor
AFUE - 80%
Input - 44,000 to 110,000 Btuh
Page 25

January 2022

Supersedes June 2021

NOTE - Not Available In Canada!

ACCESSORIES

- See page 27

Cabinet

- Downflow Combustible Flooring Base

Controls

- Blower Motor Relay Kit
- iComfort® M30 Smart Wi-Fi Thermostat
- Twinning Panel/Twinning Kit

Filters

- Downflow Filter Kits

Gas Heating

- Gas Conversion Kits
- High Altitude Pressure Switch Kits

Service Kits

- Night Service Kit

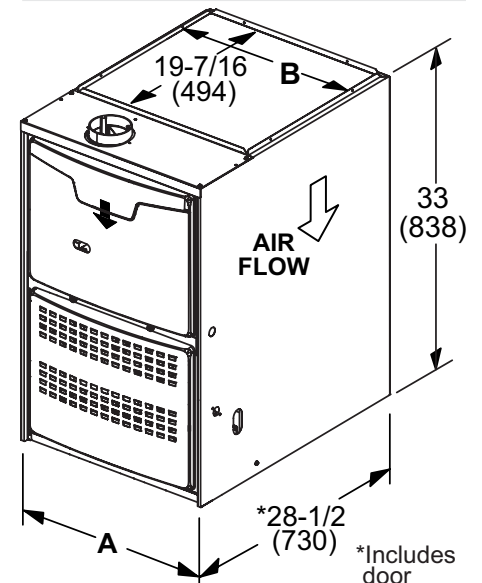
LIMITED WARRANTY

- Heat Exchanger - Twenty years
- All other covered components - Five years

NOTE - Refer to Lennox Equipment Limited Warranty certificate included with equipment for details.

Furnace Width	"A"	"B"	"C"
A Dimension	14-1/2 (368)	17-1/2 (446)	21 (533)
B Dimension	13-3/8 (340)	16-3/8 (416)	19-7/8 (454)
Bottom Width return	13 (330)	16 (406)	19-1/2 (495)
Depth	23-1/2 (597)	23-1/2 (597)	23-1/2 (597)

DIMENSIONS



NOTE - Due to Lennox' ongoing commitment to quality, Specifications, Ratings and Dimensions subject to change without notice and without incurring liability. Improper installation, adjustment, alteration, service or maintenance can cause property damage or personal injury. Installation and service must be performed by a qualified installer and servicing agency.

SPECIFICATIONS

Gas Heating Performance		Model No.	ML180DF045E36A	ML180DF070E36A	ML180DF070E36B
		¹ AFUE	80%	80%	80%
		Input - Btuh	44,000	66,000	66,000
		Output - Btuh	36,000	54,000	54,000
		Temperature rise range - °F	15 - 45	30 - 60	30 - 60
		Gas Manifold Pressure (in. w.g.) Nat. Gas / LPG/Propane	3.5 / 10.0	3.5 / 10.0	3.5 / 10.0
High Static - in. w.g.			0.50	0.50	0.50
Connections in.	Flue connection - in. round		4	4	4
	Gas pipe size IPS		1/2	1/2	1/2
Indoor Blower	Wheel nom. dia. x width - in.		10 x 8	10 x 10	10 x 10
	Motor Type		DC Brushless	DC Brushless	DC Brushless
	Motor output - hp		1/2	1/2	1/2
	Tons of add-on cooling		1.5 - 3	1.5 - 3	1.5 - 3
	Air Volume Range - cfm		355 - 1430	675 - 1460	430 - 1475
Electrical Data	Voltage	120 volts - 60 hertz - 1 phase			
	Blower motor full load amps		6.8	6.8	6.8
	Maximum overcurrent protection		15	15	15
Shipping Data	lbs. - 1 package		113	119	128

NOTE - Filters and provisions for mounting are not furnished and must be field provided.

¹ Annual Fuel Utilization Efficiency based on DOE test procedures and according to FTC labeling regulations. Isolated combustion system rating for non-weatherized furnaces.**SPECIFICATIONS**

Gas Heating Performance		Model No.	ML180DF090E48B	ML180DF110E60C
		¹ AFUE	80%	80%
		Input - Btuh	88,000	110,000
		Output - Btuh	72,000	90,000
		Temperature rise range - °F	30 - 60	30 - 60
		Gas Manifold Pressure (in. w.g.) Nat. Gas / LPG/Propane	3.5 / 10.0	3.5 / 10.0
High Static - in. w.g.			0.50	0.50
Connections in.	Flue connection - in. round		4	4
	Gas pipe size IPS		1/2	1/2
Indoor Blower	Wheel nom. dia. x width - in.		10 x 10	11-1/2 x 10
	Motor Type		DC Brushless	DC Brushless
	Motor output - hp		3/4	1
	Tons of add-on cooling		2.5 - 4	3 - 5
	Air Volume Range - cfm		680 - 1750	990 - 2410
Electrical Data	Voltage	120 volts - 60 hertz - 1 phase		
	Blower motor full load amps		8.4	10.9
	Maximum overcurrent protection		15	15
Shipping Data	lbs. - 1 package		140	160

NOTE - Filters and provisions for mounting are not furnished and must be field provided.

¹ Annual Fuel Utilization Efficiency based on DOE test procedures and according to FTC labeling regulations. Isolated combustion system rating for non-weatherized furnaces.

NOTE - Due to Lennox' ongoing commitment to quality, Specifications, Ratings and Dimensions subject to change without notice and without incurring liability. Improper installation, adjustment, alteration, service or maintenance can cause property damage or personal injury. Installation and service must be performed by a qualified installer and servicing agency.



ML180UHE, ML180DFE - OPTIONAL ACCESSORIES

**RESIDENTIAL
PRODUCT CATALOG**

Page 27
January 2022
Supersedes June 2021

OPTIONAL ACCESSORIES - ORDER SEPARATELY

	"A" Width	"B" Width	"C" Width	"D" Width		
CABINET ACCESSORIES						
Downflow Combustible Flooring Base - Downflow only	11M59	11M60	11M61	---		
Horizontal Suspension Kit - Horizontal only	51W10	51W10	51W10	51W10		
Return Air Base - Upflow only	65W75	50W98	50W99	51W00		
CONTROLS						
Blower Motor Relay Kit (for two-stage outdoor units)	85W66	85W66	85W66	85W66		
Twinning Panel	Y3653	Y3653	Y3653	Y3653		
Twinning Kit	16W72	16W72	16W72	16W72		
DOWNFLOW FILTER KITS						
Downflow Filter Cabinet	51W06	51W07	51W08	---		
¹ No. and size of filter - in.	(1) 20 x 20 x 1	(2) 16 x 20 x 1	(2) 16 x 20 x 1	---		
SERVICE KIT						
Night Service Kit	84W47	84W47	84W47	84W47		
UPFLOW/HORIZONTAL FILTER KITS						
¹ Air Filter and Rack Kit	Horizontal (end)	87L95	87L96	87L97	87L98	
	Size of filter - in.	14 x 25 x 1	18 x 25 x 1	20 x 25 x 1	25 x 25 x 1	
	Side Return	Single	44J22	44J22	44J22	44J22
		Ten Pack	66K63	66K63	66K63	66K63
	Size of filter - in.	16 x 25 x 1	16 x 25 x 1	16 x 25 x 1	16 x 25 x 1	
VENTING						
Vent Adaptor - 6 in. connection size upflow applications only	18M79	18M79	18M79	18M79		

¹ Cleanable frame type filter.

GAS HEAT ACCESSORIES

Input	High Altitude Pressure Switch Kit			Natural Gas to LPG/Propane Kit		LPG/Propane to Natural Gas Kit	Natural Gas High Altitude Orifice Kit
	0 - 4500 ft.	4501 - 7500 ft.	7501 - 10,000 ft.	0 - 7500 ft.	7501 - 10,000 ft.	0 - 7500 ft.	7501 - 10,000 ft.
045	No Change	80W52 (upflow) (no change for downflow)	80W51	11K49	11K44	73W81	73W37
070	No Change	80W52	80W51	11K49	11K44	73W81	73W37
090	No Change	80W52 (upflow) (no change for downflow)	80W51	11K49	11K44	73W81	73W37
110	No Change	80W52	80W52	11K49	11K44	73W81	73W37
135	No Change	80W52	80W51	11K49	11K44	73W81	73W37

NOTE - Due to Lennox' ongoing commitment to quality, Specifications, Ratings and Dimensions subject to change without notice and without incurring liability. Improper installation, adjustment, alteration, service or maintenance can cause property damage or personal injury. Installation and service must be performed by a qualified installer and servicing agency.



AIR CONDITIONERS ML14XC1 MERIT® SERIES

RESIDENTIAL PRODUCT CATALOG

R-410A - Scroll Compressor
SEER - Up to 18.00
1.5 to 5 Tons
Page 1
January 2022
Supersedes June 2021

FEATURES

Refrigerant System

- Scroll Compressor
- Non-chlorine, ozone friendly, R-410A refrigerant
- Quantum™ Coil - Aluminum tube construction with enhanced ripple-edged aluminum fins
- Units applicable to expansion valve systems or RFC systems when matched with specific indoor coils
- Fully serviceable brass service valves
- High pressure switch
- Liquid line drier shipped with unit
- Totally enclosed, direct drive outdoor fan motor with sleeve bearings

Cabinet

- Heavy-gauge galvanized steel with powder paint finish
- Steel louvered panels provide complete coil protection
- Louvered steel top fan guard
- PermaGuard™ zinc-coated base
- Corner patch plate allows access to compressor



LIMITED WARRANTY

- Compressor - Five years
- All covered components - Five years

NOTE - Refer to Lennox Equipment Limited Warranty certificate included with equipment for details.

Model No.	A	B
ML14XC1-018	29-1/4 (743)	24-1/4 (616)
ML14XC1-024 ML14XC1-036	29-1/4 (743)	28-1/4 (718)
ML14XC1-030 ML14XC1-041 ML14XC1-042 ML14XC1-048	37-1/4 (946)	28-1/4 (718)
ML14XC1-047	33-1/4 (845)	32-1/4 (817)
ML14XC1-059 ML14XC1-060	43-1/4 (1099)	32-1/4 (817)

AHRI RATINGS

- AHRI Certified system match-ups and expanded ratings, visit www.LennoxPros.com

ACCESSORIES

- See page 9

Cabinet

- Unit Stand-Off Kit

Compressor

- Compressor Crankcase Heater
- Compressor Hard Start Kit
- Compressor Low Ambient Cut-Off
- Compressor Sound Cover
- Compressor Time-Off Control

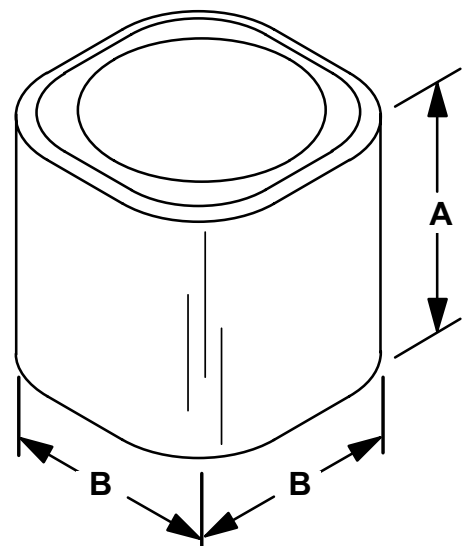
Controls

- Freezestat
- Indoor Blower Off Delay Relay
- Low Ambient Kit
- Loss of Charge Switch Kit
- iComfort® M30 Smart Wi-Fi Thermostat

Refrigerant System

- Expansion Valve Kits
- Refrigerant Line Kits

DIMENSIONS



NOTE - Due to Lennox' ongoing commitment to quality, Specifications, Ratings and Dimensions subject to change without notice and without incurring liability. Improper installation, adjustment, alteration, service or maintenance can cause property damage or personal injury. Installation and service must be performed by a qualified installer and servicing agency.

SPECIFICATIONS

General	Model No.	All Regions	ML14XC1-018	ML14XC1-024	ML14XC1-030	ML14XC1-036	ML14XC1-041
Data		Southeast and North Regions	ML14XC1S018	ML14XC1S024	ML14XC1S030	ML14XC1S036	---
		Nominal Tonnage	1.5	2	2.5	3	3.5
¹ Sound Rating Number (dBA)			73	76	76	76	74
Connections		Liquid line o.d. - in.	3/8	3/8	3/8	3/8	3/8
		Suction line o.d. - in.	3/4	3/4	3/4	7/8	7/8
² Refrigerant (R-410A) furnished			4 lbs. 9 oz.	4 lbs. 9 oz.	5 lbs. 8 oz.	7 lbs. 1 oz.	9 lbs. 0 oz.
Indoor Unit Expansion Valve (TXV) (If needed)			12J18	12J18	12J18	12J19	12J20
Outdoor		Diameter - in. (No. of blades)	18 (3)	22 (3)	22 (3)	22 (3)	22 (3)
Fan		Motor hp	1/10	1/6	1/6	1/6	1/6
Shipping Data - lbs. 1 package			134	152	169	175	192

ELECTRICAL DATA

	Line voltage data - 60 Hz - 1ph	208/230V	208/230V	208/230V	208/230V	208/230V
	² Maximum overcurrent protection (MOCP) amps	20	25	25	30	30
	³ Minimum circuit ampacity (MCA)	11.9	14.6	17	18.0	19.3
Compressor	Rated load amps	9.0	10.9	12.8	13.6	14.7
	Locked rotor amps	48	59.3	67.8	79	75
	Power factor	0.97	0.97	0.97	0.96	0.96
Condenser	Full load amps	0.7	1	1	1	1
Fan Motor	Locked rotor amps	1.3	1.9	1.9	1.9	1.9

SPECIFICATIONS

General	Model No.	All Regions	ML14XC1-042	ML14XC1-047	ML14XC1-048	ML14XC1-059	ML14XC1-060
Data		Southeast and North Regions	ML14XC1S042	---	---	---	---
		Nominal Tonnage	3.5	4	4	5	5
¹ Sound Rating Number (dBA)			76	80	78	77	80
Connections		Liquid line o.d. - in.	3/8	3/8	3/8	3/8	3/8
		Suction line o.d. - in.	7/8	7/8	7/8	1-1/8	1-1/8
² Refrigerant (R-410A) furnished			8 lbs. 12 oz.	11 lbs. 0 oz.	9 lbs. 12 oz.	11 lbs. 13 oz.	12 lbs. 0 oz.
Indoor Unit Expansion Valve (TXV) (If needed)			12J20	12J20	12J20	12J20	12J20
Outdoor		Diameter - in. (No. of blades)	22 (3)	26 (4)	22 (4)	26 (4)	26 (4)
Fan		Motor hp	1/6	1/3	1/4	1/3	1/3
Shipping Data - lbs. 1 package			211	231	218	253	267

ELECTRICAL DATA

	Line voltage data - 60 Hz - 1ph	208/230V	208/230V	208/230V	208/230V	208/230V
	³ Maximum overcurrent protection (MOCP) amps	40	35	40	45	50
	⁴ Minimum circuit ampacity (MCA)	23.4	21.9	24.2	28.8	29.6
Compressor	Rated load amps	17.9	16.1	18.0	20.8	22.2
	Locked rotor amps	112	105.5	117	127.1	127.9
	Power factor	0.96	0.98	0.96	0.98	0.98
Condenser	Full load amps	1	1.8	1.7	2.8	1.8
Fan Motor	Locked rotor amps	1.9	2.9	3.2	---	2.9

NOTE - Extremes of operating range are plus 10% and minus 5% of line voltage.

¹ Sound Rating Number rated in accordance with test conditions included in AHRI Standard 270.² Refrigerant charge sufficient for 15 ft. length of refrigerant lines. For longer line set requirements see the Installation Instructions for information about line set length and additional refrigerant charge required.³ HACR type circuit breaker or fuse.⁴ Refer to National or Canadian Electrical Code manual to determine wire, fuse and disconnect size requirements.

NOTE - Due to Lennox' ongoing commitment to quality, Specifications, Ratings and Dimensions subject to change without notice and without incurring liability. Improper installation, adjustment, alteration, service or maintenance can cause property damage or personal injury. Installation and service must be performed by a qualified installer and servicing agency.



AIR CONDITIONERS 16ACX MERIT® SERIES

RESIDENTIAL PRODUCT CATALOG

R-410A - Two-Stage Scroll Compressor
SEER - Up to 18.00
2 to 5 Tons
Page 3
January 2022
Supersedes June 2021

FEATURES

Refrigerant System

- Two-Stage scroll compressor
- Crankcase heater (-048-060)
- Non-chlorine, ozone friendly, R-410A refrigerant
- Copper tube construction with enhanced ripple-edged aluminum fins
- Fully serviceable brass service valves
- Factory installed, hi-capacity liquid line drier
- High Pressure Switch
- Low pressure Switch

Cabinet

- Heavy-gauge galvanized steel with powder paint finish
- Steel louvered panels provide complete coil protection
- Louvered steel top fan guard
- PermaGuard™ zinc-coated base
- Corner patch plate allows access to compressor



LIMITED WARRANTY

- Compressor - Five years
- All covered components - Five years

NOTE - Refer to Lennox Equipment Limited Warranty certificate included with equipment for details.

AHRI RATINGS

- AHRI Certified system match-ups and expanded ratings, visit www.LennoxPros.com

Model No.	A	B
16ACX-024	29-1/4 (743)	24-1/4 (616)
16ACX-036	29-1/4 (743)	28-1/4 (718)
16ACX-048	37-1/4 (946)	28-1/4 (718)
16ACX-060	43-1/4 (1099)	32-1/4 (817)

ACCESSORIES

- See page 9

Cabinet

- Unit Stand-Off Kit

Compressor

- Compressor Crankcase Heater (024-036)
- Compressor Hard Start Kit
- Compressor Low Ambient Cut-Off
- Compressor Time-Off Control
- Sound Cover

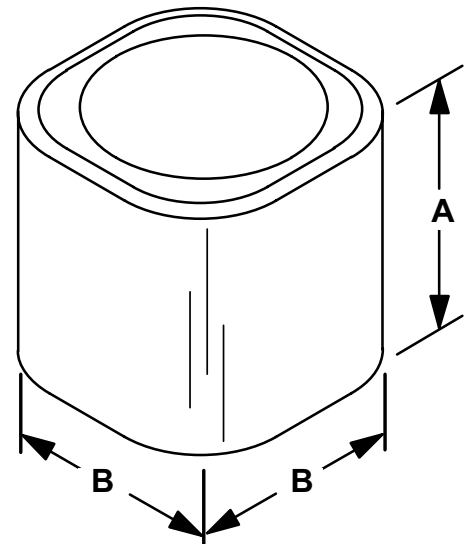
Controls

- Freezestat
- Indoor Blower Off Delay Relay
- Indoor Blower Speed Relay Kit
- Low Ambient Kit
- iComfort® M30 Smart Wi-Fi Thermostat

Refrigerant System

- Expansion Valve Kits
- Refrigerant Line Kits

DIMENSIONS



NOTE - Due to Lennox' ongoing commitment to quality, Specifications, Ratings and Dimensions subject to change without notice and without incurring liability. Improper installation, adjustment, alteration, service or maintenance can cause property damage or personal injury. Installation and service must be performed by a qualified installer and servicing agency.

SPECIFICATIONS

General Data	Model No.	All Regions Nominal Tonnage	16ACX-024	16ACX-036	16ACX-048	16ACX-060
¹ Sound Rating Number (dBA)			77	76	78	75
Connections (sweat)	Liquid line (o.d.) - in.		3/8	3/8	3/8	3/8
	Suction line (o.d.) - in.		3/4	7/8	7/8	1-1/8
Refrigerant	² R-410A charge furnished		7 lbs. 2 oz.	9 lbs. 0 oz.	10 lbs. 6 oz.	13 lbs. 2 oz.
Indoor Unit Expansion Valve (TXV) (If needed)			12J18	12J19	12J20	12J20
Outdoor Fan	Diameter - in. and No. of blades		22 - 3	22 - 3	22 - 3	26 - 3
	Motor hp		1/6	1/4	1/4	1/4
	Cfm		3260	3450	3800	4375
	Rpm		825	825	825	825
	Watts		220	290	305	270
Shipping Data - lbs. 1 pkg.			190	190	235	285

ELECTRICAL DATA

Line voltage data - 60 Hz - 1ph		⁵ 230V-1ph	⁵ 230V-1ph	⁵ 230V-1ph	⁵ 230V-1ph
³ Maximum overcurrent protection (MOCP) amps		20	30	40	50
⁴ Minimum circuit ampacity (MCA)		15.6	20.8	29.2	35.7
Compressor	Rated load amps	10.2	14.2	17	23.5
	Locked rotor amps	55	78	109	118
	Power factor	0.98	0.95	0.97	0.95
Outdoor Fan Motor	Full load amps	1.0	1.7	1.7	1.4
	Locked Rotor amps	1.9	3.2	3.2	3.2

NOTE - Extremes of operating range are plus 10% and minus 5% of line voltage.

¹ Sound Rating Number in accordance with test conditions included in AHRI Standard 270.

² Refrigerant charge sufficient for 15 ft. length of refrigerant lines. For longer line set requirements see the Installation Instructions for information about line set length and additional refrigerant charge required.

³ HACR type breaker or fuse.

⁴ Refer to National or Canadian Electrical Code manual to determine wire, fuse and disconnect size requirements.

⁵ Hard Start Kit is required in applications where the supply voltage is less than 230V.



NOTE - Due to Lennox' ongoing commitment to quality, Specifications, Ratings and Dimensions subject to change without notice and without incurring liability. Improper installation, adjustment, alteration, service or maintenance can cause property damage or personal injury. Installation and service must be performed by a qualified installer and servicing agency.



AIR CONDITIONERS

13ACXN

MERIT® SERIES

RESIDENTIAL PRODUCT CATALOG

R-410A - Scroll Compressor
SEER - Up to 16.00
1.5 to 5 Tons
Page 5
January 2022
Supersedes June 2021

FEATURES

Refrigerant System

- Scroll Compressor
- Non-chlorine, ozone friendly, R-410A refrigerant
- Units applicable to expansion valve systems or RFC systems when matched with specific indoor coils
- Copper tube construction with enhanced ripple-edged aluminum fins
- Fully serviceable brass service valves
- Liquid line drier shipped with unit
- High Pressure Switch
- Totally enclosed, direct drive outdoor fan motor with sleeve bearings

Cabinet

- Heavy-gauge galvanized steel with powder paint finish
- Steel louvered panels provide complete coil protection
- Louvered steel top fan guard
- PermaGuard™ zinc-coated base
- Corner patch plate allows access to compressor



LIMITED WARRANTY

- Compressor - Five years
- All covered components - Five years

NOTE - Refer to Lennox Equipment Limited Warranty certificate included with equipment for details.

Model No.	A	B
13ACXN018	25-1/4	24-1/4
13ACXN024	(616)	(616)
13ACXN030	29-1/4	24-1/4
13ACXN036	(743)	(616)
13ACXN042	29-1/4	28-1/4
	(743)	(718)
13ACXN048	33-1/4	28-1/4
	(845)	(718)
13ACXN060	29-1/4	28-1/4
	(743)	(718)

AHRI RATINGS

- AHRI Certified system match-ups and expanded ratings, visit www.LennoxPros.com

ACCESSORIES

- See page 9

Cabinet

- Unit Stand-Off Kit

Compressor

- Compressor Crankcase Heater
- Compressor Hard Start Kit
- Compressor Low Ambient Cut-Off
- Compressor Sound Cover
- Compressor Time-Off Control

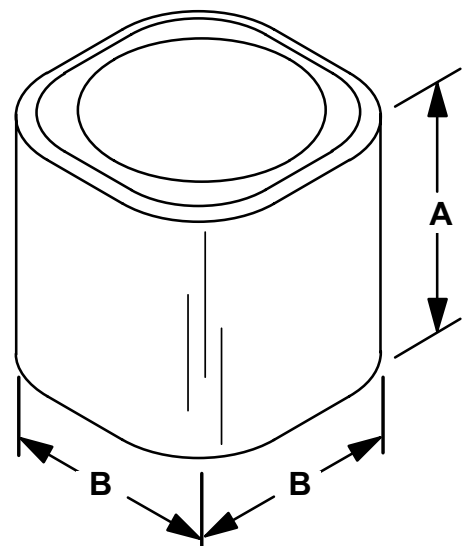
Controls

- Freezestat
- Indoor Blower Off Delay Relay
- Low Ambient Kit
- Loss of Charge Switch Kit
- iComfort® M30 Smart Wi-Fi Thermostat

Refrigerant System

- Expansion Valve Kits
- Refrigerant Line Kits

DIMENSIONS



NOTE - Due to Lennox' ongoing commitment to quality, Specifications, Ratings and Dimensions subject to change without notice and without incurring liability. Improper installation, adjustment, alteration, service or maintenance can cause property damage or personal injury. Installation and service must be performed by a qualified installer and servicing agency.

SPECIFICATIONS

General Data	Model No.	Northern Region Nominal Tonnage	13ACXN018	13ACXN024	13ACXN030	13ACXN036	13ACXN042	13ACXN048	13ACXN060
¹ Sound Rating Number (dBA)			76	76	76	76	79	79	79
Connections (sweat)	Liquid line o.d. - in.		3/8	3/8	3/8	3/8	3/8	3/8	3/8
	Suction line o.d. - in.		5/8	5/8	3/4	3/4	3/4	7/8	7/8
² Refrigerant (R-410A) furnished			3 lbs. 15 oz.	3 lbs. 15 oz.	5 lbs. 2 oz.	5 lbs. 4 oz.	6 lbs. 8 oz.	7 lbs. 12 oz.	9 lbs. 0 oz.
Indoor Unit Expansion Valve (TXV) (If needed)			12J18	12J18	12J18	12J19	12J20	12J20	12J20
RFCIV Metering Orifice Size Furnished			0.051	0.057	0.059	0.072	0.076	0.082	0.090
Outdoor Fan	Diameter - in.		18	18	18	18	22	22	22
	Number of blades		3	3	4	4	4	4	4
	Motor hp		1/10	1/10	1/5	1/5	1/4	1/4	1/4
Shipping Data - lbs. 1 package			138	138	144	151	188	195	218

ELECTRICAL DATA

Line voltage data - 60 hz - 1ph			208/230V	208/230V	208/230V	208/230V	208/230V	208/230V	208/230V
³ Maximum overcurrent protection (MOCP) amps			20	25	25	35	40	50	60
⁴ Minimum circuit ampacity (MCA)			12.4	14.7	17.1	20.4	25.7	31.9	34.6
Compressor	Rated load amps		9.4	11.2	12.8	15.4	19.2	24.2	26.3
Condenser Fan Motor	Full load amps		0.7	0.7	1.1	1.1	1.7	1.7	1.7

NOTE – Extremes of operating range are plus 10% and minus 5% of line voltage.

¹ Sound Rating Number rated in accordance with test conditions included in AHRI Standard 270.

² Refrigerant charge sufficient for 15 ft. length of refrigerant lines.

³ HACR type circuit breaker or fuse.

⁴ Refer to National or Canadian Electrical Code manual to determine wire, fuse and disconnect size requirements



NOTE – Due to Lennox' ongoing commitment to quality, Specifications, Ratings and Dimensions subject to change without notice and without incurring liability. Improper installation, adjustment, alteration, service or maintenance can cause property damage or personal injury. Installation and service must be performed by a qualified installer and servicing agency.



**RESIDENTIAL
PRODUCT CATALOG**

OPTIONAL ACCESSORIES - ORDER SEPARATELY

	Model No.	XC20 XC25				XC21				SL18CX1					
		-024	-036	-048	-060	-024	-036	-048	-060	-024	-030	-036	-042	-048	-060
iComfort® S30 Ultra-Smart Wi-Fi Thermostat	12U67	•	•	•	•	•	•	•	•	•	•	•	•	•	•
¹ Remote Outdoor Air Sensor	X2658					•	•	•	•						
² Discharge Air Temperature Sensor	88K38	•	•	•	•	•	•	•	•	•	•	•	•	•	•
Compressor Crankcase Heater	93M04														
	Factory					F	F	F	F						
Compressor Hard Start Kit	63W22					•									
	12J90							•	•						
Copeland	10J42					•	•								
LG	88M91									•	•	•	•	•	•
Compressor Low Ambient Cut-Off	45F08														
Compressor Time-Off Control	47J27					•	•	•	•	•	•	•	•	•	•
	47J35														
³ Freezestat	3/8 in. tubing	93G35	•	•	•	•	•	•	•	•	•	•	•	•	•
	5/8 in. tubing	50A93	•	•	•	•	•	•	•	•	•	•	•	•	•
Indoor Blower Off Delay Relay		58M81					•	•	•	•	•	•	•	•	•
Indoor Blower Speed Relay		31960					•	•	•	•					
Loss of Charge Kit		84M23													
		Factory					F	F	F	F					
³ Low Ambient Kit (TXV systems only)		68M04					•	•	•	•	•	•	•	•	•
		34M72													
Refrigerant Line Sets	L15-41-20	L15-41-40									•	•			
	L15-41-30	L15-41-50													
	L15-65-30	L15-65-40	•	•	•		•	•	•				•	•	•
		L15-65-50													
		Field Fabricate				•				•					•

¹ Remote Outdoor Temperature Sensor is used with conventional (non-iComfort® Communicating) outdoor units (sensor is furnished with iComfort® Communicating outdoor units). Allows the thermostat to display outdoor temperature. Required in dual-fuel and Humiditrol® applications.

² Optional for service diagnostics.

³ Crankcase Heater (if not furnished) and Freezestat are recommended with Low Ambient Kit.

F = Factory Installed



OPTIONAL ACCESSORIES - ORDER SEPARATELY

Model No.		EL16XC1						XC16			XC14						XC13												
		-018	-024	-030	-036	-041	-042	-047	-048	-060	-024	-036	-048	-060	-018	-024	-030	-036	-041	-042	-047	-048	-060	N018	N024	N030	N036	N042	N048
Compressor Crankcase Heater	93M04	•	•	•	•	•	•				•	•																	
	93M05																										•	•	•
	Factory							F	F	F		F	F								F	F	F						
Compressor Hard Start Kit	Copeland 10J42	•	•	•			•	•			•	•																	
	LG 88M91	•	•	•	•	•	•	•	•	•																			
	63W22										•																		
	63W24													•															
Compressor Sound Cover	18J42										•	•	•	•															
Compressor Low Ambient Cut-Off	45F08	•	•	•	•	•	•	•	•	•	•	•	•	•	•	•	•	•	•	•	•	•	•	•	•	•	•	•	
Compressor Time-Off Control	47J27										•	•	•	•	•	•	•	•	•	•	•	•	•	•	•	•	•	•	
	47J35	•	•	•	•	•	•	•	•	•																			
³ Freezestat	3/8 in. tubing 93G35	•	•	•	•	•	•	•	•	•	•	•	•	•	•	•	•	•	•	•	•	•	•	•	•	•	•	•	
	5/8 in. tubing 50A93	•	•	•	•	•	•	•	•	•	•	•	•	•	•	•	•	•	•	•	•	•	•	•	•	•	•	•	
Indoor Blower Off Delay Relay	58M81	•	•	•	•	•	•	•	•	•	•	•	•	•	•	•	•	•	•	•	•	•	•	•	•	•	•	•	
Indoor Blower Speed Relay	40K58										•	•	•	•															
Loss of Charge Kit	84M23	•	•	•	•	•	•	•	•	•																			
¹ Low Ambient Kit (TXV systems only)	34M72	•	•	•	•	•	•	•	•	•	•	•	•	•	•	•	•	•	•	•	•	•	•	•	•	•	•	•	
Refrigerant Line Sets	L15-41-20 L15-41-30	L15-41-40 L15-41-50	•	•	•						•																		
	L15-65-30	L15-65-40 L15-65-50			•	•	•	•	•		•	•							•	•	•	•				•	•	•	
	Field Fabricate								•					•														•	

¹ Crankcase Heater (if not furnished) and Freezestat are recommended with Low Ambient Kit.
F = Factory Installed



**RESIDENTIAL
PRODUCT CATALOG**

OPTIONAL ACCESSORIES - ORDER SEPARATELY

	Model No.	16ACX				ML14XC1								13ACX								
		-024	-036	-048	-060	-018	-024	-030	-036	-041	-042	-047	-048	-059	-060	N018	N024	N030	N036	N042	N048	N060
Compressor Crankcase Heater	93M04	•	•			•	•	•	•		•					•	•	•	•			
	93M05																			•	•	•
	Factory			F	F					F		F	F	F	F							
Compressor Hard Start Kit	Copeland - 10J42					•	•	•			•		•			•	•	•	•	•	•	•
	LG - 88M91					•	•	•	•	•	•	•	•	•	•	•	•	•	•	•	•	•
	63W22	•			•																	
	63W24		•	•																		
Compressor Sound Cover	18J42	•	•	•	•	•	•	•	•	•	•	•	•	•	•	•	•	•	•	•	•	•
Compressor Low Ambient Cut-Off	45F08	•	•	•	•	•	•	•	•	•	•	•	•	•	•	•	•	•	•	•	•	•
Compressor Time-Off Control	47J27	•	•	•	•	•	•	•	•	•	•	•	•	•	•	•	•	•	•	•	•	•
Freezestat	3/8 in. tubing 93G35	•	•	•	•	•	•	•	•	•	•	•	•	•	•	•	•	•	•	•	•	•
	5/8 in. tubing 50A93	•	•	•	•	•	•	•	•	•	•	•	•	•	•	•	•	•	•	•	•	•
Indoor Blower Off Delay Relay	58M81	•	•	•	•	•	•	•	•	•	•	•	•	•	•	•	•	•	•	•	•	•
Loss of Charge Switch Kit	84M23					•	•	•	•	•	•	•	•	•	•	•	•	•	•	•	•	•
1 Low Ambient Kit (TXV systems only)	34M72	•	•	•	•	•	•	•	•	•	•	•	•	•	•	•	•	•	•	•	•	•
	68M04													•								
Refrigerant Line Sets	L15-26-20															•	•					
	L15-26-35																					
	L15-26-35																					
	L15-26-50																					
	L15-41-20	•				•	•	•										•	•	•		
	L15-41-30																					
	L15-41-40																					
	L15-41-50																					
	L15-65-30		•	•				•	•	•	•	•									•	•
	L15-65-40																					
	L15-65-50																					
	Field Fabricate				•																	
Unit Stand-Off Kit	94J45	•	•	•	•	•	•	•	•	•	•	•	•	•	•	•	•	•	•	•	•	•

¹ Crankcase Heater and Freezestat are recommended with Low Ambient Kit.

F = Factory Installed



HEAT PUMP OUTDOOR UNITS ML16XP1 MERIT® SERIES

RESIDENTIAL PRODUCT CATALOG

R-410A
SEER - Up to 17.00
1.5 to 5 Tons
Page 1
January 2022
Supersedes June 2021

FEATURES

Refrigerant System

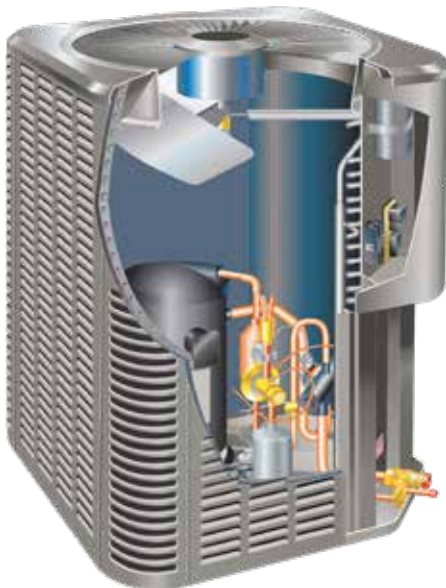
- Scroll Compressor
- Non-chlorine, ozone friendly, R-410A refrigerant
- Quantum™ Coil - Aluminum tube construction with enhanced ripple-edged aluminum fins
- Fully serviceable brass service valves
- Factory installed, hi-capacity liquid line drier
- Totally enclosed, direct drive outdoor fan motor with ball bearings
- Outdoor unit expansion valve
- Four-way interchange reversing valve

Controls

- Defrost control with integrated anti-short cycle
- High Pressure Switch
- Low Pressure Switch

Cabinet

- Steel louvered panels provide complete coil protection
- Louvered steel top fan guard
- PermaGuard™ zinc-coated base
- Heavy-gauge galvanized steel with powder paint finish
- Corner patch plate allows access to compressor components



ACCESSORIES

- See page 7
- Cabinet**
 - Unit Stand-off Kit
- Compressor**
 - Compressor Crankcase Heater
 - Compressor Hard Start Kit
 - Compressor Low Ambient Cut-Off
 - Compressor Sound Cover
- Controls**
 - iComfort® M30 Smart Wi-Fi Thermostat
 - Freezestat
 - Indoor Blower Off Delay Relay
 - Loss of Charge Switch
 - Low Ambient Kit
 - Mild Weather Kit
 - Monitor Kit (Service Light)
 - Outdoor Thermostat Kit
- Refrigerant System**
 - Check/Expansion Valve Kits
 - Refrigerant Line Kits

LIMITED WARRANTY

- Compressor - Five years
- All covered components - Five years

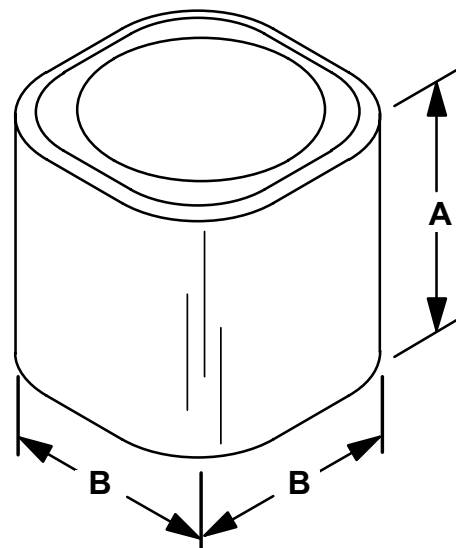
NOTE - Refer to Lennox Equipment Limited Warranty certificate included with equipment for details.

AHRI RATINGS

- AHRI Certified system match-ups and expanded ratings, visit www.LennoxPros.com

Model No.	A	B
ML16XP1-018	43-1/4 (1099)	28-1/4 (718)
ML16XP1-024 ML16XP1-030	33-1/4 (845)	28-1/4 (718)
ML16XP1-036	33-1/4 (845)	32-1/4 (819)
ML16XP1-042 ML16XP1-048 ML16XP1-060	43-1/4 (1099)	32-1/4 (819)

DIMENSIONS



NOTE - Due to Lennox' ongoing commitment to quality, Specifications, Ratings and Dimensions subject to change without notice and without incurring liability. Improper installation, adjustment, alteration, service or maintenance can cause property damage or personal injury. Installation and service must be performed by a qualified installer and servicing agency.

SPECIFICATIONS

General Data		Model No.	ML16XP1-018	ML16XP1-024	ML16XP1-030	ML16XP1-036
Nominal Tonnage			1.5	2	2.5	3
Indoor Unit Expansion Valve (TXV) (If needed)			12J18	12J18	12J18	12J19
¹ Sound Rating Number (dBA)			76	76	76	76
Connections (sweat)	Liquid line (o.d.) - in.		3/8	3/8	3/8	3/8
	Vapor (Suction) line (o.d.) - in.		3/4	3/4	3/4	7/8
Refrigerant		² R-410A charge furnished	6 lbs. 6 oz.	6 lbs. 11 oz.	7 lbs. 10 oz.	8 lbs. 7 oz.
Outdoor Fan	Diameter - in.		22	22	22	26
	No. of blades		3	3	3	3
	Motor hp		1/6	1/6	1/6	1/3
Shipping Data - lbs. 1 pkg.			180	188	188	214

ELECTRICAL DATA

Line voltage data - 60hz - 1 ph		208/230V-1ph	208/230V-1ph	208/230V-1ph	208/230V-1ph
³ Maximum overcurrent protection (amps)		20	20	25	35
⁴ Minimum circuit ampacity		12.2	13.6	16.4	20.9
Compressor	Rated load amps	9	10.1	12.3	14.7
	Locked rotor amps	48	52	63	75
	Power factor	0.98	0.98	0.96	0.99
Outdoor Fan Motor	Full load amps	1.0	1.0	1.0	2.6
	Locked rotor amps	1.9	1.9	1.9	---

SPECIFICATIONS

General Data		Model No.	ML16XP1-042	ML16XP1-048	ML16XP1-060
Nominal Tonnage			3.5	4	5
Indoor Unit Expansion Valve (TXV) (If needed)			12J20	12J20	12J20
¹ Sound Rating Number (dBA)			79	80	80
Connections (sweat)	Liquid line (o.d.) - in.		3/8	3/8	3/8
	Vapor (Suction) line (o.d.) - in.		7/8	7/8	1-1/8
Refrigerant		² R-410A charge furnished	10 lbs. 12 oz.	10 lbs. 7 oz.	10 lbs. 4 oz.
Outdoor Fan	Diameter - in.		26	26	26
	No. of blades		3	3	4
	Motor hp		1/3	1/3	1/3
Shipping Data - lbs. 1 pkg.			263	263	268

ELECTRICAL DATA

Line voltage data - 60hz - 1 ph		208/230V-1ph	208/230V-1ph	208/230V-1ph
³ Maximum overcurrent protection (amps)		40	40	50
⁴ Minimum circuit ampacity		25	25.8	30.4
Compressor	Rated load amps	15.9	18.5	22.2
	Locked rotor amps	112.3	124	127.9
	Power factor	0.99	0.99	0.99
Outdoor Fan Motor	Full load amps	2.6	2.6	2.6

NOTE - Extremes of operating range are plus 10% and minus 5% of line voltage.

¹ Sound Rating Number rated in accordance with test conditions included in AHRI Standard 270.

² Refrigerant charge sufficient for 15 ft. length of refrigerant lines. For longer line set requirements see the Installation Instructions for information about line set length and additional refrigerant charge required.

³ HACR type breaker or fuse.

⁴ Refer to National or Canadian Electrical Code manual to determine wire, fuse and disconnect size requirements.



NOTE - Due to Lennox' ongoing commitment to quality, Specifications, Ratings and Dimensions subject to change without notice and without incurring liability.

Improper installation, adjustment, alteration, service or maintenance can cause property damage or personal injury.

Installation and service must be performed by a qualified installer and servicing agency.



FEATURES

Refrigerant System

- Scroll Compressor
- Compressor crankcase heater (-036-042-48-060)
- Non-chlorine, ozone friendly, R-410A refrigerant
- Copper tube construction with enhanced ripple-edged aluminum fins
- Fully serviceable brass service valves
- Factory installed, hi-capacity liquid line drier
- Totally enclosed, direct drive outdoor fan motor with sleeve bearings

- Outdoor unit expansion valve
- Four-way interchange reversing valve

Controls

- Defrost control with integrated anti-short cycle
- High Pressure Switch
- Low Pressure Switch

Cabinet

- Steel louvered panels provide complete coil protection
- Louvered steel top fan guard
- PermaGuard™ zinc-coated base
- Heavy-gauge galvanized steel with powder paint finish
- Corner patch plate allows access to compressor components



LIMITED WARRANTY

- Compressor - Five years
- All covered components - Five years

NOTE - Refer to Lennox Equipment Limited Warranty certificate included with equipment for details.

AHRI RATINGS

- AHRI Certified system match-ups and expanded ratings, visit www.LennoxPros.com

Model No.	A	B
ML14XP1-018	43-1/4 (1099)	28-1/4 (718)
ML14XP1-024		
ML14XP1-030		
ML14XP1-036	37-1/4 (946)	28-1/4 (718)
ML14XP1-042	37-1/4 (946)	32-1/4 (819)
ML14XP1-048		
ML14XP1-060	43-1/4 (1099)	32-1/4 (819)

ACCESSORIES

- See page 7

Cabinet

- Unit Stand-off Kit

Compressor

- Compressor Crankcase Heater (-018-024-030)
- Compressor Hard Start Kit
- Compressor Low Ambient Cut-Off
- Compressor Sound Cover

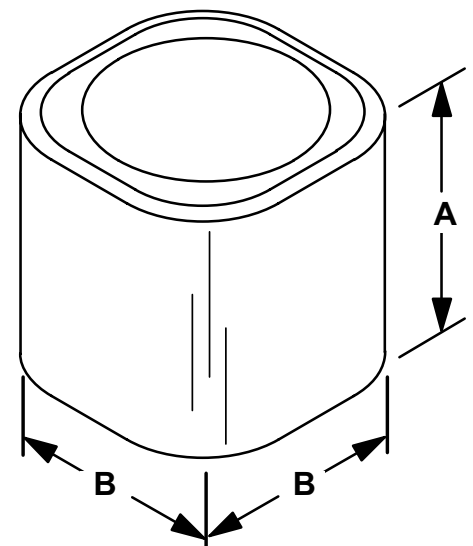
Controls

- iComfort® M30 Smart Wi-Fi Thermostat
- Freezestat
- Indoor Blower Off Delay Relay
- Loss of Charge Switch
- Low Ambient Kit
- Mild Weather Kit
- Monitor Kit (Service Light)
- Outdoor Thermostat Kit

Refrigerant System

- Check/Expansion Valve Kits
- Refrigerant Line Kits

DIMENSIONS



NOTE - Due to Lennox' ongoing commitment to quality, Specifications, Ratings and Dimensions subject to change without notice and without incurring liability. Improper installation, adjustment, alteration, service or maintenance can cause property damage or personal injury. Installation and service must be performed by a qualified installer and servicing agency.

SPECIFICATIONS

General Data		Model No.	ML14XP1-018	ML14XP1-024	ML14XP1-030	ML14XP1-036
Nominal Tonnage			1.5	2	2.5	3
Indoor Unit Expansion Valve (TXV) (If needed)			12J18	12J18	12J18	12J19
¹ Sound Rating Number (dBA)			76	76	76	76
Connections (sweat)		Liquid line o.d. - in.	3/8	3/8	3/8	3/8
		Vapor line o.d. - in.	3/4	3/4	3/4	7/8
² Refrigerant		R-410A charge furnished	6 lbs. 10 oz.	6 lbs. 2 oz.	6 lbs. 9 oz.	8 lbs. 8 oz.
Outdoor Fan		Diameter - in. and No. of blades	22 - 3	22 - 3	22 - 3	22 - 3
		Motor hp	1/6	1/6	1/6	1/6
		Cfm	2670	2670	2890	2870
		Rpm	867	867	847	839
		Watts	160	160	200	205
Shipping Data - lbs. 1 package			213	213	213	229

ELECTRICAL DATA

Line voltage data - 60 hz - 1ph		208/230V	208/230V	208/230V	208/230V	
³ Maximum overcurrent protection (amps)		20	20	25	30	
⁴ Minimum circuit ampacity		12.2	13.6	17.0	18.6	
Compressor		Rated Load Amps	9.0	10.1	12.8	14.1
		Locked Rotor Amps	48	52	67.8	72.2
		Power Factor	0.98	0.98	0.96	0.99
Outdoor Fan Motor		Full Load Amps	1.0	1.0	1.0	1.0
		Locked Rotor Amps	1.9	1.9	1.9	1.9

SPECIFICATIONS

General Data		Model No.	ML14XP1-042	ML14XP1-048	ML14XP1-060
Nominal Tonnage			3.5	4	5
Indoor Unit Expansion Valve (TXV) (If needed)			12J20	12J20	12J20
¹ Sound Rating Number (dBA)			79	80	80
Connections (sweat)		Liquid line o.d. - in.	3/8	3/8	3/8
		Vapor line o.d. - in.	7/8	7/8	1-1/8
² Refrigerant		R-410A charge furnished	9 lbs. 3 oz.	9 lbs. 15 oz.	11 lbs. 4 oz.
Outdoor Fan		Diameter - in. and No. of blades	22 - 4	22 - 4	22 - 4
		Motor hp	1/3	1/3	1/3
		Cfm	4347	4347	4500
		Rpm	843	843	830
		Watts	299	299	307
Shipping Data - lbs. 1 package			272	273	295

ELECTRICAL DATA

Line voltage data - 60 hz - 1ph		208/230V	208/230V	208/230V	
³ Maximum overcurrent protection (amps)		45	45	50	
⁴ Minimum circuit ampacity		25.8	26.2	29.6	
Compressor		Rated Load Amps	19.2	19.6	22.2
		Locked Rotor Amps	123.9	130	127.9
		Power Factor	0.99	0.99	0.99
Outdoor Fan Motor		Full Load Amps	1.8	1.8	1.8
		Locked Rotor Amps	2.9	2.9	2.9

NOTE - Extremes of operating range are plus 10% and minus 5% of line voltage.

¹ Sound Rating Number rated in accordance with test conditions included in AHRI Standard 270.

² Refrigerant charge sufficient for 15 ft. length of refrigerant lines.

³ HACR type circuit breaker or fuse.

⁴ Refer to National or Canadian Electrical Code manual to determine wire, fuse and disconnect size requirements.



NOTE - Due to Lennox' ongoing commitment to quality, Specifications, Ratings and Dimensions subject to change without notice and without incurring liability. Improper installation, adjustment, alteration, service or maintenance can cause property damage or personal injury. Installation and service must be performed by a qualified installer and servicing agency.



HEAT PUMP OUTDOOR UNITS 16HPX MERIT® SERIES

RESIDENTIAL PRODUCT CATALOG

R-410A - Two-Stage Scroll Compressor
SEER - Up to 17.00
2 to 5 Tons
Page 5
January 2022
Supersedes June 2021

FEATURES

Refrigerant System

- Two-Stage scroll compressor with crankcase heater
- Non-chlorine, ozone friendly, R-410A refrigerant
- Factory installed, hi-capacity liquid line drier
- Copper tube construction with enhanced ripple-edged aluminum fins
- Fully serviceable brass service valves
- Outdoor unit expansion valve
- Four-way interchange reversing valve

Controls

- High Pressure Switch
- Low Pressure Switch
- Discharge Temperature Switch
- Defrost control with integrated anti-short cycle

Cabinet

- Steel louvered panels provide complete coil protection
- Louvered steel top fan guard
- PermaGuard™ zinc-coated base
- Heavy-gauge galvanized steel with powder paint finish
- Corner patch plate allows access to compressor components



LIMITED WARRANTY

- Compressor - Five years
- All covered components - Five years

NOTE - Refer to Lennox Equipment Limited Warranty certificate included with equipment for details.

AHRI RATINGS

- AHRI Certified system match-ups and expanded ratings, visit www.LennoxPros.com

Model No.	A	B
16HPX-024	33-1/4 (845)	24-1/4 (616)
16HPX-036	33-1/4 (845)	32-1/4 (819)
16HPX-048	33-1/4 (845)	32-1/4 (819)
16HPX-060	43-1/4 (1099)	32-1/4 (819)

ACCESSORIES

- See page 7

Cabinet

- Unit Stand-Off Kit

Compressor

- Compressor Hard Start Kit
- Compressor Low Ambient Cut-Out
- Compressor Sound Cover

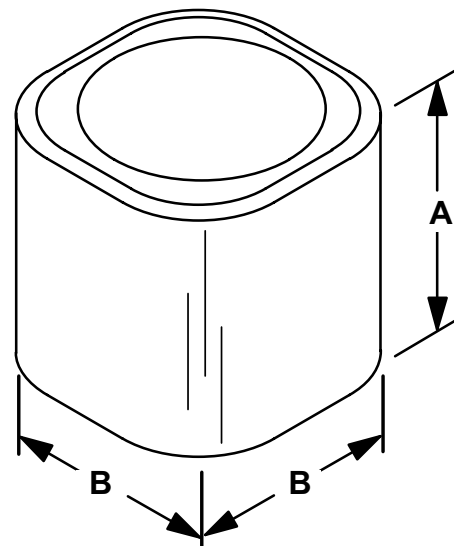
Controls

- iComfort® M30 Smart Wi-Fi Thermostat
- Freezestat
- Low Ambient Kit
- Indoor Blower Off Delay Relay
- Indoor Blower Speed Relay Kit
- Mild Weather Kit
- Monitor Kit (Service Light)
- Outdoor Thermostat Kit

Refrigerant System

- Check/Expansion Valve Kits
- Refrigerant Line Kits

DIMENSIONS



NOTE - Due to Lennox' ongoing commitment to quality, Specifications, Ratings and Dimensions subject to change without notice and without incurring liability. Improper installation, adjustment, alteration, service or maintenance can cause property damage or personal injury. Installation and service must be performed by a qualified installer and servicing agency.

SPECIFICATIONS

General Data		Model No.	16HPX-024	16HPX-036	16HPX-048	16HPX-060
Nominal Tonnage			2	3	4	5
Indoor Unit Expansion Valve (TXV) (If needed)			12J18	12J19	12J20	12J20
¹ Sound Rating Number (dBA)			74	82	81	80
Connections (sweat)	Liquid line (o.d.) - in.		3/8	3/8	3/8	3/8
	Vapor line (o.d.) - in.		3/4	7/8	7/8	1-1/8
² Refrigerant		R-410A charge furnished	7 lbs. 14 oz.	10 lbs. 8 oz.	9 lbs. 9 oz.	11 lbs. 8 oz.
Outdoor Fan	Diameter - in.		18	22	26	26
	No. of blades		3	4	3	3
	Motor hp		1/10	1/4	1/3	1/3
	Cfm - 1st stage		2232	4500	4500	3690
	2nd stage		---	---	---	4250
	Rpm - 1st stage		1075	825	825	700
	2nd stage		---	---	---	820
	Watts - 1st stage		145	290	290	130
	2nd stage		---	---	---	195
	Shipping Data - lbs. 1 pkg.			173	233	256

ELECTRICAL DATA

Line voltage data - 60hz		⁵ 230V-1ph	⁵ 230V-1ph	⁵ 230V-1ph	⁵ 230V-1ph
³ Maximum overcurrent protection (amps)		25	35	45	60
⁴ Minimum circuit ampacity		15.3	22.5	28.3	36.7
Compressor	Rated load amps	11.7	16.6	21.2	27.1
	Locked rotor amps	58	83	104	153
	Power factor	0.98	0.99	0.99	0.99
Outdoor Coil Fan Motor	Full load amps	0.7	1.7	1.8	2.8

NOTE - Extremes of operating range are plus 10% and minus 5% of line voltage.

¹ Sound Rating Number in accordance with test conditions included in AHRI Standard 270.

² Refrigerant charge sufficient for 15 ft. length of refrigerant lines. For longer line set requirements see the Installation Instructions for information about line set length and additional refrigerant charge required.

³ HACR type breaker or fuse.

⁴ Refer to National or Canadian Electrical Code manual to determine wire, fuse and disconnect size requirements.

⁵ Hard start kit is required in applications where the supply voltage is less than 230V.



NOTE - Due to Lennox' ongoing commitment to quality, Specifications, Ratings and Dimensions subject to change without notice and without incurring liability. Improper installation, adjustment, alteration, service or maintenance can cause property damage or personal injury. Installation and service must be performed by a qualified installer and servicing agency.



OPTIONAL ACCESSORIES - ORDER SEPARATELY

			Model No.	16HPX				ML16XP1						ML14XP1							
				-024	-036	-048	-060	-018	-024	-030	-036	-042	-048	-060	-018	-024	-030	-036	-042	-048	-060
1 Compressor Crankcase Heater	93M04																				
	93M05						•	•	•	•	•	•	•	•	•	•	•	•	•	•	
	Factory									F	F	F	F				F	F	F	F	
Compressor Hard Start Kit	Copeland	10J42		•	•													•	•	•	
		LG	88M91					•	•	•	•	•		•	•	•					•
		63W22	•																		
		63W24				•															
Compressor Sound Cover	18J42		•	•	•	•	•	•	•	•	•	•	•	•	•	•	•	•	•	•	
1 Freezestat	3/8 in. tubing	93G35	•	•	•	•	•	•	•	•	•	•	•	•	•	•	•	•	•	•	
	5/8 in. tubing	50A93	•	•	•	•	•	•	•	•	•	•	•	•	•	•	•	•	•	•	
Indoor Blower Off Delay Relay	58M81		•	•	•	•	•	•	•	•	•	•	•	•	•	•	•	•	•	•	
Loss of Charge Kit	84M23						•	•	•	•	•	•	•	•	•	•	•	•	•	•	
1 Low Ambient Kit	54M89		•	•	•		•	•	•	•	•	•	•	•	•	•	•	•	•	•	
	68M04					•															
Mild Weather Kit	11B97		•	•	•	•	•	•	•	•	•	•	•	•	•	•	•	•	•	•	
Monitor Kit - Service Light	76F53		•	•	•	•	•	•	•	•	•	•	•	•	•	•	•	•	•	•	
Outdoor Thermostat Kit	Thermostat	10Z23	•	•	•	•	•	•	•	•	•	•	•	•	•	•	•	•	•	•	
	Mounting Box	31461	•	•	•	•	•	•	•	•	•	•	•	•	•	•	•	•	•	•	
Refrigerant Line Sets	L15-41-20	L15-41-40	•				•	•	•				•	•	•						
	L15-41-30	L15-41-50																			
	L15-65-30	L15-65-40																			
		L15-65-50		•	•				•	•	•	•				•	•	•	•	•	
	Field Fabricate					•															
Unit Stand-Off Kit	94J45		•	•	•	•	•	•	•	•	•	•	•	•	•	•	•	•	•	•	

¹ Crankcase Heater (if not furnished) and Freezestat are recommended with Low Ambient Kit.
F = Factory Installed.



INDOOR COILS CX35 (CASED)

RESIDENTIAL PRODUCT CATALOG

Upflow - Cased - R-410A - Factory TXV - Quantum™ Coil

1.5 to 5 Tons

Page 1

January 2022

Supersedes June 2021

FEATURES

Refrigerant System

- Quantum™ Coil - Aluminum tubing, hairpins, distributor and header tubes
- Copper refrigerant sweat connections on both liquid and suction lines for easy brazing
- Ripple-edged aluminum fins
- Twin coil construction in an "A" configuration for large surface area
- UV-resistant polymer drain pan with dual fpt drain connections
- Factory installed R-410A Check/Expansion Valve furnished

Cabinet

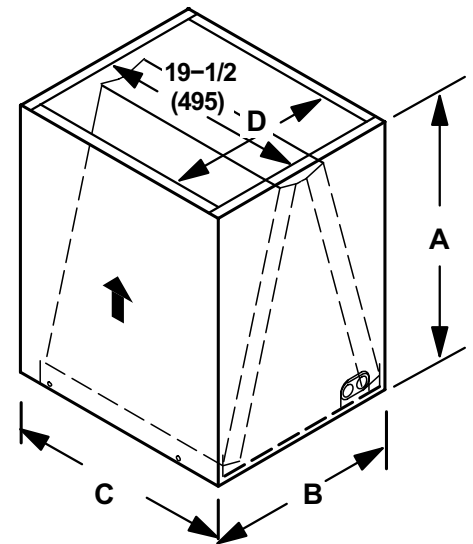
- Pre-painted cabinet finish
- Fully insulated with thick fiberglass insulation

Coil Match-Up

- All CX35 cased upflow indoor coils match furnaces with same letter designation in model number



DIMENSIONS



LIMITED WARRANTY

- All covered components - Five years

NOTE - Refer to Lennox Equipment Limited Warranty certificate included with equipment for details.

Cased Model No.	A		B		C		D		Inlet - W		Inlet - D	
	in.	mm	in.	mm	in.	mm	in.	mm	in.	mm	in.	mm
CX35-18/24A-6F	16-1/2	419	14-1/2	368	21	533	13	330	13-3/8	340	20-7/16	519
CX35-18/24B-6F	16-1/2	419	17-1/2	445	21	533	16	406	16-3/8	416	20-7/16	519
CX35-24A-6F	18-1/2	470	14-1/2	368	21	533	13	330	13-3/8	340	20-7/16	519
CX35-24B-6F	18-1/2	470	17-1/2	445	21	533	16	406	16-3/8	416	20-7/16	519
CX35-30A-6F	22-1/2	572	14-1/2	368	21	533	13	330	13-3/8	340	20-7/16	519
CX35-30B-6F	22-1/2	572	17-1/2	445	21	533	16	406	16-3/8	416	20-7/16	519
CX35-30/36A-6F	24-1/2	622	14-1/2	368	21	533	13	330	13-3/8	340	20-7/16	519
CX35-30/36B-6F	24-1/2	622	17-1/2	445	21	533	16	406	16-3/8	416	20-7/16	519
CX35-30/36C-6F	24-1/2	622	21	533	21	533	19-1/2	495	19-7/8	505	20-7/16	519
CX35-36A-6F	24-1/2	622	14-1/2	368	21	533	13	330	13-3/8	340	20-7/16	519
CX35-36B-6F	24-1/2	622	17-1/2	445	21	533	16	406	16-3/8	416	20-7/16	519
CX35-48B-6F	27-1/2	699	17-1/2	445	21	533	16	406	16-3/8	416	20-7/16	519
CX35-48C-2F	27-1/2	699	21	533	21	533	19-1/2	495	19-7/8	505	20-7/16	519
CX35-49C-2F	29-1/2	749	21	533	22	559	19-1/2	495	19-7/8	505	21-7/16	545
CX35-50/60C-6F	27-1/2	699	21	533	21	533	19-1/2	495	19-7/8	505	20-7/16	519
CX35-60C-2F	31-1/2	800	21	533	22	559	19-1/2	495	19-7/8	505	21-7/16	545
CX35-60D-6F	29-1/2	749	24-1/2	622	21	533	23	584	23-3/8	594	20-7/16	519

NOTE- CX35-60D coil is positioned with coil running left to right inside the cabinet, all other coil sizes are positioned like drawing.

NOTE - Due to Lennox' ongoing commitment to quality, Specifications, Ratings and Dimensions subject to change without notice and without incurring liability. Improper installation, adjustment, alteration, service or maintenance can cause property damage or personal injury. Installation and service must be performed by a qualified installer and servicing agency.

SPECIFICATIONS		1.5 TO 2 TON			
General Data	Model No.	CX35-18/24A-6F	CX35-18/24B-6F	CX35-24A-6F	CX35-24B-6F
	Nominal size - Tons	1.5 / 2	1.5 / 2	2	2
	Factory Installed Expansion Valve	12J18	12J18	12J18	12J18
Line	Suction / vapor o.d. - sweat	3/4	3/4	3/4	3/4
Connections in.	Liquid o.d. - sweat	3/8	3/8	3/8	3/8
	Condensate drain (fpt)	(2) 3/4	(2) 3/4	(2) 3/4	(2) 3/4
Shipping Data - lbs.		30	34	38	43

SPECIFICATIONS		2.5 TO 3 TON			
General Data	Model No.	CX35-30A-6F	CX35-30B-6F	CX35-30/36A-6F	CX35-30/36B-6F
	Nominal size - Tons	2.5	2.5	2.5 / 3	2.5 / 3
	Factory Installed Expansion Valve	12J18	12J18	12J19	12J19
Line	Suction / vapor o.d. - sweat	3/4	3/4	3/4	3/4
Connections in.	Liquid o.d. - sweat	3/8	3/8	3/8	3/8
	Condensate drain (fpt)	(2) 3/4	(2) 3/4	(2) 3/4	(2) 3/4
Shipping Data - lbs.		45	50	41	45

SPECIFICATIONS		2.5 TO 4 TON				
General Data	Model No.	CX35-30/36C-6F	CX35-36A-6F	CX35-36B-6F	CX35-48B-6F	CX35-48C-6F
	Nominal size - Tons	2.5 / 3	3	3	3.5 / 4	3.5 / 4
	Factory Installed Expansion Valve	12J19	12J19	12J19	12J20	12J20
Line	Suction / vapor o.d. - sweat	3/4	3/4	3/4	7/8	7/8
Connections in.	Liquid o.d. - sweat	3/8	3/8	3/8	3/8	3/8
	Condensate drain (fpt)	(2) 3/4	(2) 3/4	(2) 3/4	(2) 3/4	(2) 3/4
Shipping Data - lbs.		48	46	50	55	60

SPECIFICATIONS		4 TO 5 TON			
General Data	Model No.	CX35-49C-6F	CX35-50/60C-6F	CX35-60C-6F	CX35-60D-6F
	Nominal size - Tons	4	4 / 5	5	5
	Factory Installed Expansion Valve	12J20	12J20	12J20	12J20
Line	Suction / vapor o.d. - sweat	7/8	7/8	7/8	7/8
Connections in.	Liquid o.d. - sweat	3/8	3/8	3/8	3/8
	Condensate drain (fpt)	(2) 3/4	(2) 3/4	(2) 3/4	(2) 3/4
Shipping Data - lbs.		70	60	73	72



NOTE – Due to Lennox' ongoing commitment to quality, Specifications, Ratings and Dimensions subject to change without notice and without incurring liability. Improper installation, adjustment, alteration, service or maintenance can cause property damage or personal injury. Installation and service must be performed by a qualified installer and servicing agency.



INDOOR COILS C35 (CASED)

RESIDENTIAL PRODUCT CATALOG

Upflow - Cased - Quantum™ Coil

1.5 to 5 Tons

Page 3

January 2022

Supersedes June 2021

FEATURES

Refrigerant System

- Quantum™ Coil - Aluminum tubing, hairpins, distributor and header tubes
- Copper refrigerant sweat connections on both liquid and suction lines for easy brazing
- Ripple-edged aluminum fins
- Twin coil construction in an "A" configuration for large surface area
- UV-resistant polymer drain pan with dual fpt drain connections
- All models applicable to Lennox RFCIV refrigerant metering system
- Optional expansion valve is available

Cabinet

- Pre-painted cabinet finish
- Fully insulated with thick fiberglass insulation

Coil Match-Up

- All C35 cased upflow indoor coils match furnaces with same letter designation in model number



LIMITED WARRANTY

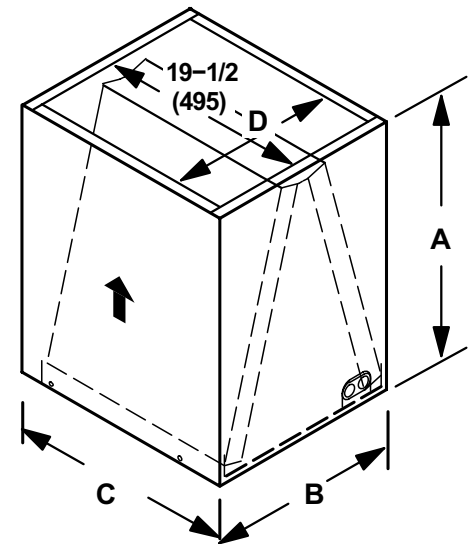
- All covered components - Five years

NOTE - Refer to Lennox Equipment Limited Warranty certificate included with equipment for details.

ACCESSORIES

- Expansion Valve Kits (required)

DIMENSIONS



Model No.	A		B		C		D		Inlet - W		Inlet - D	
	in.	mm	in.	mm	in.	mm	in.	mm	in.	mm	in.	mm
C35-18/24A-2F	16-1/2	419	14-1/2	368	21	533	13	330	13-3/8	340	20-7/16	519
C35-18/24B-2F	16-1/2	419	17-1/2	445	21	533	16	406	16-3/8	416	20-7/16	519
C35-24A-2F	18-1/2	470	14-1/2	368	21	533	13	330	13-3/8	340	20-7/16	519
C35-24B-2F	18-1/2	470	17-1/2	445	21	533	16	406	16-3/8	416	20-7/16	519
C35-30A-2F	22-1/2	572	14-1/2	368	21	533	13	330	13-3/8	340	20-7/16	519
C35-30B-2F	22-1/2	572	17-1/2	445	21	533	16	406	16-3/8	416	20-7/16	519
C35-30/36A-2F	24-1/2	622	14-1/2	368	21	533	13	330	13-3/8	340	20-7/16	519
C35-30/36B-2F	24-1/2	622	17-1/2	445	21	533	16	406	16-3/8	416	20-7/16	519
C35-30/36C-2F	24-1/2	622	21	533	21	533	19-1/2	495	19-7/8	505	20-7/16	519
C35-36A-2F	24-1/2	622	14-1/2	368	21	533	13	330	13-3/8	340	20-7/16	519
C35-36B-2F	24-1/2	622	17-1/2	445	21	533	16	406	16-3/8	416	20-7/16	519
C35-48B-2F	27-1/2	699	17-1/2	445	21	533	16	406	16-3/8	416	20-7/16	519
C35-48C-2F	27-1/2	699	21	533	21	533	19-1/2	495	19-7/8	505	20-7/16	519
C35-49C-2F	29-1/2	749	21	533	22	559	19-1/2	495	19-7/8	505	21-7/16	545
C35-50/60C-2F	27-1/2	699	21	533	21	533	19-1/2	495	19-7/8	505	20-7/16	519
C35-60C-2F	31-1/2	800	21	533	22	559	19-1/2	495	19-7/8	505	21-7/16	545
C35-60D-2F	29-1/2	749	24-1/2	622	21	533	23	584	23	584	20-7/16	519

NOTE- C35-60D coil is positioned with coil running left to right, all other coil sizes are positioned like drawing.

NOTE - Due to Lennox' ongoing commitment to quality, Specifications, Ratings and Dimensions subject to change without notice and without incurring liability. Improper installation, adjustment, alteration, service or maintenance can cause property damage or personal injury. Installation and service must be performed by a qualified installer and servicing agency.

SPECIFICATIONS		1.5 TO 2 TON			
General Data	Model No.	C35-18/24A-2F	C35-18/24B-2F	C35-24A-2F	C35-24B-2F
	Nominal size - Tons	1.5 / 2	1.5 / 2	2	2
Line Connections in.	Suction / vapor o.d. - sweat	3/4	3/4	3/4	3/4
	Liquid o.d. - sweat	3/8	3/8	3/8	3/8
	Condensate drain (fpt)	(2) 3/4	(2) 3/4	(2) 3/4	(2) 3/4
RFCIV metering device orifice size		0.053	0.053	0.057	0.057
Shipping Data - lbs.		30	34	38	43

SPECIFICATIONS		2.5 TO 3 TON			
General Data	Model No.	C35-30A-2F	C35-30B-2F	C35-30/36A-2F	C35-30/36B-2F
	Nominal size - Tons	2.5	2.5	2.5 / 3	2.5 / 3
Line Connections in.	Suction / vapor o.d. - sweat	3/4	3/4	3/4	3/4
	Liquid o.d. - sweat	3/8	3/8	3/8	3/8
	Condensate drain (fpt)	(2) 3/4	(2) 3/4	(2) 3/4	(2) 3/4
RFCIV metering device orifice size		0.067	0.067	0.057	0.057
Shipping Data - lbs.		45	50	41	45

SPECIFICATIONS		2.5 TO 4 TON				
General Data	Model No.	C35-30/36C-2F	C35-36A-2F	C35-36B-2F	C35-48B-2F	C35-48C-2F
	Nominal size - Tons	2.5 / 3	3	3	3.5 / 4	3.5 / 4
Line Connections in.	Suction / vapor o.d. - sweat	3/4	3/4	3/4	7/8	7/8
	Liquid o.d. - sweat	3/8	3/8	3/8	3/8	3/8
	Condensate drain (fpt)	(2) 3/4	(2) 3/4	(2) 3/4	(2) 3/4	(2) 3/4
RFCIV metering device orifice size		0.057	0.070	0.070	0.071	0.071
Shipping Data - lbs.		48	46	50	55	60

SPECIFICATIONS		4 TO 5 TON			
General Data	Model No.	C35-49C-2F	C35-50/60C-2F	C35-60C-2F	C35-60D-2F
	Nominal size - Tons	4	4 / 5	5	5
Line Connections in.	Suction / vapor o.d. - sweat	7/8	7/8	7/8	7/8
	Liquid o.d. - sweat	3/8	3/8	3/8	3/8
	Condensate drain (fpt)	(2) 3/4	(2) 3/4	(2) 3/4	(2) 3/4
RFCIV metering device orifice size		0.076	0.070	0.077	0.077
Shipping Data - lbs.		70	60	73	72



NOTE – Due to Lennox' ongoing commitment to quality, Specifications, Ratings and Dimensions subject to change without notice and without incurring liability. Improper installation, adjustment, alteration, service or maintenance can cause property damage or personal injury. Installation and service must be performed by a qualified installer and servicing agency.



INDOOR COILS C35 (UNCASED)

RESIDENTIAL PRODUCT CATALOG

Upflow - Uncased - Quantum™ Coil
1.5 to 5 Tons
Page 5
January 2022
Supersedes June 2021

FEATURES

Refrigerant System

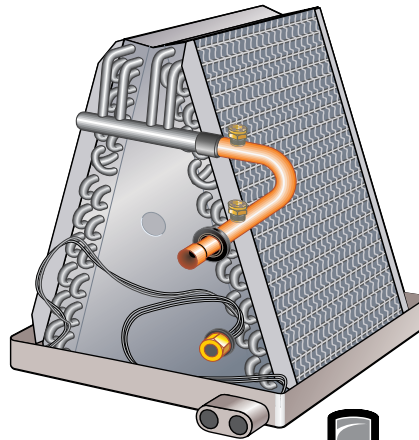
- Quantum™ Coil - Aluminum tubing, hairpins, distributor and header tubes
- Copper refrigerant sweat connections on both liquid and suction lines for easy brazing
- Ripple-edged aluminum fins
- Twin coil construction in an "A" configuration for large surface area
- UV-resistant polymer drain pan with dual fpt drain connections

Refrigerant Control Choice

- All models applicable to Lennox RFCIV refrigerant metering system when matched with specific air conditioners
- Optional expansion valve is available

Coil Match-Up

- Uncased coils match furnaces but require adaptor base or field fabricated transition



LIMITED WARRANTY

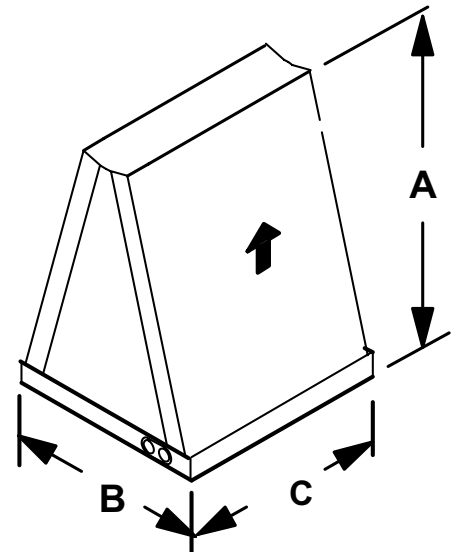
- All covered components - Five years

NOTE - Refer to Lennox Equipment Limited Warranty certificate included with equipment for details.

ACCESSORIES

- Adjustable Coil / Adaptor Seal
- Expansion Valve Kits

DIMENSIONS



Model No.	A		B		C	
	in.	mm	in.	mm	in.	mm
C35-18/24A	14-1/8	359	13	330	21-1/4	540
C35-18/24B	14-1/8	359	15-1/2	394	21-1/4	540
C35-24A	16-3/8	416	13	330	21-1/4	540
C35-24B	16-3/8	416	15-1/2	394	21-1/4	540
C35-30A	20-3/4	527	13	330	21-1/4	540
C35-30B	20-3/4	527	15-1/2	394	21-1/4	540
C35-30/36A	22-1/4	565	13	330	21-1/4	540
C35-30/36B	22-1/4	565	15-1/2	394	21-1/4	540
C35-30/36C	22-1/4	565	20	508	21-1/4	540
C35-36A	22-3/8	568	13	330	21-1/4	540
C35-36B	22-3/8	568	15-1/2	394	21-1/4	540
C35-48B	26-1/4	667	15-1/2	394	21-1/4	540
C35-48C	26-1/4	667	20	508	21-1/4	540
C35-49C	28-1/2	724	21-1/2	546	21-1/4	540
C35-50/60C	25-7/8	657	20	508	21-1/4	540
C35-60C	30-5/8	778	21-1/2	546	21-1/4	540
C35-60D	28	711	23	584	19-1/2	495

NOTE- C35-60D coil is positioned with coil running left to right, all other coil sizes are positioned like drawing.

NOTE - Due to Lennox' ongoing commitment to quality, Specifications, Ratings and Dimensions subject to change without notice and without incurring liability. Improper installation, adjustment, alteration, service or maintenance can cause property damage or personal injury. Installation and service must be performed by a qualified installer and servicing agency.

SPECIFICATIONS		1.5 TO 2 TON			
General Data	Model No.	C35-18/24A-2	C35-18/24B-2	C35-24A-2	C35-24B-2
	Nominal size - Tons	1.5 / 2	1.5 / 2	2	2
Line Connections in.	Suction / vapor o.d. - sweat	3/4	3/4	3/4	3/4
	Liquid o.d. - sweat	3/8	3/8	3/8	3/8
	Condensate drain (fpt)	(2) 3/4	(2) 3/4	(2) 3/4	(2) 3/4
RFCIV metering device orifice size		0.053	0.053	0.057	0.057
Shipping Data - lbs.		18	20	23	24

SPECIFICATIONS		2.5 TO 3 TON			
General Data	Model No.	C35-30A-2	C35-30B-2	C35-30/36A-2	C35-30/36B-2
	Nominal size - Tons	2.5	2.5	2.5 / 3	2.5 / 3
Line Connections in.	Suction / vapor o.d. - sweat	3/4	3/4	3/4	3/4
	Liquid o.d. - sweat	3/8	3/8	3/8	3/8
	Condensate drain (fpt)	(2) 3/4	(2) 3/4	(2) 3/4	(2) 3/4
RFCIV metering device orifice size		0.067	0.067	0.057	0.057
Shipping Data - lbs.		31	32	26	27

SPECIFICATIONS		2.5 TO 4 TON				
General Data	Model No.	C35-30/36C-2	C35-36A-2	C35-36B-2	C35-48B-2	C35-48C-2
	Nominal size - Tons	2.5 / 3	3	3	3.5 / 4	3.5 / 4
Line Connections in.	Suction / vapor o.d. - sweat	3/4	3/4	3/4	7/8	7/8
	Liquid o.d. - sweat	3/8	3/8	3/8	3/8	3/8
	Condensate drain (fpt)	(2) 3/4	(2) 3/4	(2) 3/4	(2) 3/4	(2) 3/4
RFCIV metering device orifice size		0.057	0.070	0.070	0.071	0.071
Shipping Data - lbs. Uncased		29	31	33	43	44

SPECIFICATIONS		4 TO 5 TON			
General Data	Model No.	C35-49C-2	C35-50/60C-2	C35-60C-2	C35-60D-2
	Nominal size - Tons	4	4 / 5	5	5
Line Connections in.	Suction / vapor o.d. - sweat	7/8	7/8	7/8	7/8
	Liquid o.d. - sweat	3/8	3/8	3/8	3/8
	Condensate drain (fpt)	(2) 3/4	(2) 3/4	(2) 3/4	(2) 3/4
RFCIV metering device orifice size		0.076	0.070	0.077	0.077
Shipping Data - lbs. Uncased		53	40	58	48

OPTIONAL ACCESSORIES - ORDER SEPARATELY

Adjustable Coil Adaptor/Seal (Ten Pack)	11L09
---	-------



NOTE – Due to Lennox' ongoing commitment to quality, Specifications, Ratings and Dimensions subject to change without notice and without incurring liability. Improper installation, adjustment, alteration, service or maintenance can cause property damage or personal injury. Installation and service must be performed by a qualified installer and servicing agency.



INDOOR COILS CHX35

RESIDENTIAL PRODUCT CATALOG

Horizontal - Cased - R410A - Factory TXV

1.5 to 5 Tons

Page 7

January 2022

Supersedes June 2021



FEATURES

Refrigerant System

- Quantum™ Coil - Aluminum tubing, hairpins, distributor and header tubes
- Copper refrigerant sweat connections on both liquid and suction lines for easy brazing
- Ripple-edged aluminum fins
- Twin coil construction in an "A" configuration for large surface area
- UV-resistant polymer drain pan with dual fpt drain connections
- Factory installed R-410A Check/Expansion Valve furnished

Cabinet

- Pre-painted cabinet finish
- Fully insulated with thick fiberglass insulation

Coil Match-Up

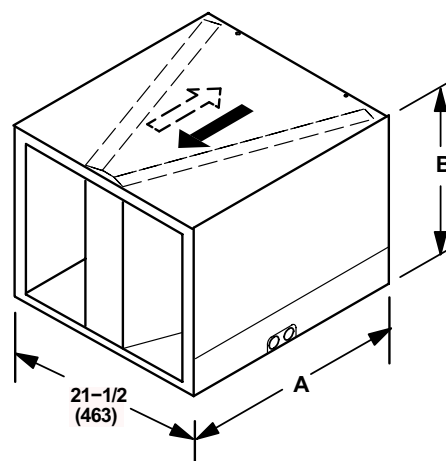
- All CHX35 cased horizontal indoor coils match furnaces with same letter designation in model number

LIMITED WARRANTY

- All covered components - Five years

NOTE - Refer to Lennox Equipment Limited Warranty certificate included with equipment for details.

DIMENSIONS



Model No.	A		B		Supply Opening				Return Opening			
					Height		Width		Height		Width	
	in.	mm	in.	mm	in.	mm	in.	mm	in.	mm	in.	mm
CHX35-18A-6F	26-1/2	673	14-1/2	368	13	330	20	508	13-3/8	340	20-3/8	518
CHX35-24A-6F	26-1/2	673	14-1/2	368	13	330	20	508	13-3/8	340	20-3/8	518
CHX35-24B6F	26-1/2	673	17-1/2	444	16	406	20	508	16-3/8	416	20-3/8	518
CHX35-30A-6F	31-1/2	800	14-1/2	368	13	330	20	508	13-3/8	340	20-3/8	518
CHX35-30B-6F	26-1/2	673	17-1/2	444	16	406	20	508	16-3/8	416	20-3/8	518
CHX35-36A-6F	26-1/2	673	14-1/2	368	13	330	20	508	13-3/8	340	20-3/8	518
CHX35-36B-6F	26-1/2	673	17-1/2	444	16	406	20	508	16-3/8	416	20-3/8	518
CHX35-36C-6F	26-1/2	673	21	533	19-1/2	495	20	508	19-7/8	505	20-3/8	518
CHX35-42B-6F	31-1/2	800	17-1/2	444	16	406	20	508	16-3/8	416	20-3/8	518
CHX35-42C-6F	26-1/2	673	21	533	19-1/2	495	20	508	19-7/8	505	20-3/8	518
CHX35-48B-6F	31-1/2	800	17-1/2	444	16	406	20	508	16-3/8	416	20-3/8	518
CHX35-48C-6F	26-1/2	673	21	533	19-1/2	495	20	508	19-7/8	505	20-3/8	518
CHX35-51C-6F	31-1/2	800	21	533	19-1/2	495	20	508	19-7/8	505	20-3/8	518
CHX35-60D-6F	31-1/2	800	24-1/2	622	23	584	20	508	23-3/8	594	20-3/8	518

NOTE - Due to Lennox' ongoing commitment to quality, Specifications, Ratings and Dimensions subject to change without notice and without incurring liability. Improper installation, adjustment, alteration, service or maintenance can cause property damage or personal injury. Installation and service must be performed by a qualified installer and servicing agency.

SPECIFICATIONS**1.5 TO 3 TON**

General Data		Model No.	CHX35 -18A-6F	CHX35 -24A-6F	CHX35 -24B-6F	CHX35 -30A-6F	CHX35 -30B-6F	CHX35 -36A-6F	CHX35 -36B-6F
	Nominal size - tons		1.5	2	2	2.5	2.5	3	3
	Factory installed expansion valve		12J18	12J18	12J18	12J18	12J18	12J19	12J19
Line connections in.	Suction o.d. - sweat		3/4	3/4	3/4	3/4	3/4	3/4	3/4
	Liquid o.d. - sweat		3/8	3/8	3/8	3/8	3/8	3/8	3/8
	Condensate drain (fpt)		(2) 3/4	(2) 3/4	(2) 3/4	(2) 3/4	(2) 3/4	(2) 3/4	(2) 3/4
Matching Lennox Furnace - Cabinet Width Designation			A	A	B	A	B	A	B
Coil & Furnace Cabinet Height - in.			14-1/2	14-1/2	17-1/2	14-1/2	17-1/2	14-1/2	17-1/2
Shipping Data - lbs.			44	46	50	56	54	48	49

SPECIFICATIONS**3 TO 5 TON**

General Data		Model No.	CHX35 -36C-6F	CHX35 -42B-6F	CHX35 -42C-6F	CHX35 -48B-6F	CHX35 -48C-6F	CHX35 -51/61C-6F	CHX35 -60D-6F
	Nominal size - Tons		3	3.5	3.5	3.5/4	3.5/4	4/5	5
	Factory installed expansion valve		12J19	12J20	12J20	12J20	12J20	12J20	12J20
Line connections in.	Suction o.d. - sweat		3/4	7/8	7/8	7/8	7/8	7/8	7/8
	Liquid o.d. - sweat		3/8	3/8	3/8	3/8	3/8	3/8	3/8
	Condensate drain (fpt)		(2) 3/4	(2) 3/4	(2) 3/4	(2) 3/4	(2) 3/4	(2) 3/4	(2) 3/4
Matching Lennox Furnace - Cabinet Width Designation			C	B	C	B	C	C	D
Coil & Furnace Cabinet Height - in.			21	17-1/2	21	17-1/2	21	21	24-1/2
Shipping Data - lbs.			56	67	67	61	60	70	79



NOTE – Due to Lennox' ongoing commitment to quality, Specifications, Ratings and Dimensions subject to change without notice and without incurring liability. Improper installation, adjustment, alteration, service or maintenance can cause property damage or personal injury. Installation and service must be performed by a qualified installer and servicing agency.



**RESIDENTIAL
PRODUCT CATALOG**

Horizontal - Cased
1.5 to 5 Tons
Page 9
January 2022
Supersedes June 2021

FEATURES

Refrigerant System

- Quantum™ Coil - Aluminum tubing, hairpins, distributor and header tubes
- Copper refrigerant sweat connections on both liquid and suction lines for easy brazing
- Ripple-edged aluminum fins
- Twin coil construction in an "A" configuration for large surface area
- UV-resistant polymer drain pan with dual fpt drain connections
- Optional expansion valve is required

Cabinet

- Pre-painted finish
- Fully insulated cabinet with thick fiberglass insulation

Coil Match-Up

- All CH35 cased horizontal indoor coils match furnaces with same letter designation in model number

LIMITED WARRANTY

- All covered components - Five years

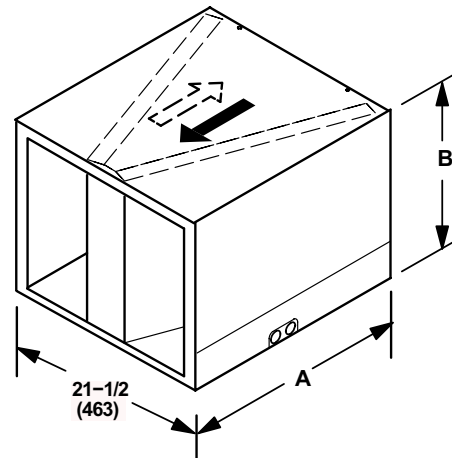
NOTE - Refer to Lennox Equipment Limited Warranty certificate included with equipment for details.

ACCESSORIES

- Expansion Valve Kits (required)



DIMENSIONS



Model No.	A		B		Supply Opening				Return Opening			
					Height		Width		Height		Width	
	in.	mm	in.	mm	in.	mm	in.	mm	in.	mm	in.	mm
CH35-18A-2F	26-1/2	673	14-1/2	368	13	330	20	508	13-3/8	340	20-3/8	518
CH35-24A-2F	26-1/2	673	14-1/2	368	13	330	20	508	13-3/8	340	20-3/8	518
CH35-24B-2F	26-1/2	673	17-1/2	444	16	406	20	508	16-3/8	416	20-3/8	518
CH35-30A-2F	31-1/2	800	14-1/2	368	13	330	20	508	13-3/8	340	20-3/8	518
CH35-30B-2F	26-1/2	673	17-1/2	444	16	406	20	508	16-3/8	416	20-3/8	518
CH35-36A-2F	26-1/2	673	14-1/2	368	13	330	20	508	13-3/8	340	20-3/8	518
CH35-36B-2F	26-1/2	673	17-1/2	444	16	406	20	508	16-3/8	416	20-3/8	518
CH35-36C-2F	26-1/2	673	21	533	19-1/2	495	20	508	19-7/8	505	20-3/8	518
CH35-42B-2F	31-1/2	800	17-1/2	444	16	406	20	508	16-3/8	416	20-3/8	518
CH35-42C-2F	26-1/2	673	21	533	19-1/2	495	20	508	19-7/8	505	20-3/8	518
CH35-48B-2F	31-1/2	800	17-1/2	444	16	406	20	508	16-3/8	416	20-3/8	518
CH35-48C-2F	26-1/2	673	21	533	19-1/2	495	20	508	19-7/8	505	20-3/8	518
CH35-51C-2F	31-1/2	800	21	533	19-1/2	495	20	508	19-7/8	505	20-3/8	518
CH35-60D-2F	31-1/2	800	24-1/2	622	23	584	20	508	23-3/8	594	20-3/8	518

NOTE - Due to Lennox' ongoing commitment to quality, Specifications, Ratings and Dimensions subject to change without notice and without incurring liability. Improper installation, adjustment, alteration, service or maintenance can cause property damage or personal injury. Installation and service must be performed by a qualified installer and servicing agency.

SPECIFICATIONS 1.5 TO 3 TON

General Data		Model No.	CH35 -18A-2F	CH35 -24A-2F	CH35 -24B-2F	CH35 -30A-2F	CH35 -30B-2F	CH35 -36A-2F	CH35 -36B-2F
Nominal size - Tons			1.5	2	2	2.5	2.5	3	3
Line connections in.	Suction o.d. - sweat		3/4	3/4	3/4	3/4	3/4	3/4	3/4
	Liquid o.d. - sweat		3/8	3/8	3/8	3/8	3/8	3/8	3/8
	Condensate drain (fpt)		(2) 3/4	(2) 3/4	(2) 3/4	(2) 3/4	(2) 3/4	(2) 3/4	(2) 3/4
Shipping Data - lbs.			43	45	49	55	53	47	48

SPECIFICATIONS 3 TO 5 TON

General Data		Model No.	CH35 -36C-2F	CH35 -42B-2F	CH35 -42C-2F	CH35 -48B-2F	CH35 -48C-2F	CH35 -51C-2F	CH35 -60D-2F
Nominal size - Tons			3	3.5	3.5	3.5/4	3.5/4	4	5
Line connections in.	Suction o.d. - sweat		3/4	7/8	7/8	7/8	7/8	7/8	7/8
	Liquid o.d. - sweat		3/8	3/8	3/8	3/8	3/8	3/8	3/8
	Condensate drain (fpt)		(2) 3/4	(2) 3/4	(2) 3/4	(2) 3/4	(2) 3/4	(2) 3/4	(2) 3/4
Shipping Data - lbs.			55	66	60	60	59	69	78



NOTE – Due to Lennox’ ongoing commitment to quality, Specifications, Ratings and Dimensions subject to change without notice and without incurring liability. Improper installation, adjustment, alteration, service or maintenance can cause property damage or personal injury. Installation and service must be performed by a qualified installer and servicing agency.

FEATURES

Refrigerant System

- Copper tube construction with enhanced ripple-edged aluminum fins
- Non-corrosive drain pan with dual fpt drain connections

Refrigerant Control Choice

- All models applicable to Lennox RFCIV refrigerant metering system
- Optional expansion valves available

Cabinet

- Pre-painted cabinet finish
- Fully insulated with thick fiberglass insulation

LIMITED WARRANTY

- All covered components - Five years

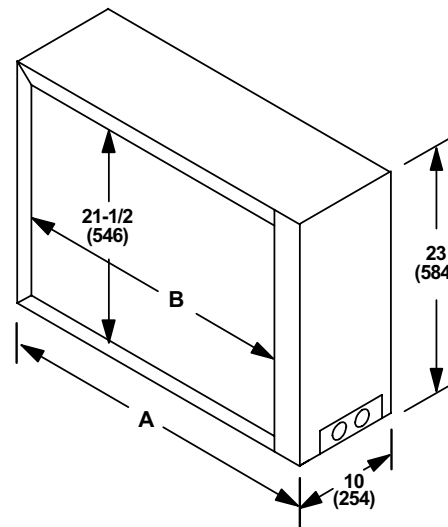
NOTE - Refer to Lennox Equipment Limited Warranty certificate included with equipment for details.

ACCESSORIES

- Expansion Valve Kits



DIMENSIONS



NOTE - Opening same both ends.

Model No.	A		B	
	in.	mm	in.	mm
CH23-21	27	686	22-3/4	578
CH23-31	31	787	26-3/4	679
CH23-41	31	787	26-3/4	679
CH23-51	35	889	30-3/4	781
CH23-65	41	1041	36-3/4	933
CH23-68	47	1194	42-3/4	1086

SPECIFICATIONS

1.5 - 5 TON

General Data		Model No.	CH23-21	CH23-31	CH23-41	CH23-51	CH23-65	CH23-68
Nominal size - tons			1.5	2.5	3	4	5	5+
Line Connections	Suction/Vapor o.d. - in. sweat		² 7/8	² 7/8	³ 7/8	7/8	7/8	7/8
	Liquid o.d. - in. sweat		¹ 3/8	¹ 3/8	3/8	3/8	3/8	3/8
	Condensate drain - in (fpt)		(2) 3/4	(2) 3/4	(2) 3/4	(2) 3/4	(2) 3/4	(2) 3/4
Shipping Data		lbs. - 1 package	30	34	42	46	55	75

¹ 3/8 x 5/16 in. reducing coupling shipped with coil.

² 7/8 x 5/8 in. reducing bushing shipped with coil.

³ 7/8 x 3/4 in. reducing bushing shipped with coil.



NOTE – Due to Lennox’ ongoing commitment to quality, Specifications, Ratings and Dimensions subject to change without notice and without incurring liability. Improper installation, adjustment, alteration, service or maintenance can cause property damage or personal injury. Installation and service must be performed by a qualified installer and servicing agency.



FEATURES

Refrigerant System

- Copper tube construction with enhanced ripple-edged aluminum fins
- Twin coil construction in a “V” configuration for large surface area
- Non-corrosive drain pan with dual fpt drain connections

Refrigerant Control Choice

- All models applicable to Lennox RFCIV refrigerant metering system when matched with specific air conditioners
- Optional expansion valves available

Cabinet

- Pre-painted finish
- Fully insulated cabinet with thick fiberglass insulation

Coil Match-Up

- Coil inlet openings match corresponding Lennox furnace supply air openings with same letter designation in the model number. No adaptor required. See Coil/ Furnace Match-Up Charts in this section for additional information

LIMITED WARRANTY

- All covered components - Five years

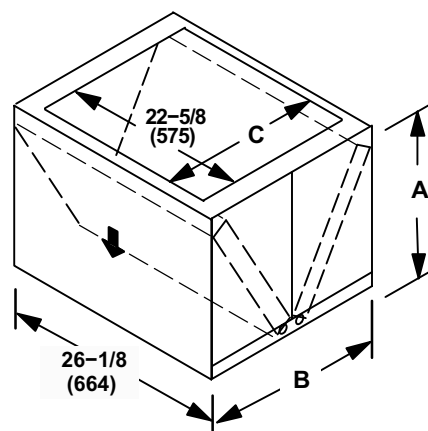
NOTE - Refer to Lennox Equipment Limited Warranty certificate included with equipment for details.

ACCESSORIES

- Expansion Valve Kits



DIMENSIONS



Model No.	A		B		C		Supply Air Opening			
							Width		Depth	
	in.	mm	in.	mm	in.	mm	in.	mm	in.	mm
CR33-18A-F	14-1/8	359	17-1/2	445	13-1/2	343	15-1/2	394	23-3/16	589
CR33-24A-F	14-1/8	359	17-1/2	445	13-1/2	343	15-1/2	394	23-3/16	589
CR33-24B-F	14-1/8	359	17-1/2	445	16-1/2	419	15-1/2	394	23-3/16	589
CR33-30/36A-F	16-1/8	410	17-1/2	445	13-1/2	343	15-1/2	394	23-3/16	589
CR33-30/36B-F	16-1/8	410	17-1/2	445	16-1/2	419	15-1/2	394	23-3/16	589
CR33-30/36C-F	16-1/8	410	21	533	20	508	19	483	23-3/16	589
CR33-48B-F	20	508	21	533	16-1/2	419	19	483	23-3/16	589
CR33-48C-F	20	508	21	533	20	508	19	483	23-3/16	589
CR33-50/60C-F	23-5/8	600	24-1/2	622	20	508	22-1/2	572	23-3/16	589
CR33-60D-F	23-5/8	600	24-1/2	622	23-1/2	597	22-1/2	572	23-3/16	589

NOTE - Due to Lennox' ongoing commitment to quality, Specifications, Ratings and Dimensions subject to change without notice and without incurring liability. Improper installation, adjustment, alteration, service or maintenance can cause property damage or personal injury. Installation and service must be performed by a qualified installer and servicing agency.

SPECIFICATIONS		1.5 TO 3 TON				
General Data	Model No.	CR33-18A-F	CR33-24A-F	CR33-24B-F	CR33-30/36A-F	CR33-30/36B-F
	Nominal size - tons	1.5	2	3	2.5/3	2.5/3
Line connections in.	Suction / vapor o.d. - in. sweat	7/8	7/8	7/8	7/8	7/8
	Liquid o.d. in. - sweat	3/8	3/8	3/8	3/8	3/8
	Condensate drain - in. (fpt)	(2) 3/4	(2) 3/4	(2) 3/4	(2) 3/4	(2) 3/4
Shipping weight	lbs. - 1 package	44	44	49	58	57

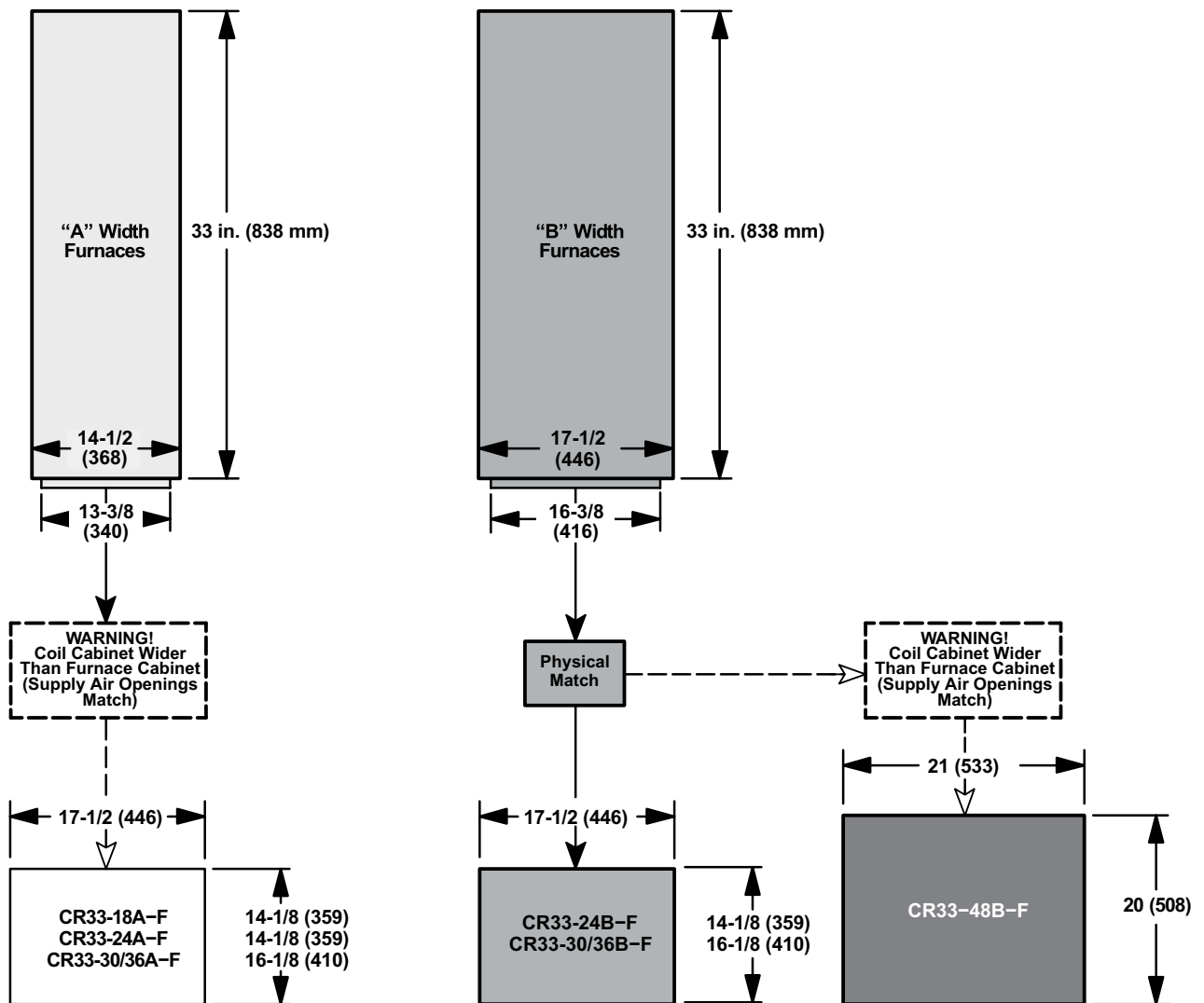
SPECIFICATIONS		2 TO 5 TON				
General Data	Model No.	CR33-30/36C-F	CR33-48B-F	CR33-48C-F	CR33-50/60C-F	CR33-60D-F
	Nominal size - tons	2.5/3	4	4	4/5	5
Line connections in.	Suction / vapor o.d. in. - sweat	7/8	7/8	7/8	7/8	7/8
	Liquid o.d. - in. sweat	3/8	3/8	3/8	3/8	3/8
	Condensate drain - in. (fpt)	(2) 3/4	(2) 3/4	(2) 3/4	(2) 3/4	(2) 3/4
Shipping weight	lbs. - 1 package	60	72	71	85	84



NOTE – Due to Lennox’ ongoing commitment to quality, Specifications, Ratings and Dimensions subject to change without notice and without incurring liability. Improper installation, adjustment, alteration, service or maintenance can cause property damage or personal injury. Installation and service must be performed by a qualified installer and servicing agency.

DOWNFLOW GAS FURNACES - CR33 COILS

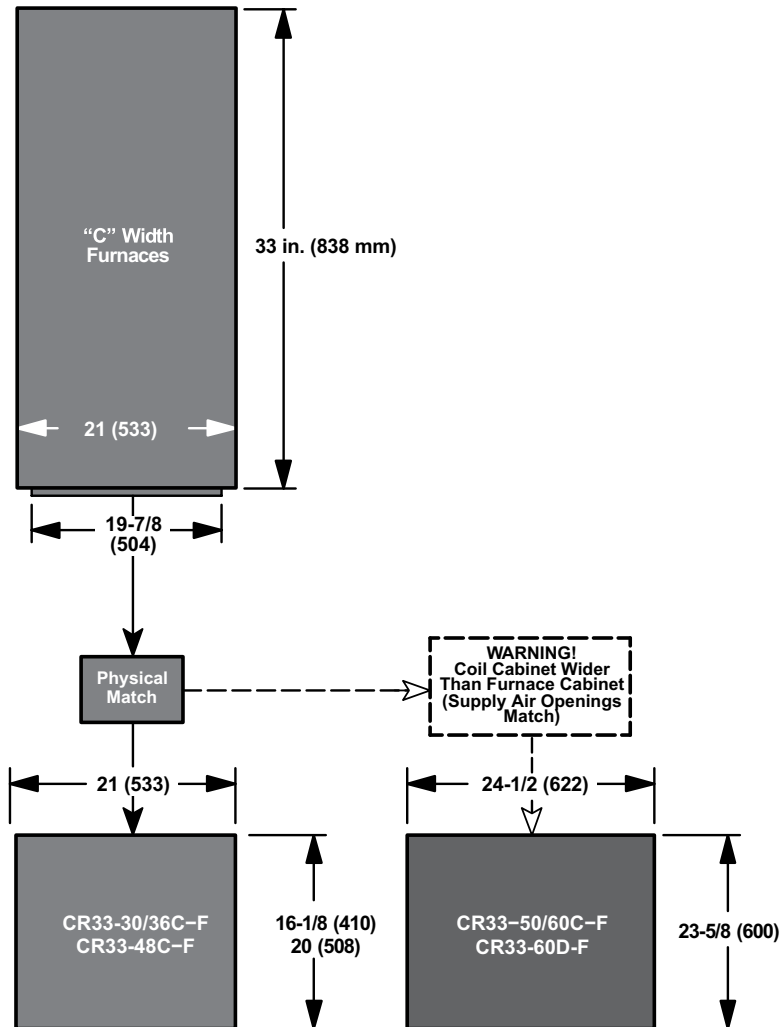
(Note – Coil opening will physically match the furnace supply air opening with the same letter designation in the model number.



NOTE - Due to Lennox' ongoing commitment to quality, Specifications, Ratings and Dimensions subject to change without notice and without incurring liability. Improper installation, adjustment, alteration, service or maintenance can cause property damage or personal injury. Installation and service must be performed by a qualified installer and servicing agency.

DOWNFLOW GAS FURNACES - CR33 COILS

(Note – Coil opening will physically match the furnace supply air opening with the same letter designation in the model number.



NOTE – Due to Lennox' ongoing commitment to quality, Specifications, Ratings and Dimensions subject to change without notice and without incurring liability. Improper installation, adjustment, alteration, service or maintenance can cause property damage or personal injury. Installation and service must be performed by a qualified installer and servicing agency.



AIR HANDLERS CBA25UHV MERIT® SERIES

RESIDENTIAL PRODUCT CATALOG

Upflow / Horizontal - R410A - Programmable Multi-Speed Blower Motor

1.5 to 5 Tons

Optional Electric Heat - 2.5 to 20 kW

Page 1

January 2022

Supersedes June 2021

FEATURES

Refrigerant System

- Quantum™ Coil - Aluminum tubing, hairpins, distributor and header tubes.
- Copper refrigerant sweat connections on both liquid and suction lines for easy brazing.
- Twin coil construction in an "A" configuration
- Anti-microbial dual position drain pans resist growth of mold and mildew.
- Factory installed R-410A Check/Expansion valve



Controls

- BDC3 Electronic Blower Control
- 24 Volt Transformer
- Blower Relay
- Terminal Strip

Blower

- Programmable Multi-Speed Blower Motor

Cabinet

- Upflow / Horizontal Configuration
- Pre-painted finish
- Fully insulated with thick fiberglass insulation
- All models have less than 2% air leakage and meet ANSI/ASHRAE Standard 193-2010
- Tool-less access to disposable, frame-type filter



ACCESSORIES

- See page 6

Cabinet

- Downflow Conversion Kit
- Horizontal Support Frame Kit
- Side Return Unit Stand (Upflow)
- Wall Hanging Bracket Kit (Upflow)

Controls

- iComfort® M30 Smart Wi-Fi Thermostat

Electric Heat

- See page 5
- Electric Heat - 2.5 to 20 kW
- Single-Point Power Source Control Box

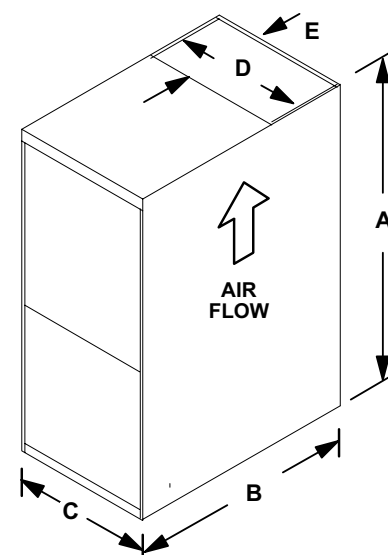
LIMITED WARRANTY

- All covered components - Five Years

NOTE - Refer to Lennox Equipment Limited Warranty certificate included with equipment for details.

DIMENSIONS

		-018	-024	-030	-036 -042	-048	-060
A		43-1/2 (1105)	45-1/2 (1156)	47 (1194)	53-5/8 (1362)	55 (1397)	59-3/4 (1518)
	B	22 (559)	22 (559)	22 (559)	22 (559)	22 (559)	22 (559)
	C	18-1/2 (470)	18-1/2 (470)	18-1/2 (470)	21-1/2 (546)	21-1/2 (546)	21-1/2 (546)
	D	16-1/2 (419)	16-1/2 (419)	16-1/2 (419)	19-1/2 (495)	19-1/2 (495)	19-1/2 (495)
	E	14-1/2 (368)	14-1/2 (368)	14-1/2 (368)	14-1/2 (368)	14-1/2 (368)	14-1/2 (368)
Return Air	Width	16-1/4 (413)	16-1/4 (413)	16-1/4 (413)	19-1/4 (495)	19-1/4 (495)	19-1/4 (495)
	Depth	20-3/8 (518)	20-3/8 (518)	20-3/8 (518)	20-3/8 (518)	20-3/8 (518)	20-3/8 (518)



NOTE - Due to Lennox' ongoing commitment to quality, Specifications, Ratings and Dimensions subject to change without notice and without incurring liability. Improper installation, adjustment, alteration, service or maintenance can cause property damage or personal injury. Installation and service must be performed by a qualified installer and servicing agency.

SPECIFICATIONS

General Data		Model Number	CBA25UHV-018	CBA25UHV-024	CBA25UHV-030	CBA25UHV-036
	Nominal tonnage		1.5	2	2.5	3
	Factory Installed Expansion Valve		12J18	12J18	12J18	12J19
Connections	Suction/Vapor line (o.d.)-in. sweat		3/4	3/4	3/4	7/8
	Liquid line (o.d.)-in. sweat		3/8	3/8	3/8	3/8
	Condensate-in. fpt		(2) 3/4	(2) 3/4	(2) 3/4	(2) 3/4
Blower	Wheel nominal diameter x width-in.		9 x 6	9 x 6	10 x 8	10 x 8
	Blower motor output-hp		1/2	1/2	1/2	1/2
¹ Filters	Size of filter-in.		15 x 20 x 1	15 x 20 x 1	15 x 20 x 1	18 x 20 x 1
Shipping Data -1 package-lbs.			129	136	143	169

ELECTRICAL DATA

	Voltage-1 phase (60 hz)		208/240V	208/240V	208/240V	208/240V
	² Maximum overcurrent protection (unit only)		15	15	15	15
	³ Minimum circuit ampacity (unit only)		4.9	4.9	4.9	4.9
	Blower Motor Full Load Amps		3.9	3.9	3.9	3.9

SPECIFICATIONS

General Data		Model Number	CBA25UHV-042	CBA25UHV-048	CBA25UHV-060
	Nominal tonnage		3.5	4	5
	Factory Installed Expansion Valve		12J20	12J20	12J20
Connections	Suction/Vapor line (o.d.)-in. sweat		7/8	7/8	7/8
	Liquid line (o.d.)-in. sweat		3/8	3/8	3/8
	Condensate-in. fpt		(2) 3/4	(2) 3/4	(2) 3/4
Blower	Wheel nominal diameter x width-in.		10 x 8	12 x 10	12 x 10
	Blower motor output-hp		3/4	1	1
¹ Filters	Size of filter-in.		18 x 20 x 1	18 x 20 x 1	18 x 20 x 1
Shipping Data -1 package-lbs.			169	179	190

ELECTRICAL DATA

	Voltage-1 phase (60 hz)		208/240V	208/240V	208/240V
	² Maximum overcurrent protection (unit only)		15	15	15
	³ Minimum circuit ampacity (unit only)		6.5	8.6	8.6
	Blower Motor Full Load Amps		5.2	6.9	6.9

¹ Disposable filter.² HACR type circuit breaker or fuse.³ Refer to National or Canadian Electrical Code manual to determine wire, fuse and disconnect size requirements. Use wires suitable for at least 167°F.

NOTE - Due to Lennox' ongoing commitment to quality, Specifications, Ratings and Dimensions subject to change without notice and without incurring liability. Improper installation, adjustment, alteration, service or maintenance can cause property damage or personal injury. Installation and service must be performed by a qualified installer and servicing agency.




AIR HANDLERS CBA25UH MERIT® SERIES

RESIDENTIAL PRODUCT CATALOG

Upflow / Horizontal - R410A
1.5 to 5 Tons
Optional Electric Heat - 2.5 to 20 kW
Page 3
January 2022
Supersedes June 2021

FEATURES

Refrigerant System

- Quantum™ Coil - Aluminum tubing, hairpins, distributor and header tubes
- Copper refrigerant sweat connections on both liquid and suction lines for easy brazing
- Twin coil construction in an "A" configuration
- Anti-microbial dual position drain pans resist growth of mold and mildew 
- Factory installed R-410A Check/Expansion valve

Controls

- 24 Volt Transformer
- Blower Cooling Relay
- Terminal Strip

Blower

- Multi-Speed, Direct-Drive Blower

Cabinet

- Upflow / Horizontal Configuration (downflow with optional kit)
- Pre-painted finish
- Fully insulated with thick fiberglass insulation
- All models have less than 2% air leakage and meet ANSI/ASHRAE Standard 193-2010
- Tool-less access to disposable, frame-type filter



ACCESSORIES

- See page 5
- Cabinet**
 - Downflow Conversion Kit
 - Horizontal Support Frame Kit
 - Side Return Unit Stand (Upflow)
 - Wall Hanging Bracket Kit (Upflow)
- Controls**
 - iComfort® M30 Smart Wi-Fi Thermostat
- Electric Heat**
 - See page 5
 - Electric Heat - 2.5 to 20 kW
 - Single-Point Power Source Control Box

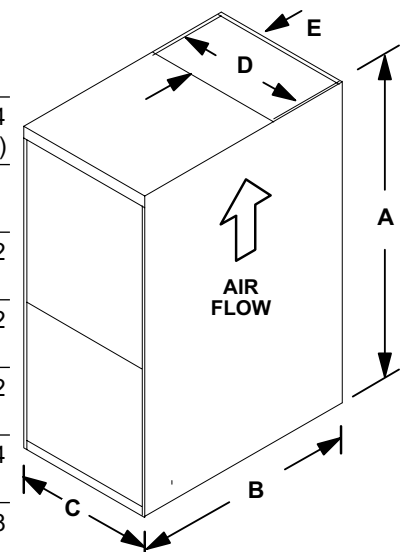
LIMITED WARRANTY

- All covered components - Five Years

NOTE - Refer to Lennox Equipment Limited Warranty certificate included with equipment for details.

DIMENSIONS

		-018	-024	-030	-036 -042	-048	-060
A		43-1/2 (1105)	45-1/2 (1156)	47 (1194)	53-5/8 (1362)	55 (1397)	59-3/4 (1518)
B		22 (559)	22 (559)	22 (559)	22 (559)	22 (559)	22 (559)
C		18-1/2 (470)	18-1/2 (470)	18-1/2 (470)	21-1/2 (546)	21-1/2 (546)	21-1/2 (546)
D		16-1/2 (419)	16-1/2 (419)	16-1/2 (419)	19-1/2 (495)	19-1/2 (495)	19-1/2 (495)
E		14-1/2 (368)	14-1/2 (368)	14-1/2 (368)	14-1/2 (368)	14-1/2 (368)	14-1/2 (368)
Return Air	Width	16-1/4 (413)	16-1/4 (413)	16-1/4 (413)	19-1/4 (495)	19-1/4 (495)	19-1/4 (495)
	Depth	20-3/8 (518)	20-3/8 (518)	20-3/8 (518)	20-3/8 (518)	20-3/8 (518)	20-3/8 (518)



NOTE - Due to Lennox' ongoing commitment to quality, Specifications, Ratings and Dimensions subject to change without notice and without incurring liability. Improper installation, adjustment, alteration, service or maintenance can cause property damage or personal injury. Installation and service must be performed by a qualified installer and servicing agency.

SPECIFICATIONS

General Data		Model Number	CBA25UH-018	CBA25UH-024	CBA25UH-030	CBA25UH-036
		Nominal tonnage	1.5	2	2.5	3
Connections	Suction/Vapor line (o.d.) - in. sweat		3/4	3/4	3/4	7/8
	Liquid line (o.d.) - in. sweat		3/8	3/8	3/8	3/8
	Condensate - in. fpt		(2) 3/4	(2) 3/4	(2) 3/4	(2) 3/4
Blower	Wheel nominal diameter x width - in.		9 x 6	9 x 6	10 x 8	10 x 8
	Blower motor output - hp		1/5	1/3	1/2	1/3
¹ Filters	Size of filter - in.		15 x 20 x 1	15 x 20 x 1	15 x 20 x 1	18 x 20 x 1
Shipping Data -1 package - lbs.			129	136	143	169

ELECTRICAL DATA

		Voltage - 1 phase (60 hz)	208/240V	208/240V	208/240V	208/240V
		² Maximum overcurrent protection (unit only)	15	15	15	15
		³ Minimum circuit ampacity (unit only)	5.0	5.0	5.0	5.0
		Blower Motor Full Load Amps	1.1	1.6	1.6	2.0

SPECIFICATIONS

General Data		Model Number	CBA25UH-042	CBA25UH-048	CBA25UH-060
		Nominal tonnage	3.5	4	5
Connections	Suction/Vapor line (o.d.) - in. sweat		7/8	7/8	7/8
	Liquid line (o.d.) - in. sweat		3/8	3/8	3/8
	Condensate - in. fpt		(2) 3/4	(2) 3/4	(2) 3/4
Blower	Wheel nominal diameter x width - in.		10 x 8	12 x 10	12 x 10
	Blower motor output - hp		1/2	1	1
¹ Filters	Size of filter - in.		18 x 20 x 1	18 x 20 x 1	18 x 20 x 1
Shipping Data -1 package - lbs.			169	179	190

ELECTRICAL DATA

		Voltage - 1 phase (60 hz)	208/240V	208/240V	208/240V
		² Maximum overcurrent protection (unit only)	15	15	15
		³ Minimum circuit ampacity (unit only)	5.0	9.5	9.5
		Blower Motor Full Load Amps	2.5	7.6	7.6

¹ Disposable filter.² HACR type circuit breaker or fuse.³ Refer to National or Canadian Electrical Code manual to determine wire, fuse and disconnect size requirements. Use wires suitable for at least 167°F.



CBA25UH / CBA25UHV OPTIONAL ELECTRIC HEAT - ORDER SEPARATELY

			CBA25UH / CBA25UHV						
			-018	-024	-030	-036	-042	-048	-060
208/240V-1ph - Terminal Block Models									
4 kW	ECBA25-4	19V31	•	•	•	•	•	•	•
5 kW	ECBA25-5	16Y36	•	•	•	•	•	•	•
7.5 kW	ECBA25-7.5	16Y37	•	•	•	•	•	•	•
10 kW	ECBA25-10	16Y38	•	•	•	•	•	•	•
208/240V-1ph - Circuit Breaker Models									
4 kW	ECBA25-4CB	19V32	•	•	•	•	•	•	•
5 kW	ECBA25-5CB	16Y39	•	•	•	•	•	•	•
7.5 kW	ECBA25-7.5CB	16Y41	•	•	•	•	•	•	•
10 kW	ECBA25-10CB	16Y42	•	•	•	•	•	•	•
12.5 kW	ECBA25-12.5CB	16Y43			•	•	•	•	•
15 kW	ECBA25-15CB	16Y44			•	•	•	•	•
20 kW	ECBA25-20CB	16Y46					•	•	•

NOTE - Due to Lennox' ongoing commitment to quality, Specifications, Ratings and Dimensions subject to change without notice and without incurring liability. Improper installation, adjustment, alteration, service or maintenance can cause property damage or personal injury. Installation and service must be performed by a qualified installer and servicing agency.



OPTIONAL ACCESSORIES

	Model	CBA25UHV							CBA25UH						
		-018	-024	-030	-036	-042	-048	-060	-018	-024	-030	-036	-042	-048	-060
Downflow Conversion Kit	Y9658	•	•	•					•	•	•				
	Y9659				•	•	•	•				•	•	•	•
Horizontal Support Frame Kit	56J18	•	•	•	•	•	•	•	•	•	•	•	•	•	•
Side Return Unit Stand (Upflow Only)	45K32	•	•	•	•	•	•	•	•	•	•	•	•	•	•
Single Point Power Source Control Box (2 or 3 circuits)	21H39	•	•	•	•	•	•	•	•	•	•	•	•	•	•
Wall Hanging Bracket Kit (Upflow Only)	45K30	•	•	•	•	•	•	•	•	•	•	•	•	•	•



**RESIDENTIAL
PRODUCT CATALOG**

MERV 11, MERV 13 Media Air Cleaner

Page 1
January 2022
Supersedes June 2021

FEATURES

NOTE - Cabinet and Filter must be ordered separately.

- MERV 11 and MERV 13 filter (Minimum Efficiency Reporting Value based on ASHRAE 52.2)
- High performance filtration with a narrow 7 in. cabinet
- Pleated filter design allows maximum air flow and filtration efficiency
- Multi-position cabinet is available for installation on the return air opening of gas, oil or electric forced, warm air furnaces and air handlers with cooling applications up to 5 tons
- The unit can be installed in upflow, downflow or horizontal unit applications
- Silent operation, requires no electrical component service, and generates no ozone
- Constant blower operation will achieve the best air cleaning results
- No duct transition needed for most furnace applications
- Cabinet constructed of pre-painted galvanized steel
- Cabinet will withstand 400 lbs. static weight, enough to support the weight of a typical furnace and indoor coil or air handler
- Tool-less access door allows quick and easy replacement of filter media
- Mounts in any position
- Air flow direction through the cabinet can be changed by repositioning the filter
- Arrows on filter indicate air flow direction
- Cabinet is shipped compact and requires minimum field assembly
- No tools required
- Filter media is certified to UL 900 standard and UL/ULC classification - Class 2.



HCC Filter Cabinet
(With Filter in Place)

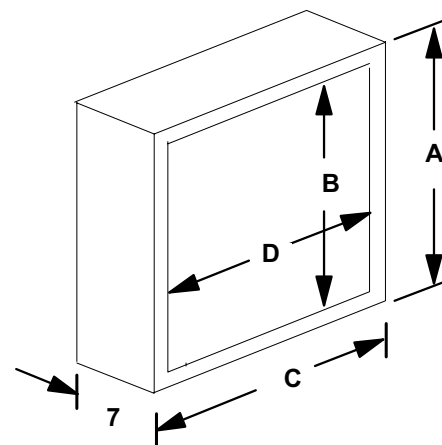


- Two Filter Types are available:
 - **Boxed Filters** have double-wall beverage board frame for rigid construction
 - **Expandable Filter Kits** consist of expandable filter media and reusable filter frame
 - Expandable Filter Kits are shipped compact for field assembly

LIMITED WARRANTY

- Cabinet has a five year limited warranty in residential applications, one year in non-residential applications.
- Filter media is not covered.
- Refer to Healthy Climate Equipment Limited Warranty certificate included with cabinet for specific details.

DIMENSIONS



	HCC14-23	HCC16-28	HCC20-28
A	21-1/4	17-1/4	21
B	18-3/4	15	18-1/2
C	23	28-1/2	28-1/2
D	18-1/2	24	24

SPECIFICATIONS			MERV 11 MERV 13					
General Data	Cabinet Model No.	HCC14-23	HCC16-28	HCC20-28	HCC14-23	HCC16-28	HCC20-28	
	Filter Model No. (Box Filter)	HCF14-11	HCF16-11	HCF20-11	HCF14-13	HCF16-13	HCF20-13	
	Filter Model No. (Expandable Filter Kit)	HCXF14-11	HCXF16-11	HCXF20-11	---	---	---	
¹ MERV (Minimum Efficiency Reporting Value) rating		11	11	11	13	13	13	
Air Flow	Air flow range - cfm	800 - 1400	800 - 1600	1400 - 2000	800 - 1400	800 - 1600	1400 - 2000	
	Rated air flow - cfm	1400	1600	2000	1400	1600	2000	
Filter Data	Nominal Filter size - in.	20 x 20 x 5	16 x 25 x 5	20 x 25 x 5	20 x 20 x 5	16 x 25 x 5	20 x 25 x 5	
	Actual Filter size - in.	20 x 19-3/4 x 4-3/8	15-3/4 x 24-3/4 x 4-3/8	19-3/4 x 24-3/4 x 4-3/8	20 x 19-3/4 x 4-3/8	15-3/4 x 24-3/4 x 4-3/8	19-3/4 x 24-3/4 x 4-3/8	
	Pressure drop @ rated flow in. w.c. - Initial	HCF - Initial	0.25	0.27	0.27	0.21	0.26	0.26
		- Final	0.40	0.40	0.40	0.40	0.40	0.40
	HCXF - Initial	- Final	0.27	0.30	0.27	---	---	---
- Final		0.40	0.40	0.40	---	---	---	
² Filter estimated service life (months)		up to 12 months						
Shipping weight - lbs.	Cabinet	15	17	18	15	17	18	
MAINTENANCE SUPPLIES - ORDER SEPARATELY								
Replacement filter media for Expandable Filter Kits		X8311	X8309	X8310	19L14	19L15	19L17	
Replacement filter media for Box Filter Kits		X0585	X6670	X6673	---	---	---	





FEATURES

- The iComfort® M30 is a Wi-Fi enabled, electronic 7-day, universal, multi-stage, programmable, touchscreen thermostat
- It also offers enhanced capabilities including control for humidification / dehumidification / dewpoint measurement and control, Humiditrol® Enhanced Dehumidification Accessory, and equipment maintenance reminders
- Easy to read 4.3 in. color screen (measured diagonally)
- LCD display with backlight shows the current and set temperature, time, inside relative humidity, system status (operating mode and schedules) and outside temperature (optional outdoor sensor required)
- Touchscreen interaction
- Ergonomic design
- Smooth Setback Recovery starts system early to achieve setpoint at start of program period
- Compressor short-cycle protection (5 minutes)
- Real-time clock keeps time during power failures and automatically updates to daylight savings
- Maintenance reminders let user know when to service or replace filters, PureAir® metal insert, humidifier pads, ultraviolet lamps, plus one user or installer defined custom reminder



- Up to four separate schedules are available plus Schedule IQ™
- One-Touch Away Mode - A quick and easy way to set the cooling and heating setpoints while away
- Smart Away™ - Uses geo-fencing technology to determine when the homeowner is within a predetermined distance from the home to operate the system when leaving, away and arriving
- Permanent memory storage of programs
- Wallplate furnished

LIMITED WARRANTY

- Five-year limited warranty in residential applications
- NOTE** - Refer to Lennox Equipment Limited Warranty certificate included with unit for specific details.

REMOTE MONITORING

- Wi-Fi remote monitoring and adjustment through a home wireless network for desktop PCs, laptops and apps for smartphones or tablets
- Service alerts and reminders
- Free iComfort® Thermostat App is available for use on iPhone®, iPad®, and Android™ devices



Home Automation

- Smart home automation compatible with Amazon Alexa®, Google Assistant and IFTTT



CONTROL ORDERING INFORMATION

Description	Catalog No.
iComfort® M30 Thermostat - Dimensions (H x W x D) - 3-5/16 x 4-5/16 x 7/8 in. Wallplate Dimensions (W x H) - 5-3/4 x 4-1/2 in.	15X69
¹ Optional Outdoor Air Temperature Sensor	X2658

¹ Allows the thermostat to display outdoor temperature.
Sensor is required for dual fuel operation if thermostat controls dual-fuel system operation. Also required with Humiditrol® applications and Humidity Settings / Humidity / Dewpoint operation..



CONTROLS

ComfortSense® 5500

1 Heat / 1 Cool (Conventional Cooling Only)

RESIDENTIAL PRODUCT CATALOG

Touchscreen 7-Day Programmable Thermostats

Page 2

January 2022

Supersedes June 2021

FEATURES

- Electronic 7-day, single-stage, programmable, touchscreen thermostat with maintenance reminders
- LCD display with backlight shows the current and set temperature, time and system status (operating mode and schedules)
- Menu-driven programming guides user through the scheduling process showing only necessary information on each screen
- Touchscreen interaction
- Ergonomic design
- Smooth Setback Recovery starts system early to achieve setpoint at start of program period
- Compressor short-cycle protection (5 minutes, adjustable)
- Real-time clock keeps time during power failures and automatically updates to daylight savings
- Maintenance reminders let user know when to service or replace filters, PureAir® metal insert, humidifier pads, ultraviolet lamps, plus two user or installer defined custom reminders
- Up to three separate schedules for individual days of the week, week/weekend (5/2 day) or all 7-days the same with up to 4 time periods per day
- Temporarily override the program schedule as desired by time



ComfortSense®

- Programmable fan offers increased air quality when combined with a whole house air indoor air quality product
- Permanent memory storage of programs
- Wallplate furnished
- Temperature Setting Range: Heating, 45 to 90°F, Cooling, 45 to 99°F
- Power Supply: 24VAC (18 to 30VAC maximum), 50/60Hz
- Dimensions (H x W x D) - 3-5/16 x 4-5/16 x 7/8 in. (84 x 110 x 22 mm)

LIMITED WARRANTY

- Five-year in residential applications
- NOTE** - Refer to Lennox Equipment Limited Warranty certificate included with unit for specific details.

ORDERING INFORMATION

- **13H13** - 1 heat / 1 cool control for use with conventional residential heating/cooling (non-heat pump) systems only.
- Terminals: C, G, W1, Y1, R



RESIDENTIAL PRODUCT CATALOG

CONTROLS ComfortSense® 3000 L3511C, L3522C, L3532H

5-2 Day Programmable Thermostats

Page 3

January 2022

Supersedes June 2021

FEATURES

- Large, back-lit, easy-to-read LCD screen
- Digital display offers more accurate control of temperature settings than mechanical controls
- Large buttons are easy to push
- Sleek, modern appearance works well with any decor
- System status icons show when the HVAC system is running
- Filter monitor displays when it is time to service the HVAC system filter
- Service monitor indicates when the cooling system is not operating properly
- Gradually changes room temperature to next program period for increased comfort
- Hard-wired to the indoor unit power supply
- No batteries to change
- Heat pump model can be used in dual-fuel applications or applications with auxiliary heat lockout

NOTE - Requires optional outdoor temperature sensor.

- Five-minute compressor short-cycle protection
- Minimum cycle time of 6 minutes
- 5-2 day programming, four time periods per day
- Day/Time button allows quick clock setting changes
- Heat/Cool buttons simplify setting precise heating and cooling temperatures
- Fan button selects continuous or automatic blower operation
- Programming button sets, reviews, or changes schedule
- Hold features will permanently hold setpoints without changing the program



- Maintains program in memory for 24-hours in the event of a power outage
- Day and time display will show current day and time
- Program/Hold indicators show the current program and the program override (hold) status
- Compressor stage indicators show if the first or second stage of the compressor is activated (if applicable)
- Filter reminder will be displayed when the filter reminder timer expires
- Room - shows the current room temperature
- Setpoint - shows the set point temperature
- System selector indicators - shows the current selection of system control; COOL, OFF, HEAT, and EMG. HEAT (heat pump usage only)
- If heating is activated, the system status will show a flame animation
- If cooling is activated, the system status will show a snowflake animation
- Fan selection indicator shows the current selection of fan control which can be ON or AUTO
- If the fan is activated, the fan status indicator will show a rotating fan animation
- The service indicator will show a 1HZ blinking indicator when 24VAC is present at the L terminal and Y1 is on for five minutes

- LCD backlight turns on for 30 seconds when any key is pressed
- Outdoor Sensor (optional for heat pump usage) is used to control balance points on multi-stage heat pumps

LIMITED WARRANTY

- Two year in residential applications

NOTE - Refer to Lennox Equipment Limited Warranty certificate included with unit for specific details.

ORDERING INFORMATION

- **L3511C (51M34)** - 1 Heat/1 Cool - Conventional Heat/cool
Terminals: R, C, Y1, W1, G, L
- **L3522C (51M35)** - 2 Heat/2 Cool - Conventional Heat/cool
Terminals: R, C, Y1, Y2, W1, W2, G, L
- **L3532H (51M37)** - 3 Heat/2 Cool - Universal Heat/Cool or Heat Pump Systems
Terminals: R, C, Y1, Y2, W1, E, O, B, G, L, T, T

ACCESSORIES

- **X2658** - Outdoor Temperature Sensor (For heat pump model only)
- Provides balance point control for multi-stage heat pumps
- Sensor uses 22AWG thermostat wire up to 150 ft. long
- **X2659** - Wall Plate



CONTROLS

ComfortSense® 3000

L3011C, L3021H

RESIDENTIAL PRODUCT CATALOG

FEATURES

- Large, back-lit, easy-to-read LCD screen
- Digital display offers more accurate control of temperature settings than mechanical controls
- Large push buttons
- Sleek, modern appearance works well with any decor
- System status icons show when the HVAC system is running
- Continuous or automatic fan/blower operation
- Filter monitor displays when it is time to service the HVAC system filter
- Service monitor indicates when the system compressor is not operating properly
- Hard-wired to the indoor unit power supply
- No batteries to change
- Heat pump model can be used in dual-fuel applications or applications with auxiliary heat lockout. Requires optional outdoor temperature sensor
- Equipped with overheat protection in heating mode, a bimetal switch will open Y1, W1 and E if room temperature exceeds 93°F
- Screw terminals on removable sub-base
- Five-minute compressor short-cycle protection
- Minimum run time:
 - Gas or Electric Heat - 3 minutes
 - Heat Pump Heating - 4 minutes
 - Cooling - 4 minutes
- LCD backlight turns on for 8 seconds when any key is pressed
- Room - shows the current room temperature



- Setpoint - shows the set point temperature
- System selector indicators - shows the current selection of system control; COOL, OFF, HEAT, and EMG. HEAT (heat pump model only)
- If heating is activated, the system status will show a flame icon
- If cooling is activated, the system status will show a snowflake icon
- Fan selection indicator shows the current selection of fan control which can be ON or AUTO
- If the fan is activated, the fan status will show a rotating fan icon
- The service status will show a 1HZ blinking indicator when 24VAC or 0VAC is present at the L terminal and Y1 has been activated for at least five minutes
- Temperature set range: 50°F to 90°F
- Room temperature display range: 35°F to 99°F
- Room temperature display: User selectable Fahrenheit or Celsius
- Fan control: On/Auto
- User selectable filter reminder: Off, 1, 3, 6, or 12 months
- Power Supply: 18-30 VAC - 60hz
- Memory and filter counters maintained for 24 hours of power outage
- Dimensions: 4-7/8 x 3-1/2 x 1-5/16 in. (125 x 90 x 33)

Non-Programmable Thermostats

Page 4

January 2022

Supersedes June 2021

LIMITED WARRANTY

- Two-years in residential applications.
- NOTE** - Refer to Lennox Equipment Limited Warranty certificate included with unit for specific details.

ORDERING INFORMATION

- **L3011C (51M32)** - 1 Heat/1 Cool - Single stage gas/electric
- Terminals: R, C, Y1, W1, G, L
- **L3021H (51M33)** - 2 Heat/1 Cool - Heat pump systems
- Terminals: R, C, Y1, W1, E, O, B, G, L, T, T

ACCESSORIES

- **X2658** - Outdoor Temperature Sensor (For heat pump model only)
- Provides balance point control for multi-stage heat pumps
- Sensor uses 22AWG thermostat wire up to 150 ft. long
- **X2659** - Wall Plate

REVISIONS

Sections	Description of Change
Gas Units	• Added Furnace Twinning Panel Y3653 for Constant Torque "E" furnaces (January 2022)