

TECHNICAL BULLETIN

SUNFIX PLUS FIRE SYSTEM RATING

November 23, 2014 | Issue: 1029 Rev. A



Sunfix plus System Fire Class Rating

Effective June 26th, SolarWorld's Sunfix plus mounting system, including the Sunskirt™ accessory, has been certified as a Class A mounting system when used with Type 1 or Type 3 modules. Class A is the highest fire rating and can be used where Class A, B or C are required for a roof or PV system.

System Tests

The Sunfix plus mounting system was subjected to spread of flame tests and burning brand tests above and beyond the fire tests required for module typing (please see Technical Bulletin 1027 for additional information on module typing). Testing was done on both steep-sloped and low-sloped roofs as defined in UL1703.

Testing Criteria

For Class A testing, the most stringent, the Sunfix plus mounting system was attached to both low sloped and steep sloped test roofs built to Class A standards, using Class A rated materials. All tests were passed twice for each roof and module type.

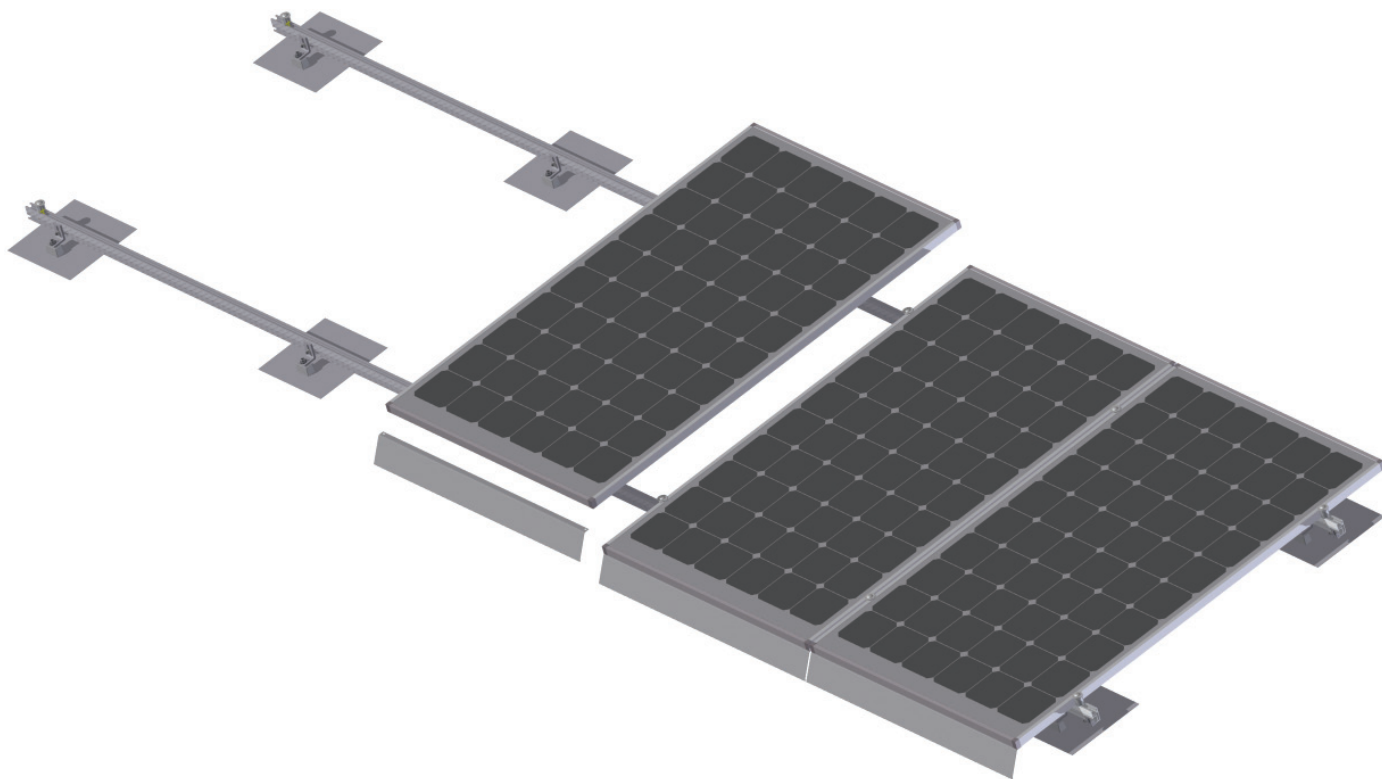
CLASS A REQUIREMENT	TEST RESULTS
Spread of Flame: On Module Surface	Pass
Spread of Flame: Over Roof and Module – Steep Slope Roof	Pass
Spread of Flame: Over Roof and Module – Low Slope Roof	Pass
Type 'A' Burning Brand: On Module Surface – Steep Slope and Low Slope	Pass
Type 'B' Burning Brand: Between Module and Roof – Steep Slope	Pass
No Flying Embers Off the Module or Test Deck	Pass
No Flame or Ember Penetration to the Underside of Roof Deck	Pass

Results

SolarWorld's Sunfix plus mounting system can be used without exclusion where Class A, B or C fire rated PV systems are required by code.

Fire Rating Test:





PORTRAIT

No.	Description	No.	Description
EC1193	Sunfix plus Sunskirt Port Blk	EC1195	Sunfix plus Sunskirt Land Blk
EC1194	Sunfix plus Sunskirt Port Clr	EC1196	Sunfix plus Sunskirt Land Clr
EC1200	HDW for Sunskirt in Portrait	EC1204	Bur WEEB Bond Wash SST
EC1151	1/4" Ext Tooth Lock Washer	SH0001	T-head Bolt M8x20 A2
		EC0496	Nut Hex M8 SERR Flange A2

References:

UL1703
 SolarWorld Technical Bulletin 1027 – SolarWorld Module Types
 California State Fire Marshal Information Bulletin – 14-002 Addendum
 California Code of Regulations (CCR) Title 24, Part 2
 Part 2.5 of the California Residential Code
 IBC Code 2012