

Lennox iComfort S30/E30 Trainer

Installation, Setup and Operation instructions

Table of Contents

System Requirements	1
Installation Instructions	1
Setup Instructions	7
iComfort S30 Trainer Setup.....	7
iComfort E30 Trainer Setup	8
Operation Instructions.....	9

System Requirements

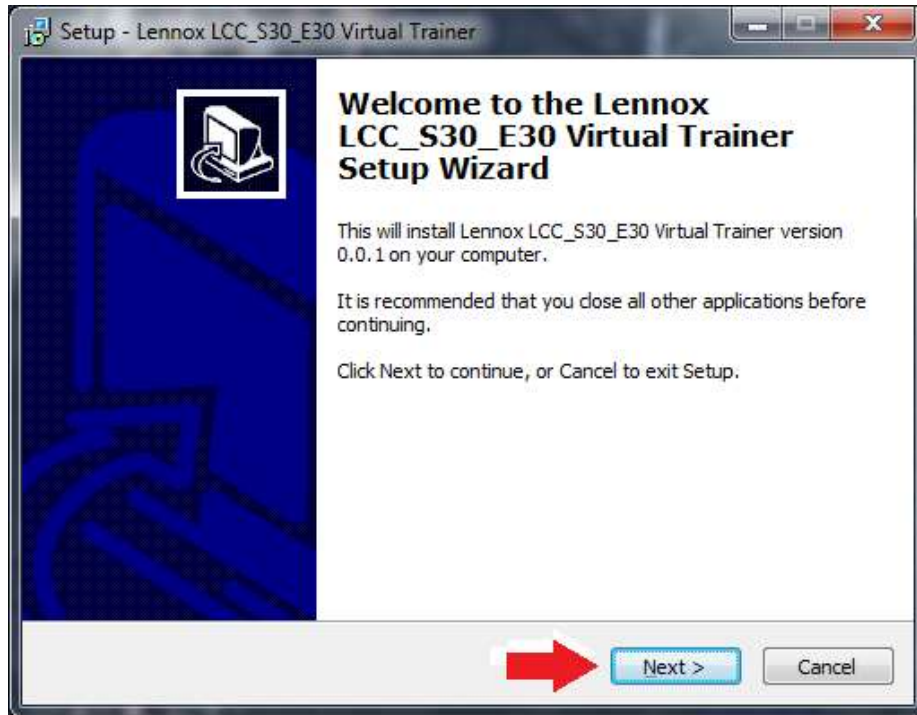
1. Window7, Windows 8.1, Windows10
2. 8GB RAM
3. 256GB HDD
4. Sufficient Screen Resolution
5. Ability to run MEMu

Installation Instructions

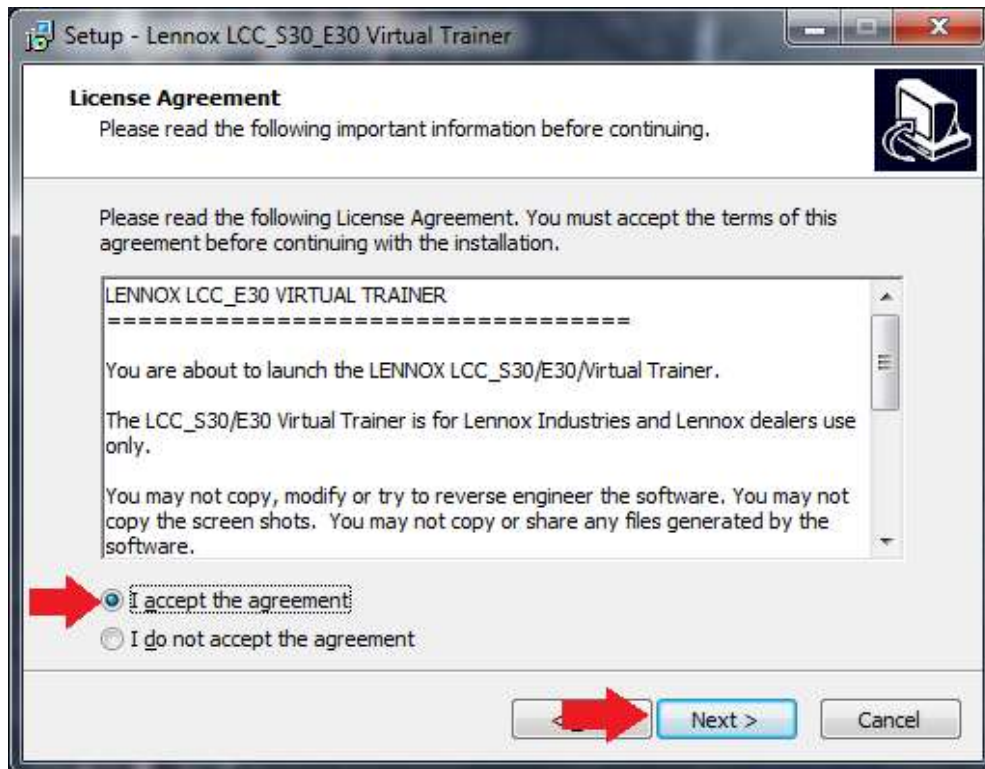
1. Download the file *Lennox LCC_S30_E30 Virtual Trainer Setup.exe* from [here](#) and save it on your computer.
2. From the saved file location, double-click the *Lennox LCC_S30_E30 Virtual Trainer Setup.exe* icon:



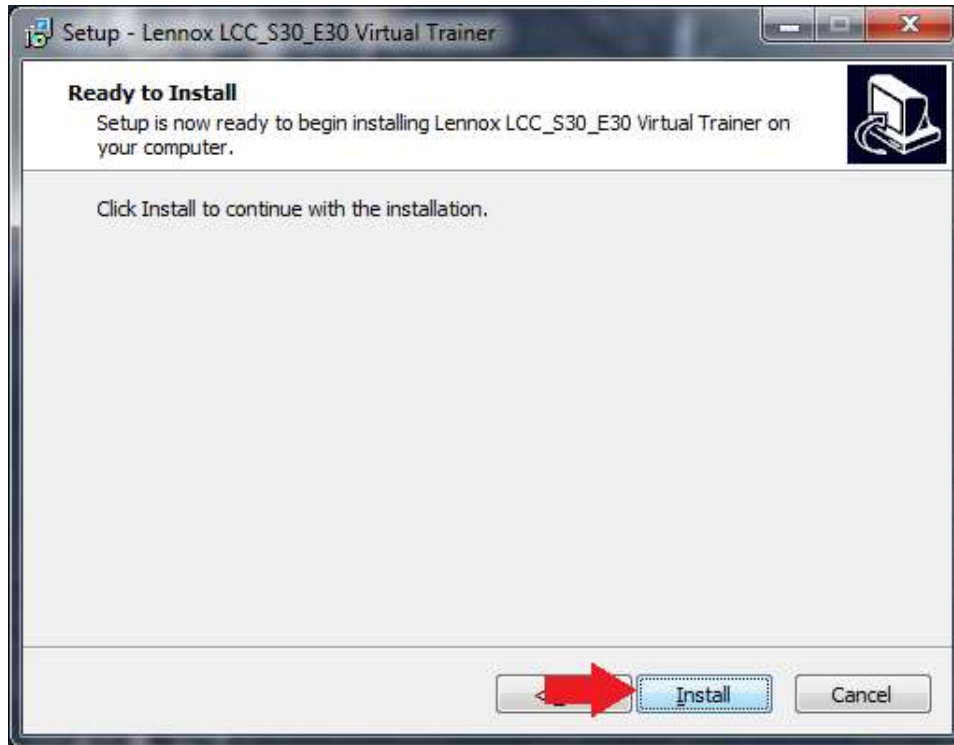
3. The Setup Wizard will open, click the *Next >* button to continue.



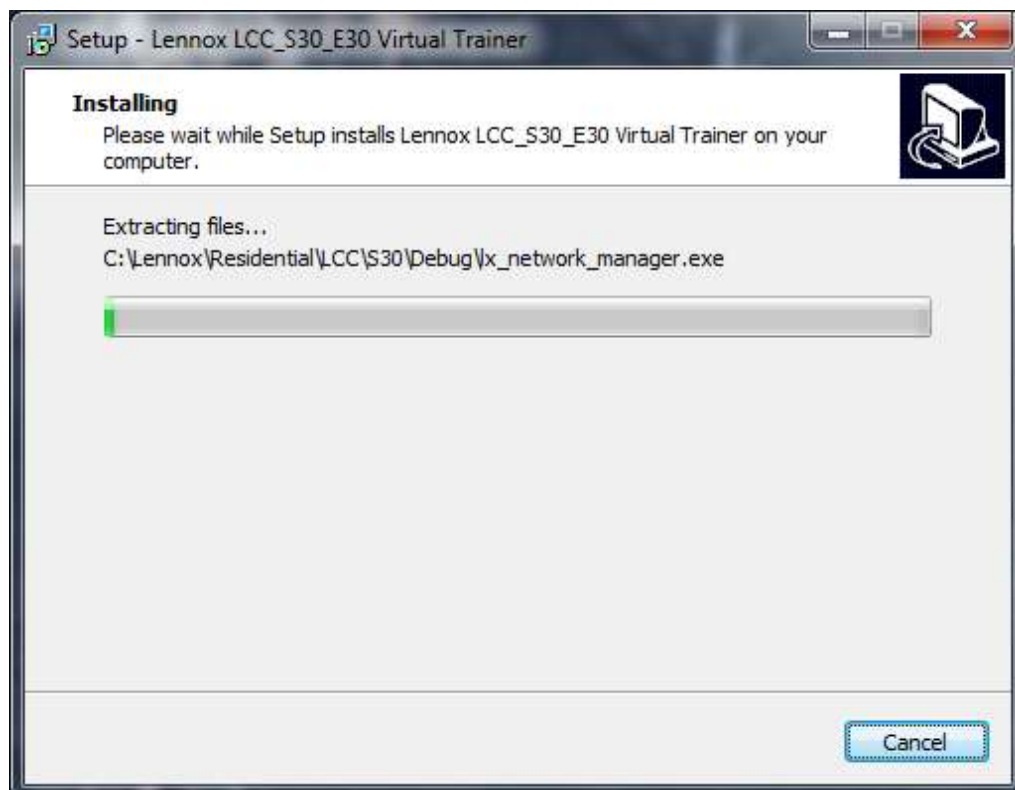
4. Review and accept the License Agreement and then click the *Next >* button to continue.



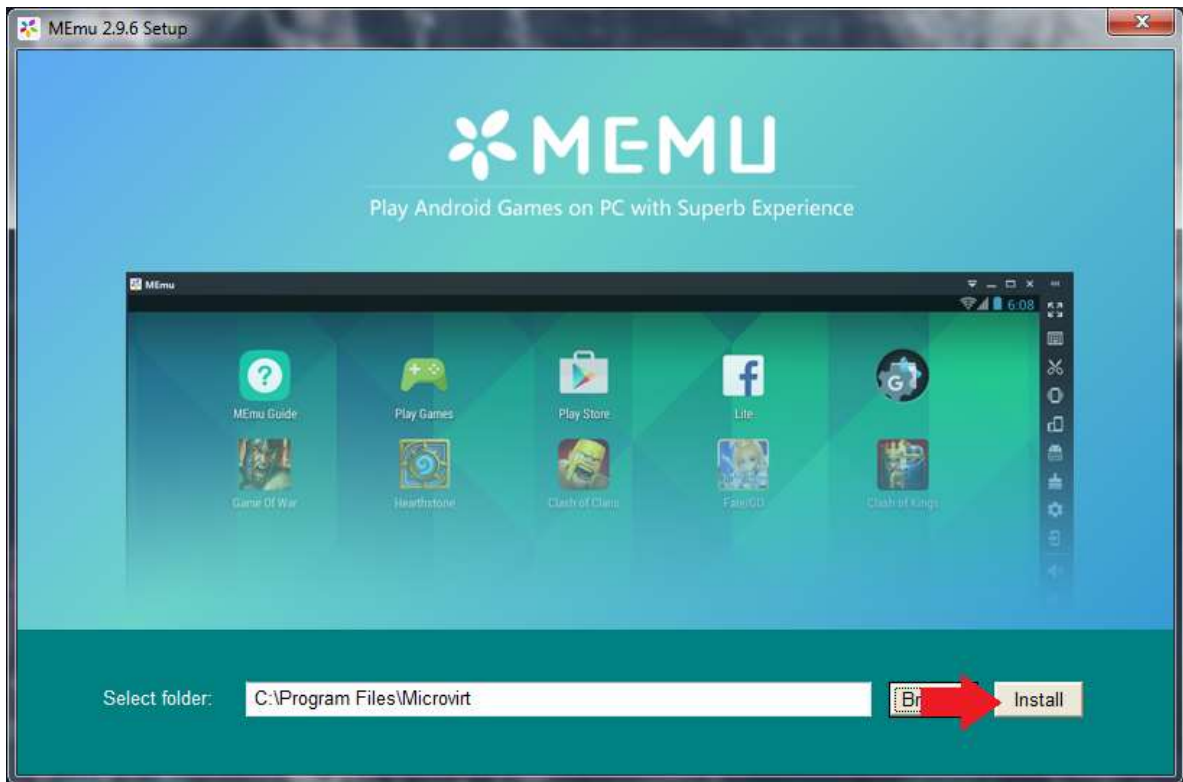
5. Click the *Install* button to start the installation.



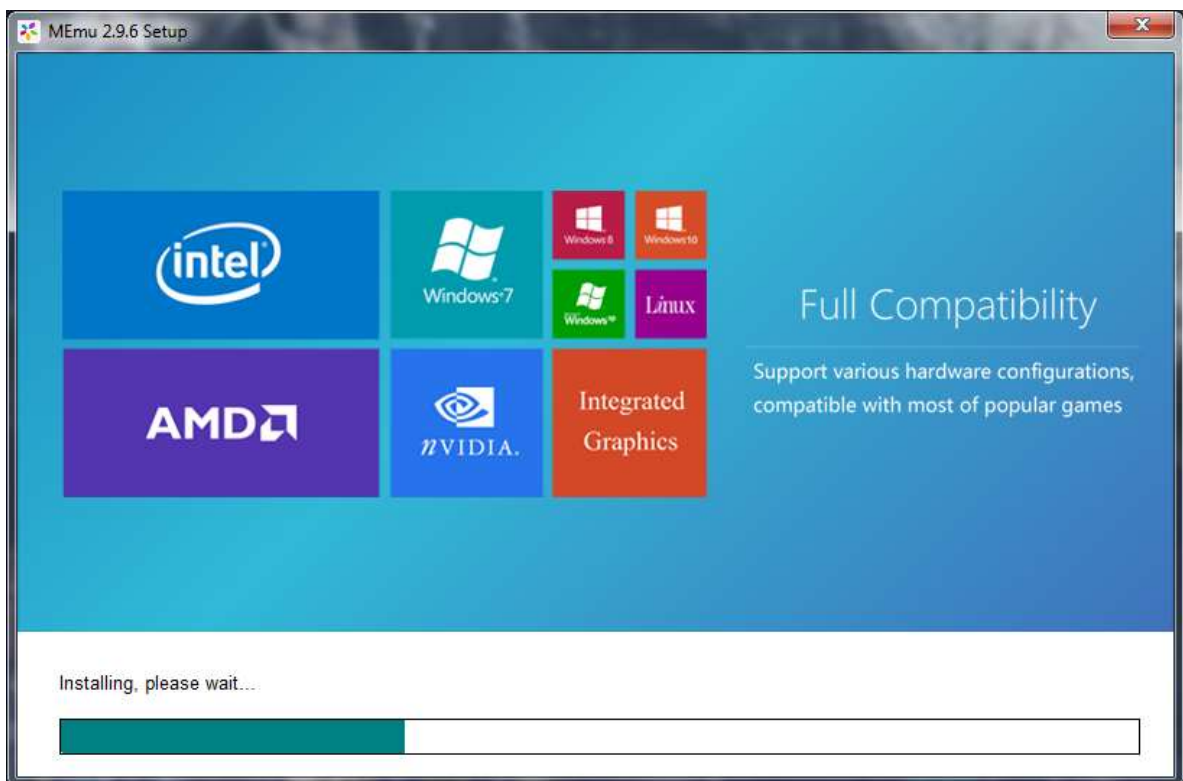
6. Wait while the files are being downloaded.



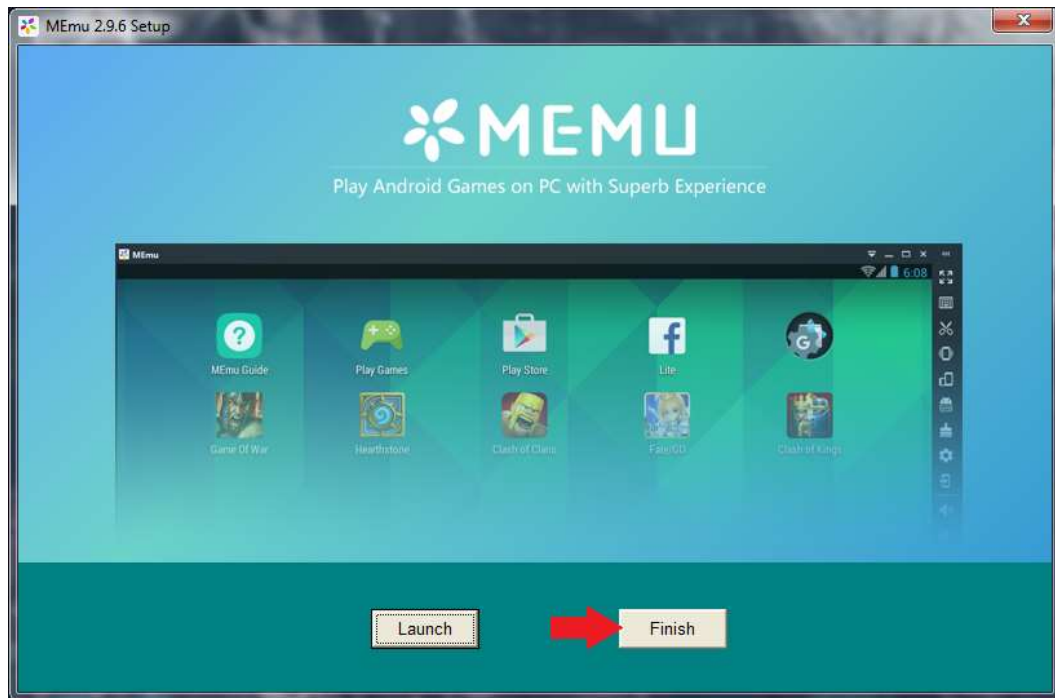
7. The setup window will open for the MEmu emulator which will run the Virtual Trainer. Select the folder you want to install the program in and click the *Install* button to continue.



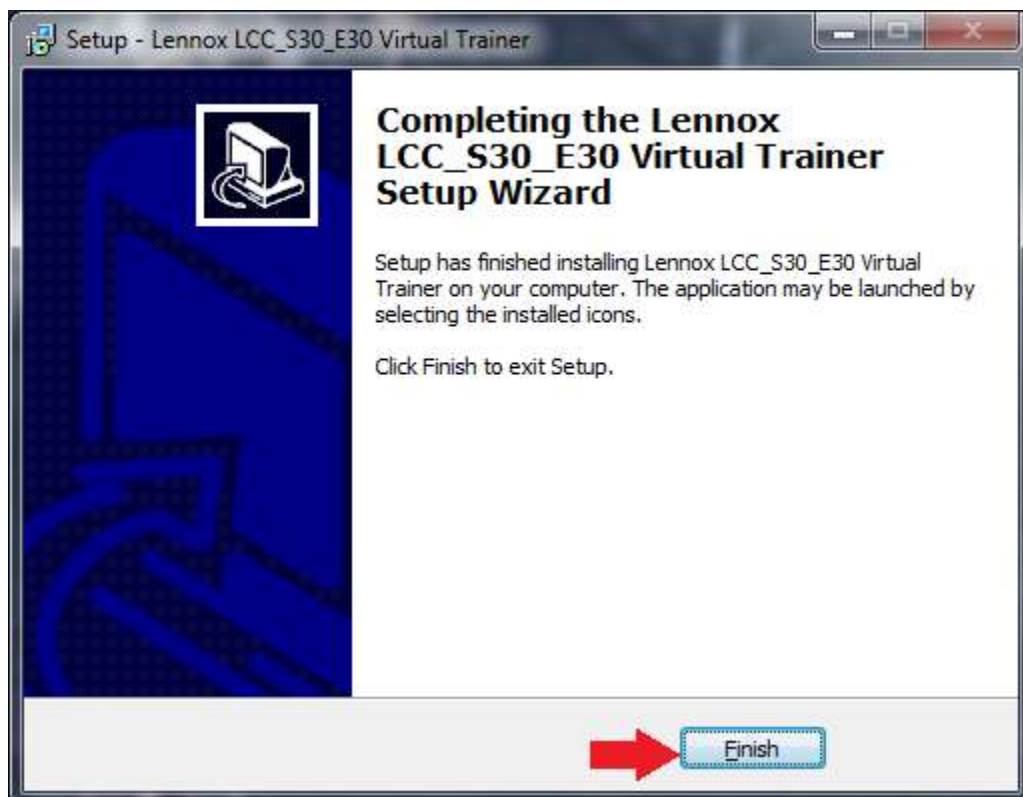
8. The following window will appear as the *MEmu* emulator is being installed.



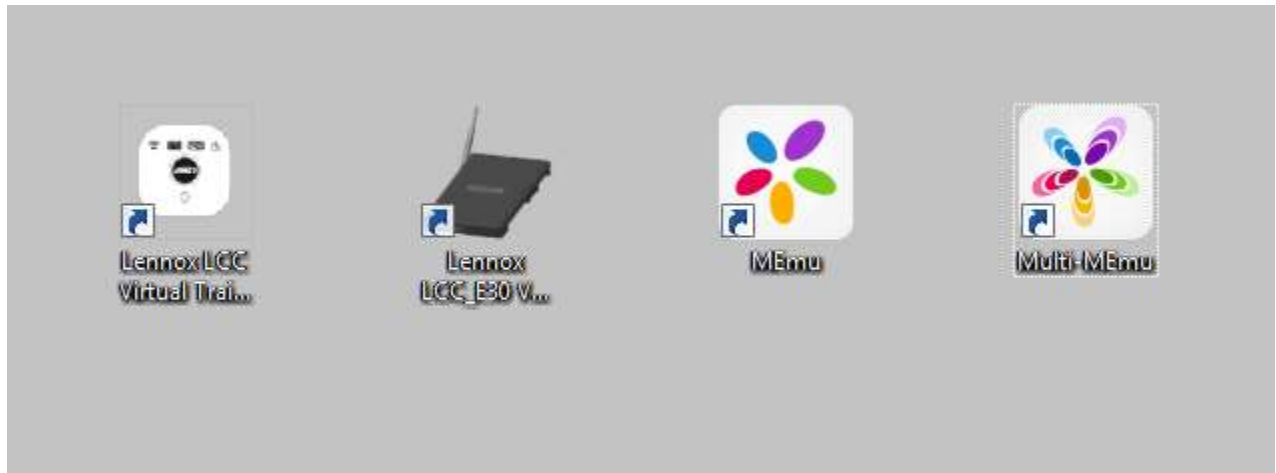
9. When the MEmu emulator has finished installing, you will see the following window. Click the *Finish* button to continue.



10. When the following window appears, the Virtual Trainer Installation process is complete. Click the *Finish* button to close the setup program.



11. The installation program created the following icons on your desktop (in no particular order).



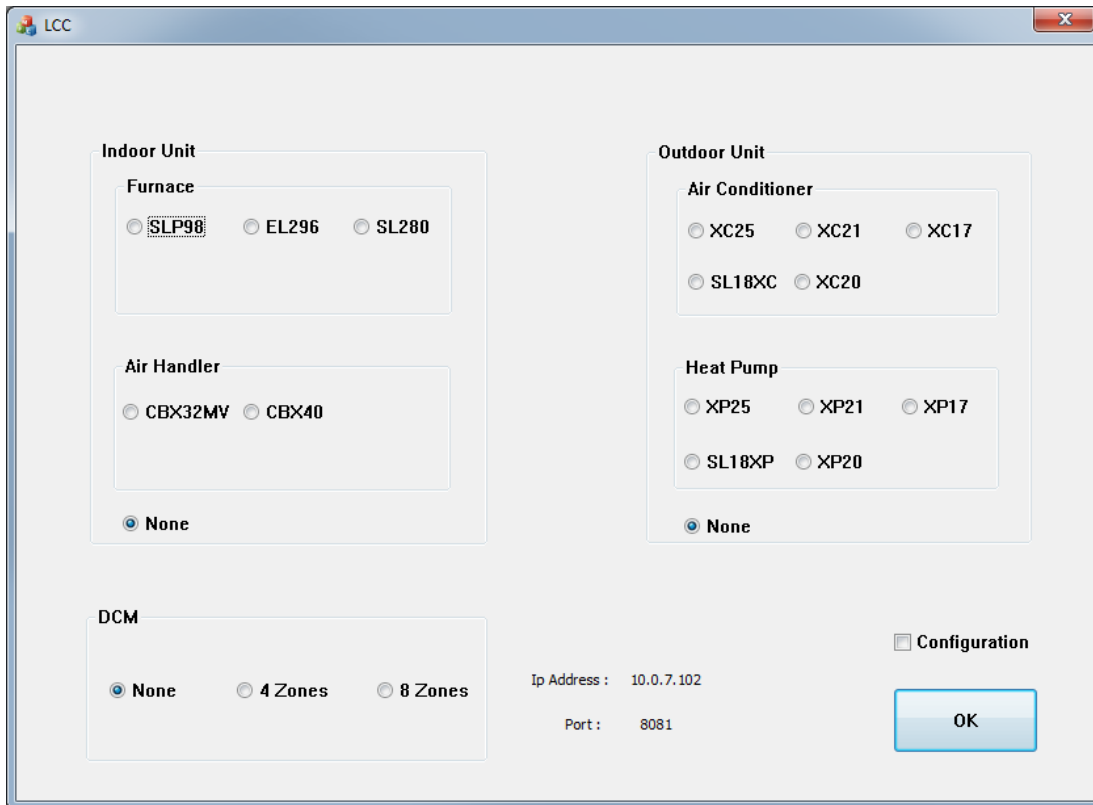
Setup Instructions

iComfort S30 Trainer Setup

1. On the desktop, double-click the iComfort S30 LCC icon:



The following window will appear.



2. At the bottom of this screen to the left of the *OK* button, the *IP Address* and *Port* settings are displayed. Make a note of these values. This address will change each time your computer connects to a different IP address and this step will need to be repeated.

3. Select the AC Equipment configuration you wish to work with. If you make any changes on this screen, it is recommended that you check the box next to *Configuration*.

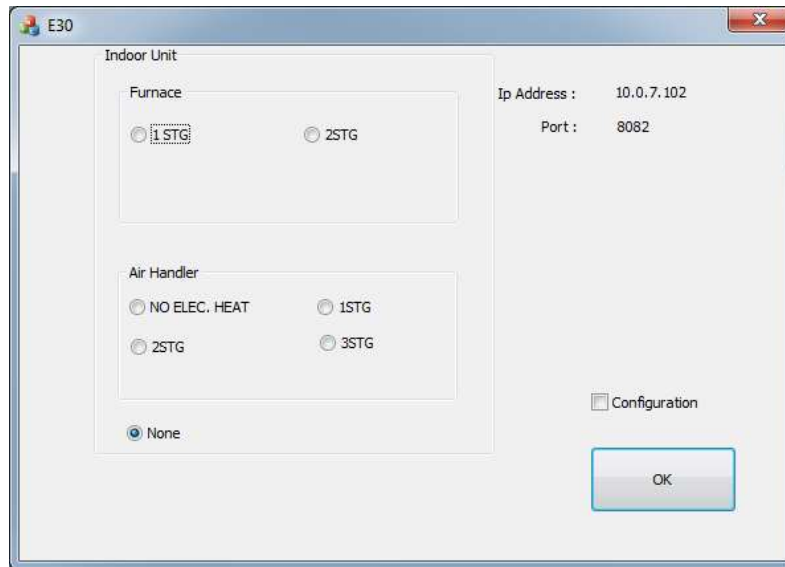
4. When the selections are correct, click the *OK* button to start the iComfort S30 LCC emulation window. Now proceed to the **Run the HD Emulation** section

iComfort E30 Trainer Setup

1. On the desktop, double-click the iComfort E30 LCC icon:



The following window will appear.



2. At the top right corner of this screen the IP Address and Port settings are displayed.

Make a note of these values. This address will change each time your computer connects to a different IP address and this step will need to be repeated.

3. Select the Indoor Equipment configuration you wish to work with. If you make any changes on this screen, it is recommended that you check the box next to *Configuration*.

4. When the selections are correct, click the *OK* button to start the iComfort E30 LCC emulation window. Now proceed to the **Run the HD Emulation** section.

Note: Only one Trainer can be run at a time

Operation Instructions

1. On the desktop, double-click the MEmu icon.



2. In the MEmu windows double-click the S30 HD display icon.



3. If the window below appears, you ready to proceed with using the virtual trainer

The screenshot shows a dark-themed window titled 'dealer info' with a close button in the top right corner. Below the title bar, there is a text prompt: 'Please enter your dealer id number and / or your dealer phone number. This number will allow your dealer information to automatically populate once connected to wi-fi.' Below this prompt are two input fields: 'dealer id number' and 'dealer phone number', separated by the text 'and/or'. The 'dealer phone number' field includes a dropdown menu with parentheses and a dash. Below these fields are three rows of input fields for 'name', 'email', and 'website', each with a corresponding 'enter' label to its right. Underneath, there are two rows of input fields for 'address 1' and 'address 2', also with 'enter' labels. At the bottom center of the window is a 'continue' button.

If the receive the following window instead of the one above, click on the *set values* tab on the left side of the window and continue to step 4.



4. On the window that appears (see below), click on the *MicroRelayServer IP* option and enter the *IP Address* you noted from step 2 ***x30 Emulation Setup***
5. On the window that appears (see below), click on the *MicroRelayServer Port* option and enter the *Port* you noted from step 2 in ***x30 Emulation Setup***
6. Click on the *Back* option.
7. Go back to Step 3 under ***Run the HD Emulation***

